

ACCURATE SOMATIC CELLS COUNTER & ULTRASONIC MILK ANALYZER IN ONE DEVICE!

Lactoscan COMBO

Fast! Accurate! Reliable!
Total milk quality control!



Switching SCC to milk analyzer

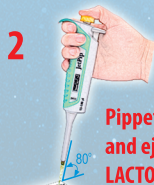


Accurate somatic cells counting in three simple steps

Milk Samples



1 Mix milk and Sofia Green dye



2 Pipette 12 µL and eject onto LACTOCHIP



3 Insert LACTOCHIP into the Somatic Cell Counter

LACTOCHIP x4
Low cost per analysis



Bar-code reader (USB)



Wireless keyboard and mouse



External Standard Printer



19" HDMI Display

Fast Autofocus

Test results within
20 to 60 seconds

Store unlimited number
of records in the database

Automatic software update
and Remote service

SPECIFICATIONS

Analysis time: < 1 minute

Capacity: > 60 tests per hour

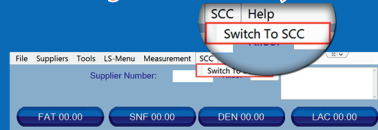
Measuring range: 10 000 to 10 000 000 cell/mL

Deviation: SCC (cell/mL) CV%

| | |
|---------|----|
| 100 000 | 5% |
| 400 000 | 3% |
| 600 000 | 2% |

- Internet Cloud Services
- e-mail & SMS support
- Multi-language support
- Touch-screen display
- Wireless keypad and mouse

Switching from milk analyzer to SCC



Platform scales
(serial interface)



In-flow integrated
pH meter with probe (option)

Inbuilt printer

7" fully functional
touch-screen tablet



Waterproof, duplicating the Touchscreen
keypad protecting the display

(option) 50 sec., 30 sec., 20 sec. measurement

HDMI

pH probe Input
(option)
RS232
interface port

Power Switch
Somatic Cell Counter

12V Input

12V Output

Power Switch
milk analyser

USB ports

SPECIFICATIONS

| Parameter | Measuring range | Accuracy |
|----------------|-----------------------------|-----------------------|
| Fat | 0,01-45% | ±0,06% |
| SNF | 3-40% | ±0,15% |
| Density | 1000-1160 kg/m ³ | ±0,3kg/m ³ |
| Protein | 2- 15% | ±0,15% |
| Lactose | 0,01-20% | ±0,2% |
| Added water | 0-70% | ±3,0% |
| Temperature | 5-40 °C | ±1°C |
| Freezing point | 0,4- -0,7°C | ±0,005°C |
| Salts | 0,4-4% | ±0,05% |
| pH | 0-14 | ±0,05% |
| Conductivity | 2-14 mS/sm | ±0,05(mS/cm) |
| Kg | 0-150 kg | ±0,025 kg |
| Total solids | 0-50% | ±0,17% |

This project is
co-funded by the
European Union



The world's
LOWEST PRICED
IMAGE FLUORESCENCE
CELL COUNTER

ENVIRONMENTAL
CONDITIONS:

Ambient air temperature
10°C - 40°C (option 43 °C)
Milk temperature: 1°C - 40°C
Relative humidity 30% - 80%

ELECTRICAL
PARAMETERS:

AC voltage: 220V / 110V
DC voltage: 12V
Power Consumption:
30W max

MECHANICAL
PARAMETERS:

Dimensions (W x D x H):
390 x 300 x 260 mm
Weight < 5.3 kg
Combined stainless
steel and plastic box

buy online on
www.lactoscan.com



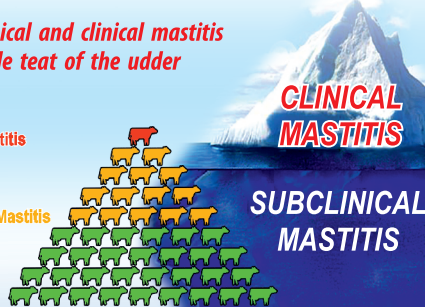
MILKOTRONIC LTD

Bulgaria, 6000 Stara Zagora
167, Tsar Simeon Veliki, A, 25
Tel: + 359 457 670 82,
Fax: + 359 457 670 83

ACCURATE SOMATIC CELLS COUNTER & ULTRASONIC MILK ANALYZER IN ONE DEVICE!

Detects subclinical and clinical mastitis
in a single test of the udder

1 Clinical Mastitis
20 - 40 Subclinical Mastitis
120 Healthy



The iceberg of mastitis

Clinical Mastitis > 400 000 cell/mL
Subclinical Mastitis 200 000 ÷ 400 000 cell/mL
Healthy < 200 000 cell/mL
Yeast mastitis

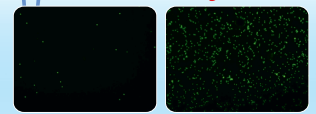
Results are color coded



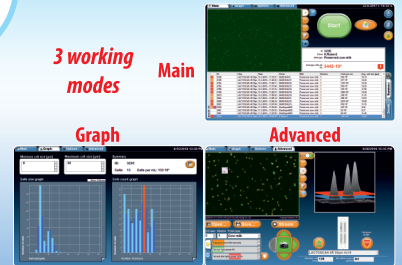
Indication of different
mastitis and pathogens



Somatic cell images



3 working
modes



LactoScan Analyser - Database (LSAN-DB)

LSAN-DB collecting information from Lactoscan® compatible measurement files and creating reports consistent with predefined formulae. The application saves data collected to a MySQL database.

Local and Cloud Based DB



Cloud Database Application. Total solution for milk collecting process.

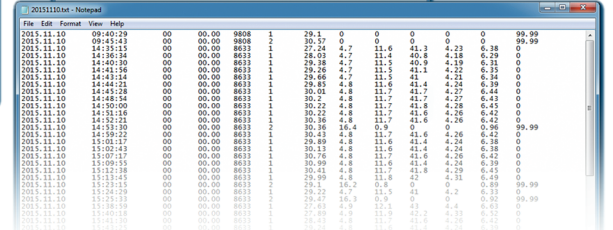
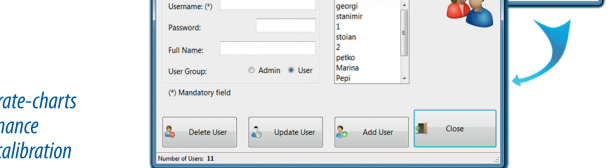
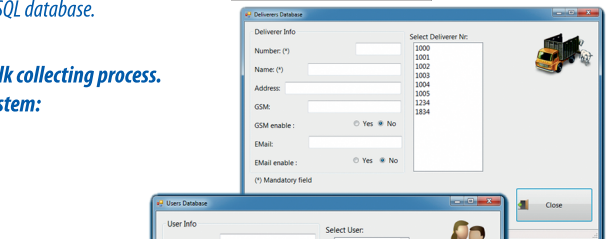
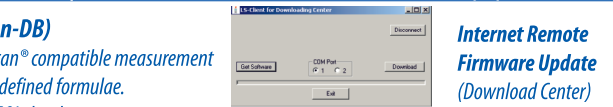
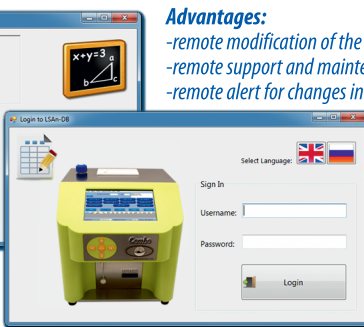
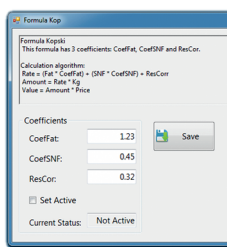
Windows tablet, wireless, cloud services based system:

- Easy to use, integrated, internet based;
- Automated farmer identification (bar-code card);
- Real-time SMS and e-mail alerts;
- Remote back-up support and maintenance, updates;
- Payment schemes calculations;
- Real-time online access to milk data;



Advantages:

- remote modification of the rate-charts
- remote support and maintenance
- remote alert for changes in calibration



Milkotronic Dairy United - Nova Zagora
Report generated: 2015-11-29 15:33:05

Report for: 2015-04-09 | Type of report: Shift / Large | Shift: Morning

| Calibration type: 2 | | | | | | | |
|----------------------|-----------|-----------------------|-------|--------------------|-------|----------------------|---------|
| Time | Deliverer | Litres | Fat | SNF | Rate | Amount | Value |
| 11:57:48 | 1001 | 1.34 | 3.97 | 22.69 | 20.12 | 26.96 | 347.26 |
| 09:57:03 | 1114 | 12.53 | 4.33 | 23.24 | 4.54 | 56.89 | 732.09 |
| 09:55:21 | 1234 | 2.41 | 4.11 | 23.92 | 5.56 | 13.90 | 179.03 |
| 09:58:23 | 1914 | 32.57 | 4.03 | 24.21 | 5.56 | 181.09 | 2332.43 |
| 09:59:30 | 2924 | 34.50 | 11.66 | 22.29 | 4.54 | 156.63 | 2017.39 |
| Average Fat: 7.23 | | Average SNF: 23.54 | | Average Rate: 0.48 | | Total Value: 5608.80 | |
| Total Amount: 435.47 | | Total Quantity: 83.44 | | | | | |
| Calibration type: 3 | | | | | | | |
| Time | Deliverer | Litres | Fat | SNF | Rate | Amount | Value |
| 11:58:12 | 1002 | 3.45 | 3.87 | 23.69 | 4.54 | 15.66 | 201.74 |
| 10:25:39 | 1234 | 10.54 | 4.22 | 24.92 | 5.56 | 58.60 | 754.80 |
| 10:45:32 | 3200 | 17.57 | 4.43 | 22.91 | 11.24 | 197.49 | 2543.63 |

Milk conductivity measuring system (option)

Milk conductivity changes depending on concentration of ions in the milk.
Milk conductivity can be used for:

- test of udder health (detection of subclinical mastitis);
- control of water evaporation grade in condense milk production;
- determination of dry milk solubility rate.

e-mail: salesdpt@lactoscan.com
Eng, Spa, Port: +359 886 841 389
e-mail: sales2@lactoscan.com
Eng, Rus: +359 886 841 395
e-mail: mainservice@lactoscan.com
Eng, Rus: +359 888 811 017

e-mail: m.mihneva@lactoscan.com
Eng: + 359 885 597 232
e-mail: milkanalyzers@lactoscan.com
Eng, Rus: +359 896 753 803

distributors: