

Automated microscope based on image cytometry with ultrafast  
precise liquid autofocus and cell counting software

MUCH MORE THAN A SIMPLE SOMATIC CELL COUNTER

# Lactoscan Somatic Cell Counter

Embedded printer

7" fully functional  
touch screen tablet

Test results within 20 to 60 seconds



**LACTOSCAN**  
SOMATIC CELLS COUNTER  
7/1/2014 10:52:28  
ID= 43D  
LACTOCHIP-QL1 50µm  
---  
Boiko  
(Other) milk, dilution factor 1  
362·10<sup>3</sup> Cells per mL



Barcode scanner -  
Easy sample data entry

Wireless keyboard  
and mouse



Fast Autofocus

LACTOCHIP x4  
Low cost per analysis

Store unlimited number of records in the database  
Automatic software update and Remote service

The world's  
**LOWEST PRICED**  
**IMAGE FLUORESCENCE**  
**CELL COUNTER**

## SPECIFICATIONS

Analysis  
time: < 1 minute

Capacity: > 60 tests per hour

Measuring  
range: 10 000 to 10 000 000 cell/mL

Deviation: SCC (cell/mL)	CV%
100 000	5%
400 000	3%
600 000	2%

New

**DETECTION OF  
YEAST MASTITIS!**

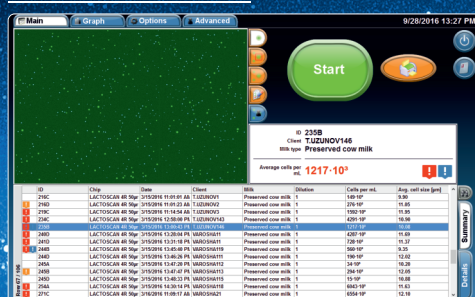
## Accurate Somatic Cell Counting in three simple steps:

- 1 Mix milk and Sofia Green dye
- 2 Pipette 8 µL and eject onto LACTOCHIP
- 3 Insert LACTOCHIP into the Somatic Cell Counter

## KEY FEATURES:

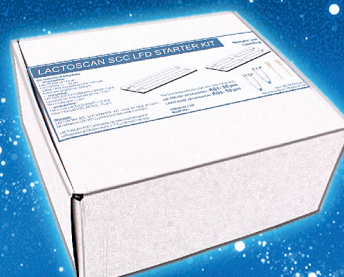
- Simple in operation
- Fast somatic cell analysis
- Accurate and reliable results
- Portable and compact design
- Low maintenance cost
- One year full warranty

## Results are color coded



- ! Clinical Mastitis > 400 000 cell/mL
- ! Subclinical Mastitis 200 000 ÷ 400 000 cell/mL
- Healthy < 200 000 cell/mL
- ! Yeast mastitis

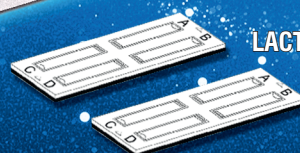
## LACTOSCAN SCC STARTER KIT



SOFIA GREEN DYE



LACTOCHIP x4



**THE WORLD'S  
LOWEST COST  
PER TEST OF IMAGE  
FLUORESCENCE  
SOMATIC  
CELLS COUNT**

This project is  
co-funded by the  
European Union



**Improve your herd's udder health**

**See with your eyes what the others don't see**

**ENVIRONMENTAL CONDITIONS:**

Ambient temperature: 10 - 40 °C  
Milk temperature: 1- 40 °C  
Relative humidity: 30 - 80 %

**ELECTRICAL PARAMETERS:**

AC voltage: 220V/110V  
DC voltage: 12V, 5A  
Power Consumption: 60W max

**MECHANICAL PARAMETERS:**

Dimensions (W x D x H):  
205 x 305 x 290 mm

Weight lower than 9.0 kg

Stainless steel cover box

buy online at  
www.lactoscan.com



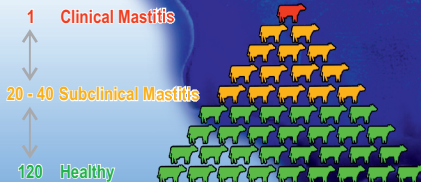
Detects subclinical and clinical mastitis in single teat of the udder

The iceberg of mastitis

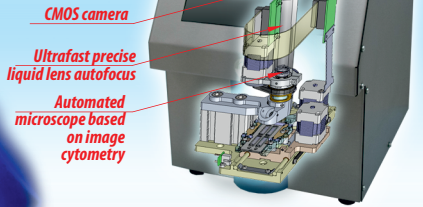


**CLINICAL MASTITIS**

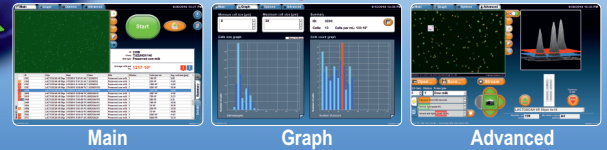
**SUBCLINICAL MASTITIS**



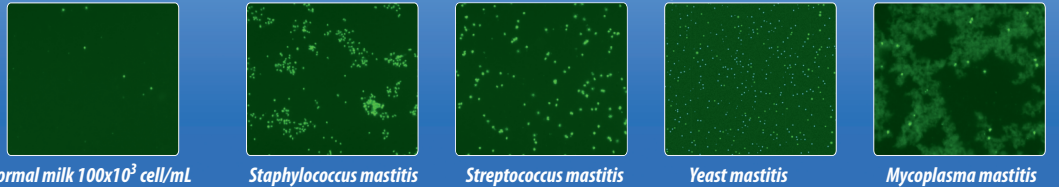
- ! Clinical Mastitis > 400 000 cell/mL
- ! Subclinical Mastitis 200 000 ÷ 400 000 cell/mL
- Healthy < 200 000 cell/mL



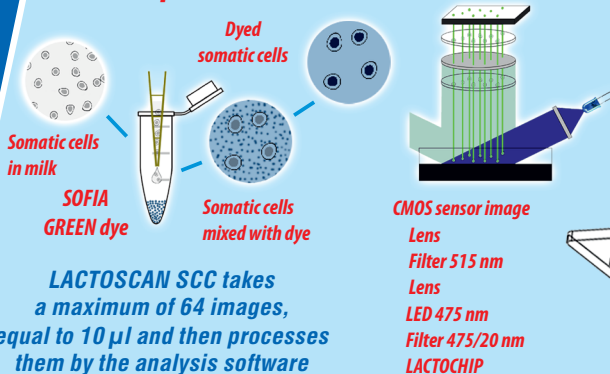
3 working modes



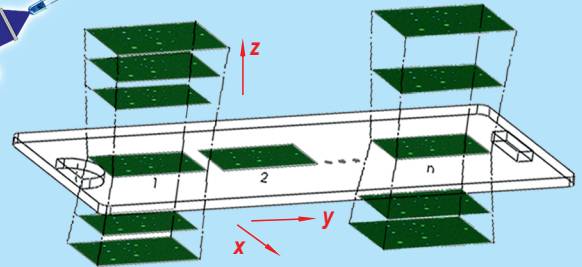
Indication of different mastitis and pathogens



**The Principle of LACTOSCAN SCC**



Unique, 3D, multi-image, patent application protected, sequential scanning process

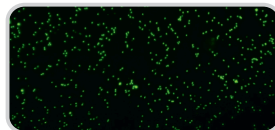


**LACTOSCAN SCC**

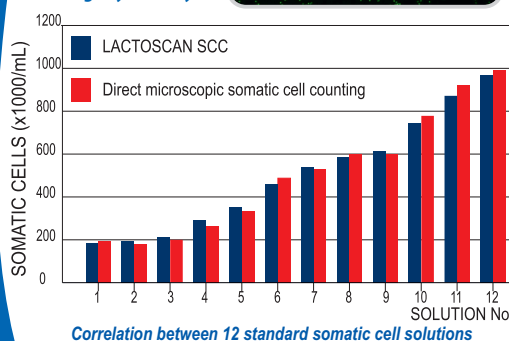
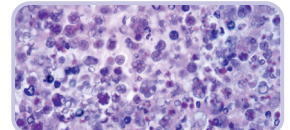
compared to

**DMSCC**

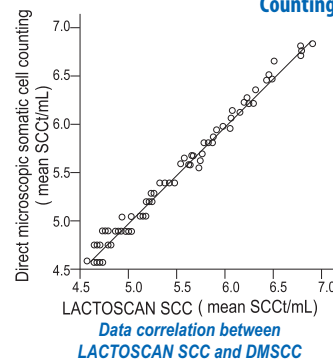
Automated microscope based on image cytometry



Direct Microscopic Somatic Cell Counting



**Image**



	LACTOSCAN SCC	DMSCC
SCC (cell/mL)	*CV %	*CV %
100 000	5 %	7 %
400 000	3 %	5 %
600 000	2 %	4 %

\* Coefficient of Variation  
Comparison of deviation