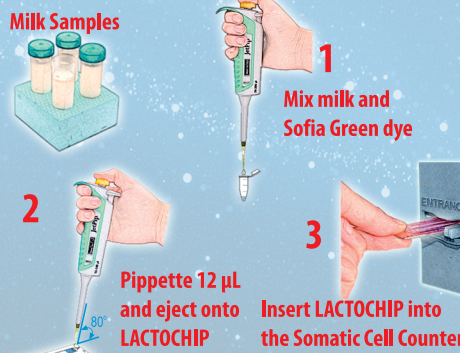


ACCURATE SOMATIC CELLS COUNTER & ULTRASONIC MILK ANALYZER IN ONE DEVICE!

Lactoscan COMBO



Accurate somatic cells counting in three simple steps



Fast! Accurate! Reliable!
Total milk quality control!

Fast Autofocus

Test results within
20 to 60 seconds

Store unlimited number
of records in the database

Automatic software update
and Remote service

SPECIFICATIONS

Analysis time: < 1 minute

Capacity: > 60 tests per hour

Measuring range: 10 000 to 10 000 000 cell/mL

Deviation: SCC (cell/mL) CV%

100 000	5%
400 000	3%
600 000	2%

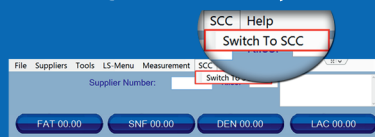
- Internet Cloud Services
- e-mail & SMS support
- Multi-language support
- Touch-screen display
- Wireless keypad and mouse

In-flow integrated pH meter with probe (option)

Inbuilt printer

10" touch screen display with Windows mini PC

Switching from milk analyzer to SCC



Platform scales (serial interface)



pH probe Input (option)
RS232 interface port
Power Switch Somatic Cell Counter

12V Input
12V Output

Power Switch milk analyser
USB ports

SPECIFICATIONS

Parameter	Measuring range	Accuracy
Fat	0,01-45%	±0,06%
SNF	3-40%	±0,15%
Density	1000-1160 kg/m ³	±0,3kg/m ³
Protein	2- 15%	±0,15%
Lactose	0,01-20%	±0,2%
Added water	0-70%	±3,0%
Temperature	5-40 °C	±1°C
Freezing point	0,4 - -0,7°C	±0,005°C
Salts	0,4-4%	±0,05%
pH	0-14	±0,05%
Conductivity	2-14 mS/sm	±0,05(mS/cm)
Kg	0-150 kg	±0,025 kg
Total solids	0-50%	±0,17%

(option) 50 sec., 30 sec., 20 sec. measurement

This project is co-funded by the European Union



The world's
LOWEST PRICED
IMAGE FLUORESCENCE
CELL COUNTER

ENVIRONMENTAL
CONDITIONS:

Ambient air temperature
10°C - 40°C (option 43 °C)
Milk temperature: 1°C - 40°C
Relative humidity 30% - 80%

ELECTRICAL
PARAMETERS:

AC voltage: 220V / 110V
DC voltage: 12V
Power Consumption:
30W max

MECHANICAL
PARAMETERS:

Dimensions (W x D x H):
295 x 330 x 360 mm
Weight < 8 kg
Stainless steel box

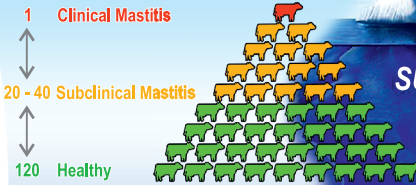
buy online on
www.lactoscan.com



MILKOTRONIC LTD
Bulgaria, 6000 Stara Zagora
167, Tsar Simeon Veliki, A, 25
Tel: + 359 457 670 82,
Fax: + 359 457 670 83
LT-Combo-2021

ACCURATE SOMATIC CELLS COUNTER & ULTRASONIC MILK ANALYZER IN ONE DEVICE!

Detects subclinical and clinical mastitis
in a single test of the udder



- Clinical Mastitis** > 400 000 cell/mL
- Subclinical Mastitis** 200 000 ÷ 400 000 cell/mL
- Healthy** < 200 000 cell/mL
- Yeast mastitis**

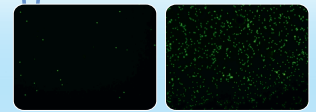
Results are color coded



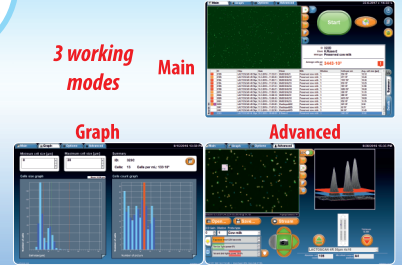
The iceberg of mastitis



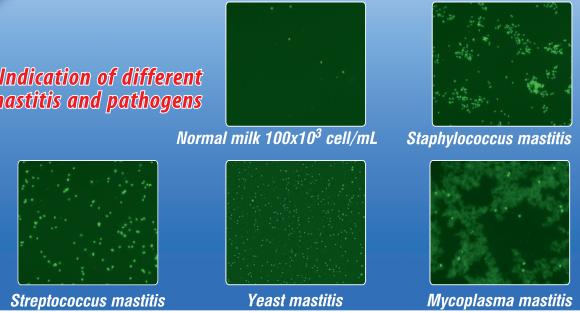
Somatic cell images



3 working modes



Indication of different
mastitis and pathogens



LactoScan Analyser - Database (LSAN-DB)

LSAN-DB collecting information from Lactoscan compatible measurement files and creating reports consistent with predefined formulae. The application saves data collected to a MySQL database.

Local and Cloud Based DB



Cloud Database Application. Total solution for milk collecting process.

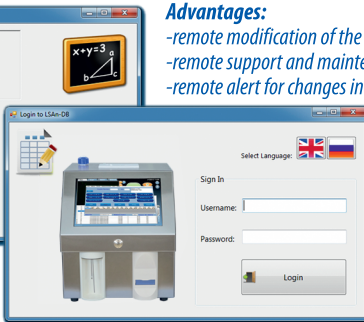
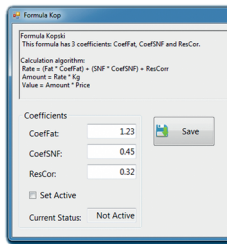
Windows tablet, wireless, cloud services based system:

- Easy to use, integrated, internet based;
- Automated farmer identification (bar-code card);
- Real-time SMS and e-mail alerts;
- Remote back-up support and maintenance, updates;
- Payment schemes calculations;
- Real-time online access to milk data;



Advantages:

- remote modification of the rate-charts
- remote support and maintenance
- remote alert for changes in calibration



Milkotronic Dairy United - Nova Zagora
Report generated: 2015-11-29 15:33:05

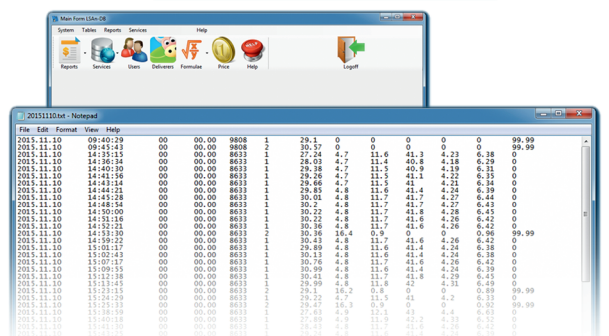
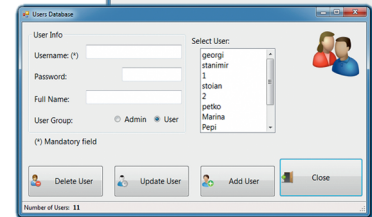
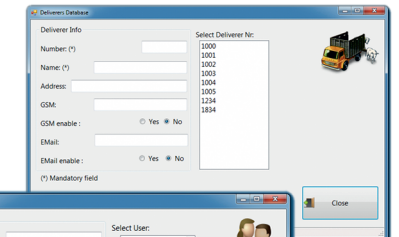
Report for: 2015-04-09 | Type of report: Shift / Large | Shift: Morning

Calibration type: 2						
Time	Deliverer	Litres	Fat	SNF	Rate	Amount
11:57:48	1001	1.34	3.97	22.69	20.12	26.96
09:57:03	1114	12.53	4.33	23.24	4.54	56.89
09:55:21	1234	2.41	4.11	23.92	5.56	13.90
09:58:23	1914	32.57	4.03	24.21	5.56	181.09
09:59:30	2924	34.50	11.66	22.29	4.54	156.63
Average Fat: 7.23		Average SNF: 23.54		Average Rate: 0.48		Total Value: 5608.80
Total Amount: 435.47 Total Quantity: 83.44						

Calibration type: 3						
Time	Deliverer	Litres	Fat	SNF	Rate	Amount
11:58:12	1002	3.45	3.87	23.69	4.54	15.66
10:25:39	1234	10.54	4.22	24.92	5.56	58.60
10:45:32	3200	17.57	4.43	22.91	11.24	197.49



Internet Remote
Firmware Update
(Download Center)



Milk conductivity measuring system (option)

Milk conductivity changes depending on concentration of ions in the milk.
Milk conductivity can be used for:

- test of udder health (detection of subclinical mastitis);
- control of water evaporation grade in condense milk production;
- determination of dry milk solubility rate.

distributors:

e-mail: salesdpt@lactoscan.com
Eng, Spa, Port: +359 886 841 389
e-mail: sales2@lactoscan.com
Eng, Rus: +359 886 841 395
e-mail: mainservice@lactoscan.com
Eng, Rus: +359 888 811 017

e-mail: Prokopiev@lactoscan.com
Eng: + 359 885 597 232
e-mail: milkanalyzers@lactoscan.com
Eng, Rus: +359 896 753 803