

Automated microscope based on image cytometry with ultrafast
precise liquid autofocus and cell counting software

MUCH MORE THAN A SIMPLE SOMATIC CELL COUNTER

Lactoscan Somatic Cell Counter A10

(ALL-IN-ONE)



Embedded printer

10" fully functional touch screen

Test results within 20 to 60 seconds

Fast Autofocus

Store unlimited number
of records in the database

Automatic software
update and Remote service

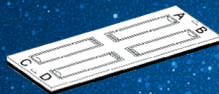
LACTOSCAN
SOMATIC CELLS COUNTER
7/1/2014 10:52:26
ID= 43D
LACTOCHIP-QL1 50µm
...
Bojke
(Other) milk, dilution factor 1
362·10³ Cells per mL

Barcode
scanner
(optional)
Easy sample
data entry

Vortex mixer



LACTOCHIP x4
Low cost per analysis



Wireless
keyboard
and mouse



The world's
LOWEST PRICED
IMAGE FLUORESCENCE
CELL COUNTER

SPECIFICATIONS

Analysis
time: < 1 minute

Capacity: > 60 tests per hour

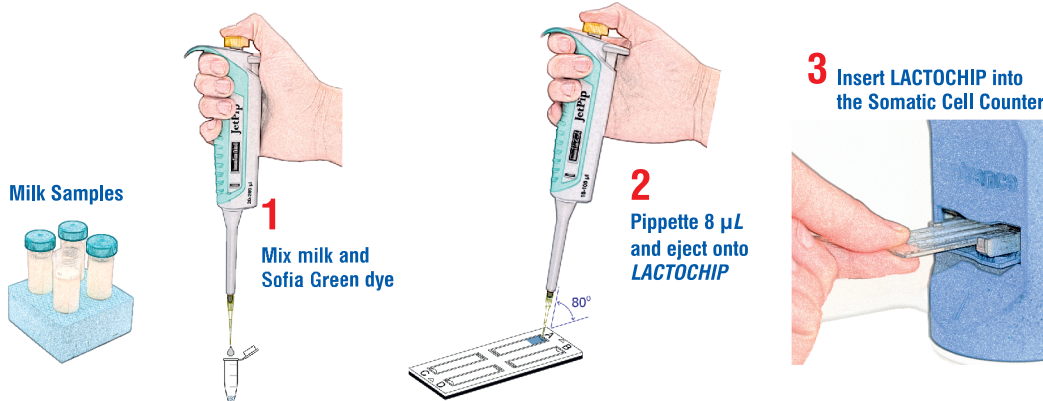
Measuring
range: 10 000 to 10 000 000 cell/mL

Deviation: SCC (cell/mL) CV%
100 000 5%
400 000 3%
600 000 2%

New

**DETECTION OF
YEAST MASTITIS!**

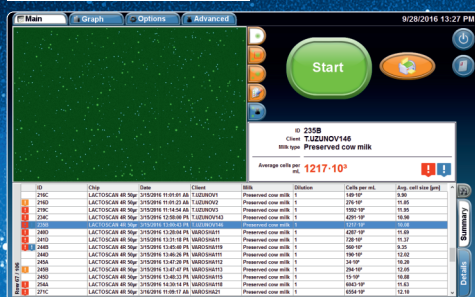
Accurate Somatic Cell Counting in three simple steps:



KEY FEATURES:

- Simple in operation
- Fast somatic cell analysis
- Accurate and reliable results
- Portable and compact design
- Low maintenance cost
- One year full warranty

Results are color coded



LACTOSCAN SCC STARTER KIT



- ! Clinical Mastitis > 400 000 cell/mL
- ! Subclinical Mastitis 200 000 ÷ 400 000 cell/mL
- Healthy < 200 000 cell/mL
- ! Yeast mastitis

**THE WORLD'S
LOWEST COST
PER TEST OF IMAGE
FLUORESCENCE
SOMATIC
CELLS COUNT**

This project is
co-funded by the
European Union



Improve your herd's udder health

See with your eyes what the others don't see

ENVIRONMENTAL CONDITIONS:

Ambient temperature: 10 - 40 °C
Milk temperature: 1- 40 °C
Relative humidity: 30 - 80 %

ELECTRICAL PARAMETERS:

AC voltage: 220V/110V
DC voltage: 12V, 5A
Power Consumption: 60W max

MECHANICAL PARAMETERS:

Dimensions (W x D x H):
295 x 330 x 360 mm

Weight lower than 8.0 kg

Stainless steel cover box

buy online at
www.lactoscan.com



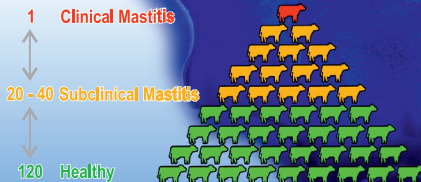
Detects subclinical and clinical mastitis in single teat of the udder



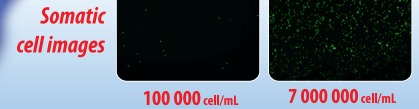
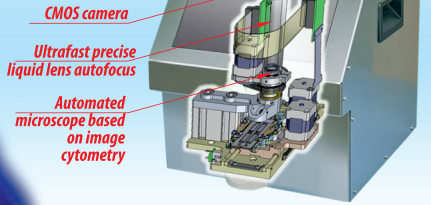
The iceberg of mastitis

CLINICAL MASTITIS

SUBCLINICAL MASTITIS



- ! Clinical Mastitis > 400 000 cell/mL
- ! Subclinical Mastitis 200 000 ÷ 400 000 cell/mL
- Healthy < 200 000 cell/mL



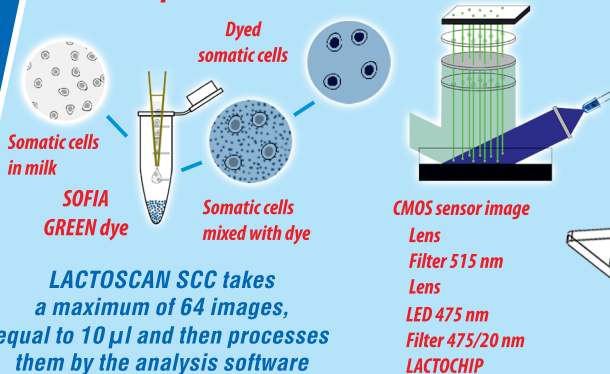
3 working modes



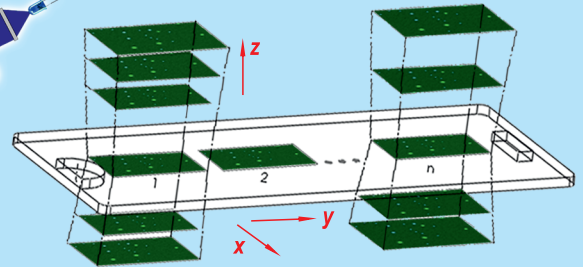
Indication of different mastitis and pathogens



The Principle of LACTOSCAN SCC



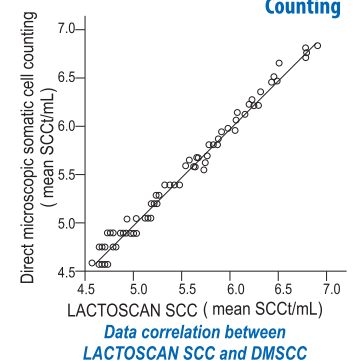
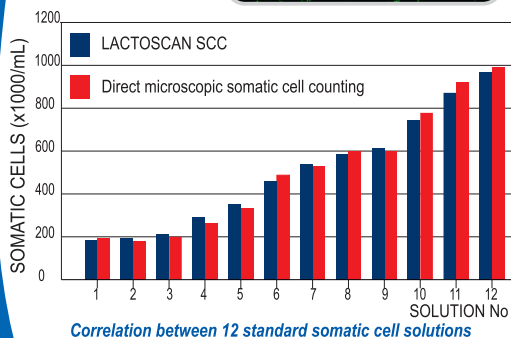
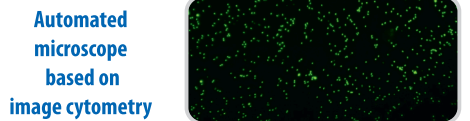
Unique, 3D, multi-image, patent application protected, sequential scanning process



LACTOSCAN SCC

compared to

DMSCC



SCC (cell/mL)	LACTOSCAN SCC *CV %	DMSCC *CV %
100 000	5 %	7 %
400 000	3 %	5 %
600 000	2 %	4 %

* Coefficient of Variation

Comparison of deviation