

# TRACEABLE® PRODUCTS CATALOGUE

"If you can't measure it accurately, you  
can't manage it efficiently..."



# Contents:

Anemometers .....	56-57
Accessories .....	79
Barometers .....	54-55
Battery Tester .....	68
Calculators.....	77-78
Calipers .....	70
Clocks.....	43-44
Conductivity .....	59-63
Counters .....	77
Desiccants/Desiccators .....	72
Dusters .....	72
Humidity.....	49-53
with Cable Probes.....	49, 51-53
Datalogging .....	49-52
Labtools .....	74-75
Laser Pointers .....	73
Light Meters.....	65-66
Manometers .....	58
Magnifiers .....	76
Measuring Meter .....	69
Multimeter.....	68
Oxygen Meters .....	64
Pens.....	75
Pressure/Vacuum Gauges .....	58
Pumps .....	68
pH Buffer .....	63
Slide Holders .....	75
Sound Meters .....	66
SpatulaBalance™ .....	70
Stopwatches .....	44-48
Tachometers.....	67
Thermometers.....	7-33
Datalogging .....	6-10
Timers .....	34-42
Wash Bottles .....	71
Wipes.....	71

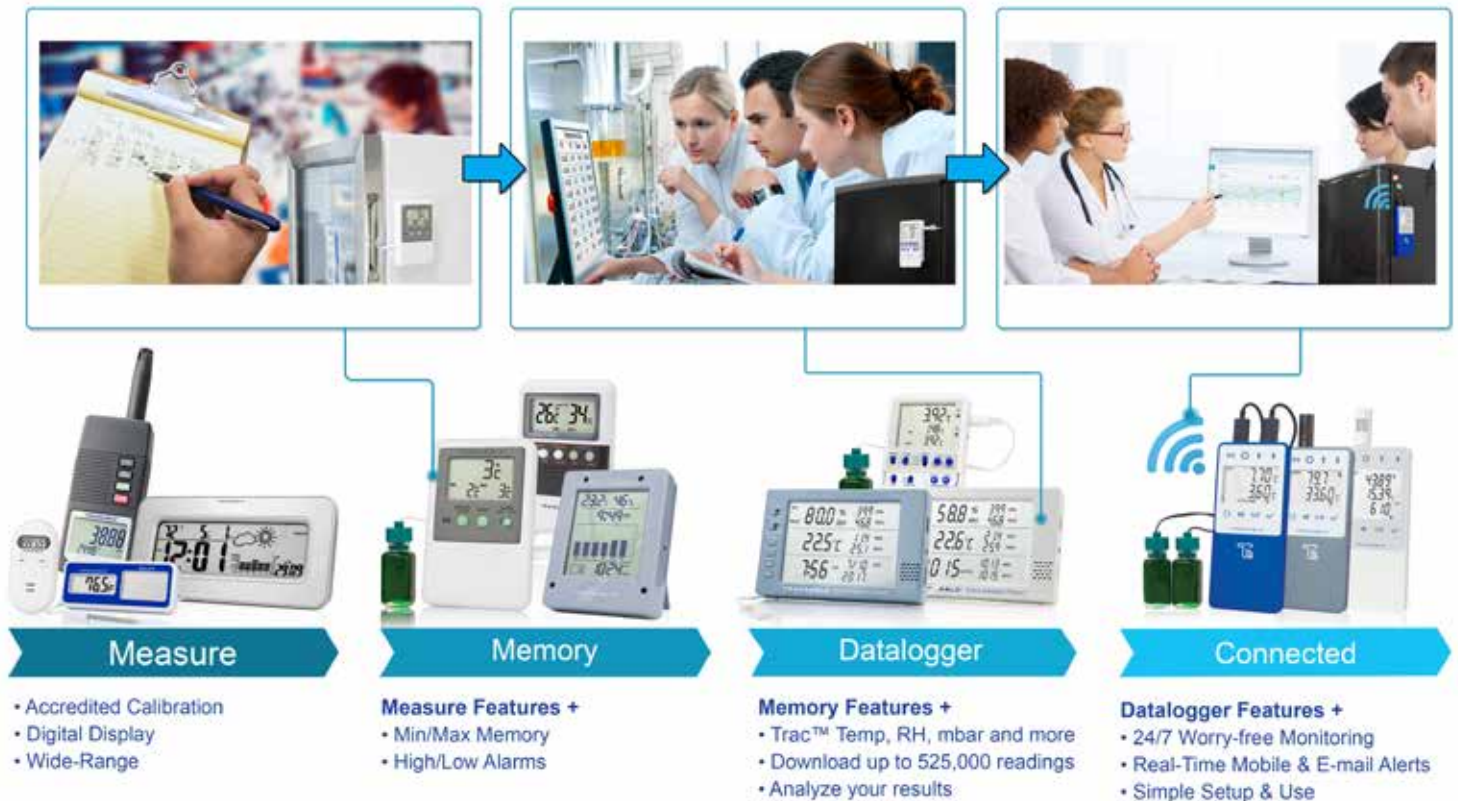
## Through A2LA Accreditation, Traceable® Certificates are internationally recognized by the following Accreditation Agencies and Services in these countries:



# Refrigerator/Freezer & Vaccine Probe Thermometer Specifications Chart

Cat. No.	Page No.	Traceable® Certificate Supplied	Range	Resolution	Accuracy	Length Probe	Cable	Battery	Alarm	Display MIN/MAX	Datalogging	Cloud Monitoring
99460-00	6	Yes	-58.00 to 158.00°F / -50.00 to 70.00°C	0.01°	±0.25°C	various	3 m	1105	yes	yes	yes	yes
94460-07	8	Yes	-58.00 to 158.00°F / -50.00 to 70.00°C	0.01°	±0.25°C	various	3 m	1105	yes	yes	yes	no
94460-37	9	Yes	-58.00 to 158.00°F / -50.00 to 70.00°C	0.01°	±0.25°C	various	3 m	1105	yes	yes	yes	no
98767-54	11	Yes	-58 to 158°F / -50 to 70°C	0.1°	±0.5°C	various	3 m	1105	yes	yes	no	no
37803-88	11	Yes	-58.00 to 158.00°F / -50.00 to 70.00°C	0.01°	±0.1°C	6.35 cm	3 m	1105	yes	yes	no	no
37804-10	11	Yes	-22 to 158°F / -30 to 70°C	0.1°	±1.0°C	6.35 cm	n/a	1105	yes	yes	no	no
94460-70	12	Yes	-58 to 158°F / -50 to 70°C	1°	±1°C	1.905 cm	3 m	1111	yes	yes	no	no
94460-72	12	Yes	-58 to 158°F / -50 to 70°C	1°	±1°C	6.35 cm	3 m	1111	yes	yes	no	no
94460-92	12	Yes	-58.00 to 158.00°F / -50.00 to 70.00°C	0.01°	±0.3°C	6.35 cm	3 m (2)	1111	yes	yes	no	no
94460-56	12	Yes	-22 to 122°F / -30 to 50°C	0.1°	±1.0°C	6.35 cm	n/a	1039	no	yes	no	no
94460-81	13	Yes	-58 to 158°F / -50 to 70°C	0.1°	±1°C	1.905 cm	3 m	1105	yes	yes	no	no
94460-74	13	Yes	-58 to 158°F / -50 to 70°C	0.1°	±0.5°C	6.35 cm	3 m	1105	yes	yes	no	no
94460-82	13	Yes	-58 to 158°F / -50 to 70°C	0.1°	±1°C	6.35 cm	3 m	1105	yes	yes	no	no
37803-84	13	Yes	-22 to 158°F / -30 to 70°C	0.1°	±0.6°C	6.35 cm	2 m	1111	yes	yes	yes	no
37803-85	13	Yes	-22 to 158°F / -30 to 70°C	0.1°	±0.6°C	2.54 cm	2 m	1111	yes	yes	yes	no
94460-78	14	Yes	-58 to 158°F / -50 to 70°C	0.1°	±1°C	1.905 cm	3 m	1111/1105	yes	yes	no	no
94460-77	14	Yes	-50 to 70°C	1°	±1°C	1.905 cm	3 m	1039	no	yes	no	no
94460-62	14	Yes	-58 to 158°F / -50 to 70°C	0.1°	±1.0°C	6.35 cm	1 m	1105	yes	yes	no	no
90002-01	15	Yes	-40 to 176°F / -40 to 80°C	0.1°	±1.5°C	3.81 cm	1.8 m	1105	no	yes	no	no

## Evolving from Measuring to Monitoring



### Traceable™ Certificate

To assure accuracy an individually-numbered Traceable™ Certificate which assures accuracy from an ISO/IEC 17025:2005 (1750.01) calibration laboratory accredited by A2LA. It indicates traceability of measurements to the SI units through NIST or other recognized national measurement institutes (NMI) that are signatories to the CIPM Mutual Recognition Agreement.



TraceableLIVE® cloud-based system monitors your **CRITICAL ENVIRONMENTS** and lets you know if anything goes wrong by sending you a Text, E-mail, or Push Alert.

When you can't be there, TraceableLIVE® **ALERTS YOU** via your smartphone, tablet, or computer at any time, anywhere...

**Once the setup is complete you can:**

- Set alarm parameters on device remotely
- View current conditions anywhere
- Generate data reports in real time
- Assign user access for the whole team



**TraceableLIVE® Subscription Cost through [traceablelive.com](http://traceablelive.com)**

# of devices	Monthly	Annually	SMS (Text)-Add on
1-9 devices	\$8.99/device	\$100/device	+\$2 per device/month
10+ devices	\$7.20/device	\$80/device	+\$2 per device/month



# Monitoring Made Easy with Real-time Text, E-mail and Push Alerts

Get Connected • Get Notified • Get TraceableLIVE®

## TraceableLIVE® provides simple, digital monitoring of

Refrigerator/Freezers • ULT Freezers • Vaccines • Chemical Storerooms • Liquid Nitrogen Storage  
• Controlled Warehouses



## TraceableLIVE® Wi-Fi Connected Digital Datalogger Thermometers with Real-Time Alerts

- Monitor locally or remotely temperature and more—connects to existing Wi-Fi
- Alerts: temperature alarm, connectivity interruption, low battery, °F/°C switchable
- Cloud-based applications—no local software required; web, Android, iOS data visibility
- Receive MOBILE PUSH / E-MAIL / TEXT notifications
- To access data and remote notifications require TraceableLIVE® subscription
- Continuous data transmission & monitoring using SSL-encrypted SECURE connection
- Unlimited scalability—use TraceableLIVE® in individual labs or an entire network of facilities
- Multiple point accredited temperature calibration—traceable to NIST
- Supplied: Quick Start Guide, batteries, magnets, Velcro®, wall mount, Traceable® Certificate

### Traceable™ Certificate

To assure accuracy an individually-numbered Traceable™ Certificate which assures accuracy from an ISO/IEC 17025:2005 (1750.01) calibration laboratory accredited by A2LA. It indicates traceability of measurements to the SI units through NIST or other recognized national measurement institutes (NMI) that are signatories to the CIPM Mutual Recognition Agreement.



99460-00

99460-05

## TraceableLIVE® Wi-Fi Refrigerator/Freezer Datalogging Thermometers

Ideal for monitoring temperatures or critical samples and reagents in refrigerators & freezers

- Meets current CDC requirements and additional recommendations for vaccine storage and monitoring
- Multiple point accredited temperature calibration (–40°C, 0°C, 50°C)—traceable to NIST

Cat. No.	Range	Accuracy	Resolution	Probes
99460-00				2 Bottles (patented)
99460-05	–50.00 to 60.00°C (–58.00 to 140.00°F)	±0.25°C	0.01°	1 Bottle & 1 Bullet™
99460-10				2 Bullets™
99460-15				2 Stainless-steel



18000-27

18000-28

## TraceableLIVE® Wi-Fi Ultra-Low Datalogging Thermometers

Designed for ULT freezers—monitor temperatures below –80°C ensuring critical samples are not compromised

- Ideal for monitoring ultra-low temperature freezers
- Multiple point accredited temperature calibration (–80°C, –40°C, 0°C, 100°C)—traceable to NIST

Cat. No.	Range	Accuracy	Resolution	Probes
18000-27	–90.00 to 105.00°C (–130.00 to 221.00°F)	±0.1°C	0.01°	1 Platinum RTD sensor, Stainless-steel 316 probe
18000-28				2 Platinum RTD sensors, Stainless-steel 316 probes



18001-08

18001-09

## TraceableLIVE® Wi-Fi LN2 Datalogging Thermometers

Best for monitoring temperatures in liquid nitrogen storage dewars—receive notifications for temperatures down to –200°C

- Ideal for monitoring long term sensitive, irreplaceable biologicals
- Multiple point accredited temperature calibration (–196°C, –80°C, 0°C and 100°C)—traceable to NIST

Cat. No.	Range	Accuracy	Resolution	Probes
18001-08	–200.00 to 105.00°C (–328.00 to 221.00°F)	±0.25°C	0.01°	1 Platinum RTD sensor, Stainless-steel 316 probe
18001-09				2 Platinum RTD sensors, Stainless-steel 316 probes

## TraceableLIVE® Wi-Fi Datalogging Hygrometers/Thermometers

Ideal for monitoring humidity and temperatures in controlled storage laboratories, warehouses, storerooms, and environmental chambers

- Ambient probe and external cable probe units available
- Alerts: humidity, temperature, connectivity interruption, and low battery

Cat. No.	Parameters	Range	Accuracy	Resolution	Probes
18000-29	Humidity	0.0 to 100%RH (non-condensing)	±3% (20 to 80% RH), ±5% otherwise	0.1% RH	1 ambient dongle sensor
18000-30	Temperature	0.00 to 55.00°C (32.00 to 131.00°F)	±0.4°C	0.01°	1 cable probe sensor



18000-29

18000-30

## TraceableLIVE® Wi-Fi Datalogging Barometer

Designed to monitor plants, blood gases or any environment where barometric pressure conditions are critical

- Place entire unit inside an environment
- Alerts: barometric pressure, temperature, humidity, connectivity interruption, and low battery

Cat. No.	Parameters	Range	Accuracy	Resolution	Probes
18000-33	Barometric Pressure	500 to 1100 millibars (mb)	±4 mbar	1 mbar	1 ambient dongle sensor
	Temperature	0.00 to 55.00°C (32.00 to 131.00°F)	±0.4°C	0.01°	
	Humidity	0 to 100% RH (non-condensing)	±3% RH (5-75%), otherwise ±5% RH	0.01% RH	



18000-33

## TraceableLIVE® Wi-Fi Datalogging CO<sub>2</sub> Meter

Best for monitoring CO<sub>2</sub>, temperature and humidity in greenhouses, micro labs, biofuel research and other environments

- Ambient unit with dongle—place entire unit inside a greenhouse or other environments
- Alerts: CO<sub>2</sub>, temperature, humidity, connectivity interruption, and low battery

Cat. No.	Parameters	Range	Accuracy	Resolution	Probes
18000-31	CO <sub>2</sub>	0 to 10,000 ppm	4% reading + 100 ppm	1 ppm	1 ambient Dongle sensor; 1 remote sensor 1 metre cable
	Temperature	0.00 to 50.00°C (32.00 to 122.00°F)	± 0.4°C	0.01°	
	Humidity	0.00 to 95.00% (non-condensing)	±3% RH (5 to 75%) otherwise ±5% RH	0.01% RH	
18000-32	CO <sub>2</sub>	0.00 to 20.00%	4% reading + 1% full scale	0.01%	1 ambient Dongle sensor; 1 remote sensor 1 metre cable
	Temperature	0.00 to 50.00°C (32.00 to 122.00°F)	± 0.4°C	0.01°	
	Humidity	0.00 to 95.00% (non-condensing)	±3% RH (5 to 75%) otherwise ±5% RH	0.01% RH	



18000-32

18000-31

### Traceable™ Certificate

To assure accuracy an individually-numbered Traceable™ Certificate which assures accuracy from an ISO/IEC 17025:2005 (1750.01) calibration laboratory accredited by A2LA. It indicates traceability of measurements to the SI units through NIST or other recognized national measurement institutes (NMI) that are signatories to the CIPM Mutual Recognition Agreement.



Bottle Probe    Bullet™ Probe    Vaccine Probe    Plastic Bottle Probe



Platinum RTD sensors, Stainless-steel 316 Probe



98768-57

## Traceable® Excursion-Trac™ Datalogging Refrigerator/Freezer Thermometers

### Datalogging thermometer with user-defined time intervals

- User-defined time intervals, MIN/MAX and current conditions displayed on LCD, and °F/°C switchable
- Stores up to 10 unique alarm events
- Meets current CDC requirements for vaccine storage and monitoring
- Rolling memory structure, maintains most recent 525,600 temperature observations
- Hassle-free retrieval of data—unit can remain in use while downloading/analyzing data
- Recorded data (CSV file) may be transferred from thermometer to PC or Mac using a USB flash drive—no additional software needed
- Smart-Alarm™ features a visual/audible alarm that continues to alarm even if the unit returns to non-alarm conditions
- 98768-53 and 98768-54 are ideal for monitoring ultra-low temperature freezers and include a PTFE cable
- Status indicators—low battery, memory full, USB data transfer, active alarm state
- Supplied: stand, Velcro®, magnetic strips, wall mount, batteries, Traceable® Certificate

Cat. No.	Temperature Range	Resolution	Accuracy	Probe			
94460-07	-50.00 to 70.00°C (-58.00 to 158.00°F)	0.01°	±0.25°C	1 bottle (patented)			
94460-09				2 bottles (patented)			
94460-11				1 Bullet™			
94460-14				2 Bullets™			
94460-18				1 bottle & 1 Bullet™			
94460-16				1 stainless-steel			
94460-17				2 stainless-steel			
98767-63				1 vaccine bottle (5ml)			
98767-64				2 vaccine bottles (5ml)			
98767-67				1 plastic bottle			
98767-68				2 plastic bottles			
98768-53				-90.00 to 105.00°C (-130.00 to 221.00°F)	0.01°	±0.2°C	Platinum RTD sensors, 1 stainless-steel 316 Probe
98768-54					0.01°	±0.2°C	Platinum RTD sensors, 2 stainless-steel 316 Probes

## Traceable® LN2 Thermometer

### Datalogging thermometer with user-defined time intervals

- Best for monitoring your cryo needs for sensitive biologicals
- Hassle-free retrieval of data—unit can remain in use while downloading/analyzing data
- Recorded data (CSV file) may be transferred from thermometer to PC or Mac using a USB flash drive—no additional software needed
- Smart-Alarm™ features a visual/audible alarm that continues to alarm even if the unit returns to non-alarm conditions
- Durable platinum RTD sensor, 316 stainless-steel 316 with 3 m cable
- Multiple calibration points (-196°C, -80°C, 0°C and 100°C)

Cat. No.	Temperature Range	Resolution	Accuracy	Data Overwrite	Memory	Probe
<b>Excursion-Trac™</b>						
98768-57	-200.00 to 105.00°C (-328.00 to 221.00°F)	0.01°	±0.25°C	Yes	525,600 data points	Platinum RTD sensors, 1 stainless-steel
98768-58						Platinum RTD sensors, 2 stainless-steel
<b>Memory-Loc™</b>						
98768-59	-200.00 to 105.00°C (-328.00 to 221.00°F)	0.01°	±0.25°C	No	1,051,200 data points	Platinum RTD sensors, 1 stainless-steel
98768-60						Platinum RTD sensors, 2 stainless-steel



# Traceable® Memory-Loc™ Datalogging Refrigerator/Freezer Thermometers

## Datalogging thermometer that can be used in 21 CFR 11 environments

- User-defined time intervals, MIN/MAX and current conditions displayed on LCD, and °F/°C switchable
- Meets current CDC requirements and additional recommendations for vaccine storage and monitoring
- Use in 21 CFR 11 environments, raw data is locked and may not be cleared/changed on base unit
- User-defined logging interval from one observation/minute to one observation/24 hours
- Capable of storing over 1 million temperature readings
- Stores up to 10 unique alarm events
- Recorded data (CSV file) may be transferred from thermometer to PC or Mac using a USB flash drive—no additional software needed
- Hassle-free retrieval of data—unit can remain in use while downloading/analysing data
- Smart-Alarm™ features a visual/audible alarm that continues to alarm even if the unit returns to non-alarm conditions
- 6428 and 6429 are ideal for monitoring ultra-low temperature freezers and include a PTFE cable
- Status indicators—low battery, low memory, USB data transfer, active alarm state
- Supplied: stand, Velcro®, magnetic strips, wall mount, batteries, Traceable® Certificate



Cat. No.	Range	Resolution	Accuracy	Probe
94460-37	-50.00 to 70.00°C (-58.00 to 158.00°F)	0.01°	±0.25°C	1 bottle (patented)
94460-39				2 bottles (patented)
94460-41				1 Bullet™
94460-43				2 Bullets™
94460-47				1 bottle & 1 Bullet™
94460-44				1 stainless-steel
94460-46				2 stainless-steel
98767-65				1 vaccine bottle (5ml)
98767-66				2 vaccine bottles (5ml)
98768-55				-90.00 to 80.00°C (-130.00 to 176.00°F)
98768-56	0.01°	±0.2°C	Platinum RTD sensors, 2 stainless-steel 316 Probes	



### Temperature-buffered glycol bottle probe mimics solution

Bottle and solution insulate sensor from rapid changes, as an example, when a refrigerator door is opened. Solution mimics temperature of stored samples.

### Glycol-filled plastic bottles now available for the food industry

### Sealed probe with non-toxic glycol

Mercury-free, solid-state probe eliminates possibility of refrigerator contamination. Probe is sealed in a miniature bottle (2.5 x 6.4 cm) filled with nontoxic glycol. Solution is GRAS (generally recognized as safe) by the FDA (Food and Drug Administration).

#### Traceable™ Certificate

To assure accuracy an individually-numbered Traceable™ Certificate which assures accuracy from an ISO/IEC 17025:2005 (1750.01) calibration laboratory accredited by A2LA. It indicates traceability of measurements to the SI units through NIST or other recognized national measurement institutes (NMI) that are signatories to the CIPM Mutual Recognition Agreement.

## Traceable® Certificate assures accurate lab tests

All Traceable® products are provided with a Traceable® Calibration Certificate from an ISO 17025 calibration laboratory and ISO Guide 34 Certified Reference Material Producer. Timer, thermometer, hygrometer, barometer, scale, balance, conductivity cell, conductivity solution, conductivity meter, pH solution, salinity meter, and caliper certificates are accredited by the American Association for Laboratory Accreditation (A2LA).

Accredited by A2LA (The American Association for Laboratory Accreditation) dedicated to "one test accepted everywhere, one accreditation accepted everywhere".

A2LA is your assurance of internationally recognized technical laboratory competence. A2LA is a signatory of the ILAC/MRA.

Displays catalog number for complete product reference

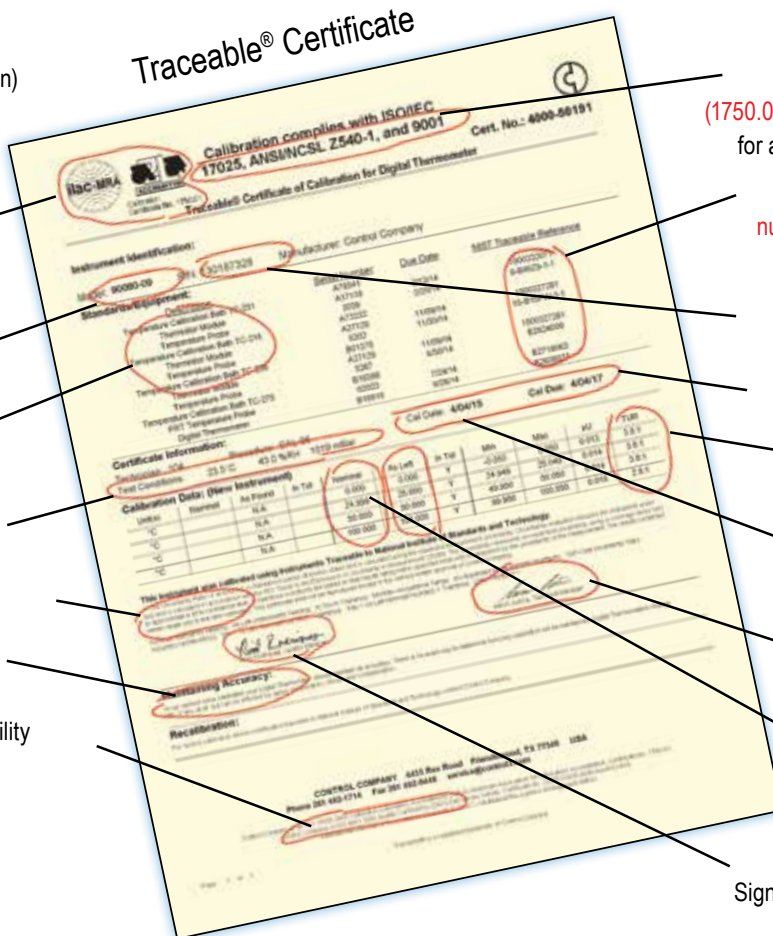
Calls out the test equipment used for calibration

Reports environmental conditions at the time of measurement

Spells out uncertainty confidence level

Lists specific conditions that may affect product accuracy

Supplied from our ISO 9001 quality facility certified by DNV



Conforms to universally recognized ISO/IEC 17025 (1750.01) Standard, a requirement for any ISO 9001 quality facility

Establishes with reference numbers the unbroken chain of traceability to NIST

Displays serial number for total product identification

Indicates Calibration Due Date

Spells out test uncertainty ratio

Specifies Calibration Date when the unit was tested

Signed by the Technical Manager

Provides measurement test results for your specific unit

Signed by the Quality Manager



## Mini-Logger-Trac™ Temperature Datalogger

### Perfect for monitoring material during transportation

- Individual Logger-Trac™ Thermometers are pre-programmed with alarm values of 2°C (low) and 8°C (high) and a recording interval to allow for 30 days of recording (readings are logged every 5 minutes, 33 seconds)
- Displays cumulative Alarm Duration from user selected High/Low values
- Reusable/Re-programmable, storage capacity: 7,680 readings
- Integrates with MaxiThermal Software for complete data analysis
- Water-resistant design (IP66) eliminates concerns when located in damp environments

Cat. No.	Range	Resolution	Accuracy
98767-69	-31.0 to 122.0°F (-35.0 to 50.0°C)	0.1°	±0.2°C from 0 to 10°C; ±1°C otherwise
<b>Accessories</b>			
98767-70	Mini-Logger-Trac™ Temperature Cradle/Cable		
18005-04	MaxiThermal Software		

## Traceable® Refrigerator/Freezer Ultra™ Thermometers

### Temperature-buffered bottle insulates sensor from rapid changes

- Smart-Alarm™: visual/audible alarm that continues to alarm even if unit returns to non-alarm conditions
- Triple display simultaneously shows MIN/MAX and current temperatures, °F/°C switchable
- Monitors minimum/maximum readings overnight, on weekends, or for any time period—a significant advantage over current read-only temperatures
- Alarm is programmable in 0.1° increments—alerts user when temperature rises above/falls below a set point
- Supplied: battery, Velcro®, magnetic strips, 3 m cable, Traceable® Certificate



98767-54



Glycol-filled Bottle Probe

Bullet™ Probe

Vaccine Probe

Glycol-filled Plastic Bottle Probe

Cat. No.	Range	Resolution	Accuracy	Probe
98767-54	-58.0 to 158.0°F (-50.0 to 70.0°C)	0.1°	±0.5°C between -30 to 50°C, otherwise ±1°C	1 bottle (patented)
98767-55				2 bottles (patented)
98767-56				1 Bullet™ (4.75 mm diameter and 1.9 cm long)
98767-57				2 Bullets™ (4.75 mm diameter and 1.9 cm long)
98767-58				1 bottle & 1 Bullet™
98767-59				1 vaccine bottle
98767-60				2 vaccine bottles
98767-61				1 plastic bottle
98767-62	2 plastic bottles			

## Traceable® Radio-Signal Refrigerator Thermometer

### Captures temperature data with high-efficiency wireless technology

- Unit wirelessly reads refrigerator temperatures from 30.5 m away, place remote module inside refrigerator
- Minimum/maximum memory allows monitoring conditions over any time period, °F/°C switchable
- Distinctive alarm sounds when temperature rises above or falls below set points
- Readings from up to 3 remote sensors are sent to main unit via radio signal-433 MHz penetrates refrigerators and walls
- Supplied: batteries, main unit, remote unit, flip-open stand, wall mount, Velcro®, Traceable® Certificate



37804-10



37804-11

Cat. No.	Range	Resolution	Accuracy	Probe
37804-10	-22.0 to 158.0°F (-30.0 to 70.0°C)	0.1°	±1.0°C	Main unit plus remote sensor with bottle (patented)
37804-11				Accessory Bottle Remote module (set to channel 1, 2, or 3)

## Traceable® Platinum High-Accuracy Refrigerator/Freezer Thermometer

### Displays MIN/MAX temperatures for previous 24 hours (for each hour) and previous 7-days (for each day); or previous 31 days (for each day)

- Smart-Alarm™ features a visual/audible alarm that continues to alarm even if the unit returns to non-alarm conditions
- Time/date stamp key shows exact time and date for all minimum and maximum readings
- Triple display shows current temperature in °F or °C, as well as MIN/MAX temperatures
- 37804-04 and 37804-05 are ideal for ultra-low freezer applications
- 37803-88 and 37804-03 are ideal for refrigerator/freezer applications
- Supplied: platinum probe, stand, wall mount, batteries, Traceable® Certificate



37803-88



37804-03/37804-05



37804-04

Cat. No.	Range	Resolution	Accuracy	Probe	Calibration points
<b>Platinum RTD stainless-steel probe</b>					
37804-04	-148.00 to 199.99°F (-100.00 to 199.99°C)	0.01°	±0.1°C	Handle: 0.33 cm dia. x 16 cm stem, 22 cm overall	-80°C, 0°C, 50°C and 190°C
<b>Refrigerator/Freezer</b>					
37803-88	-58.00 to 158.00°F (-50.00 to 70.00°C)	0.01°	±0.1°C	Glycol-filled bottle (patented)	-40°C, 0°C and 50°C
37804-03				4.75 mm dia. x 1.9 cm long	-40°C, 0°C and 50°C
37804-05	-148.00 to 158.00°F (-100.00 to 70.00°C)	0.01°	±0.1°C	4.75 mm dia. x 1.9 cm long	-80°C, -40°C, and 0°C



98767-30



94460-92

94460-91

## Traceable® High-Accuracy Refrigerator Thermometers

High accuracy thermometer monitors 2 different areas of any refrigerator or freezer

- Reads to 0.01° while monitoring MIN/MAX temperatures in refrigerator and freezer simultaneously or two refrigerator locations with the exact time and date readings occurred, °F/°C switchable
- Two channel alarms provide unique visual (LED's) and audio alerts when temperature rises above or falls below user-defined high and low set points
- Smart-Alarm™ features a visual/audible alarm that continues to alarm even if unit returns to non-alarm conditions
- Unit displays the exact time and date when dual thermometer alarms are triggered, alarms are programmable in 0.1° increments
- Supplied: battery, 3 m cable, magnetic strips, Velcro®, bench stand, Traceable® Certificate

Cat. No.	Range	Resolution	Accuracy	Probe
98767-30	-58.00 to 158.00°F (-50.00 to 70.00°C)	0.01°	±0.3°C	1 bottle (patented)
94460-92				2 bottles (patented)
94460-91				2 Bullets™ (4.75 mm diameter x 1.9 cm long)



94460-72



94460-70

94460-71

## Traceable® Refrigerator/Freezer Thermometers

The world's most popular refrigerator/freezer thermometer

- Accurately monitor temperatures in freezers, water baths, heating blocks, incubators, and refrigerators with this enclosed temperature-buffered sensor, °F/°C switchable
- Minimum/maximum monitors readings overnight, on weekends, or for any time period
- Alarm is programmable in 1° increments, sounds continuously when temperature rises above/falls below set points and can be turned off manually
- Visual and audible signals continue even if temperature returns to non-alarm range
- Supplied: flip-open stand, 3 m cable, wall mount, Velcro®, magnetic strips, Traceable® Certificate

Cat. No.	Range	Resolution	Accuracy	Probe
94460-70	-58 to 158°F (-50 to 70°C)	1°	±1°C	1 Bullet™ (4.75 mm diameter x 1.9 cm long)
94460-72				1 bottle (patented)
94460-71				1 vaccine bottle



94460-56

## Traceable® Digital-Bottle™ Refrigerator/Freezer Thermometer

Sealed unit can be placed inside a refrigerator

- MIN/MAX memory monitors readings overnight, on weekends, or for any time period—a significant advantage over glass thermometers displaying only current temperature
- The entire unit, including the bottle and display, may be placed in any environment within the operating range of the thermometer, °F/°C switchable
- Supplied: battery, holder, double-backed tape, Velcro®, Traceable® Certificate

Cat. No.	Range	Resolution	Accuracy	Probe
94460-56	-20.0 to 50.0°C (-4.0 to 122.0°F)	0.1°	±0.5°C between 0 to 50°C; otherwise ±1°C	Glycol-filled bottle (patented)
94460-58				Glass-bead filled bottle

## Traceable® Jumbo Refrigerator/Freezer Thermometer

### Jumbo LCD simultaneously shows MIN/MAX/current temperature

- All-time favourite modular thermometer is easy to mount or position on any flat surface
- Valuable MIN/MAX memory records reading over any time period, °F/°C switchable
- Easy-read digital display with jumbo digits updates every 10 seconds to maintain exact test results
- Supplied: battery, magnet, stand, probe, 3 m cable, Traceable® Certificate

Cat. No.	Range	Resolution	Accuracy	Probe
94460-81				Bullet™ (4.75 mm diameter x 1.9 cm long)
94460-82	-58.0 to 158.0°F (-50.0 to 70.0°C)	0.1°	±1°C	Bottle (patented)
94460-83				Vaccine bottle



## Traceable® Memory-Card Refrigerator/Freezer Thermometer

### Thermometer captures 5.9 million readings on removable SD card

- User-defined temperature observations can be made once per minute up to once every 720 minutes
- Unit meets all current CDC requirements and recommendations for vaccine monitoring and storage
- USB memory card reader plugs directly into Windows and Mac—no software to install
- Text report includes date/time of day and sensor readings
- 37803-84 model is ideal for monitoring refrigerators and freezers
- 37803-85 model is ideal for Quality Control and research
- Alarm sounds and LED flashes when temperature rises above or falls below user-set points
- Unique 4-line display shows temperature of detachable bottle probe, ambient temperature, humidity and time, °F/°C switchable
- Supplied: 256 mb SD memory card, memory card reader, batteries, magnetic strips, Velcro®, flip open stand, A/C adaptor, Traceable® Certificate

Cat. No.	Probe Range	Resolution	Accuracy	Probe
37803-84	-22.0 to 158.0°F (-30.0 to 70.0°C)	0.1°	±0.5°C from 0°C to 25°C; ±0.6°C from 25°C to 70°C	Bottle (patented)
37803-85			±1.2°C from -30°C to 0°C and 50 to 70°C	Stainless-steel



## Traceable® Refrigerator/Freezer Plus™ Thermometer

### Temperature-buffered bottle insulates sensor from rapid changes

- Triple display simultaneously shows MIN/MAX and current temperatures, °F/°C switchable
- Monitors high and low readings overnight, on weekends, or for any time period—a significant advantage over current read-only temperatures
- Alarm is programmable in 1° increments and alerts user when temperature rises above or falls below a set point
- Supplied: battery, Velcro®, magnetic strips, 3 metre cable, Traceable® Certificate

Cat. No.	Range	Resolution	Accuracy	Probe
94460-88				Bullet™ (4.75 mm diameter x 1.9 cm long)
94460-74	-58.0 to 158.0°F (-50.0 to 70.0°C)	0.1°	±0.5°C (±0.9°F)	Bottle (patented)
94460-73				Vaccine bottle



### Traceable™ Certificate

To assure accuracy an individually-numbered Traceable™ Certificate which assures accuracy from an ISO/IEC 17025:2005 (1750.01) calibration laboratory accredited by A2LA. It indicates traceability of measurements to the SI units through NIST or other recognized national measurement institutes (NMI) that are signatories to the CIPM Mutual Recognition Agreement.

## Traceable® Dual Thermometer

Dual-probe thermometer gives accurate readings of two separate areas in a refrigerator/freezer



94460-62



94460-61

- Two-part display shows °F or °C probe temperatures in distinct sections of refrigerator or freezer
- Easy-operate, always-ready unit quickly recalls exact date and time when MIN/MAX temperatures occur
- Audible and visual alarm feature provides alert when temperature rises above or falls below two set points, alarm is programmable in 1 degree increments
- Supplied: battery, flip-open stand, probes, 1 m cable, magnetic strips, Velcro® tape, Traceable® Certificate

Cat. No.	Range	Resolution	Accuracy	Probe
94460-61	-58.0 to 158.0°F	0.1°	±1.0°C	0.63 cm dia. x 3.1 cm length, waterproof probes (2 each)
94460-62	(-50.0 to 70.0°C)			2 Bottles

## Traceable® Sentry™ Thermometer °F/°C

Simple one-key reset operation resets MIN/MAX memories



94460-77



94460-87

94460-71

- Constantly monitor high, low and current temperatures
- Sensor and 3 metre cable may be placed underwater, in refrigerator, or freezer
- Unplugging the cable activates a sensor inside the unit for monitoring ambient temperature
- Supplied: battery, probe, 3 metre cable, wall mount, magnet, stand, Velcro®, Traceable® Certificate

Cat. No.	Range	Resolution	Accuracy	Probe
94460-77	-50 to 70°C	1°	±1°C	Bullet™ (4.75 mm diameter x 1.9 cm long)
94460-87				Bottle (patented)
94460-71				Vaccine bottle

## Traceable® Radio-Signal Remote Thermometer

Monitor up to 3 different remotes at same time from up to 30 m away



94460-78



94460-79

98767-23

98767-53

98767-24

- Main unit can receive/display data from up to 3 different remote modules, and may be set to channel 1, 2 or 3
- Displays trend indicator shows whether temperature is rising or falling
- MIN/MAX memory allows monitoring conditions over short or long periods
- Alarm sounds when temperature rises above/falls below set points, may be programmed in 1° increments
- External probe and 3 metre cable perform accurately even when both are underwater, °F/°C
- Supplied: battery, remote module, probe, cable, flip-open stand, wall-mount, Traceable® Certificate

Cat. No.	Ambient Range	External Range	Resolution	Accuracy	Probe
94460-78	-20.0 to 60.0°C	-5.0 to 50.0°C	0.1°	±1°C	Internal ambient & Bullet™ (4.75 mm dia. x 1.9 cm long)
<b>Accessories</b>					
94460-79	-20.0 to 60.0°C	-5.0 to 50.0°C	0.1°	±1°C	Bullet™ (4.75 mm dia. x 1.9 cm long)
98767-23					Stainless-steel 0.3 cm dia. x 21.5 cm; 1.5 m cable
98767-24					Bottle (patented)
98767-53					Vaccine bottle

## Traceable® Thermometer with Time/Date Max/Min Memory

### Unique, wide-range, triple-display thermometer offers amazing versatility and accuracy

- Thermometer displays current, MIN and MAX temperatures, °F/°C switchable
- Unit captures time and date when the MIN/MAX temperatures occurred
- Displays 0.95 cm high digits show the MIN/MAX of ambient or probe temperature, time and month/day
- Sensor and 1.8 m cable perform accurately even when both are underwater
- Supplied: battery, probe, 1.8 m cable, wall mount, flip-open stand, Velcro®, Traceable® Certificate

Cat. No.	Range	Resolution	Accuracy	Probe
90002-01	-40.0 to 176.0°F (-40.0 to 80.0°C)	0.1°	±1.5°C	Bullet™ (4.75 mm diameter x 1.9 cm long)
90002-02				Bottle (patented)
90002-03				Vaccine bottle



90002-01



90002-02



90002-03

## Traceable® Econo Refrigerator Thermometer

### Low-cost mini-size temperature sensor is always on-duty in refrigerator

- Economical refrigerator monitor has wide temperature range and is easy to switch from °F to °C
- Ideal unit for use in storerooms, labs, offices, hoods, cabinets
- Remarkable, clear-view display updates every 30 seconds
- Supplied: battery, suction cup, Velcro®, Traceable® Certificate

Cat. No.	Range	Resolution	Accuracy
90080-01	32 to 113°F (0 to 45°C)	0.1°	±1°C between (5 to 25°C) ±1.5°C otherwise



## Traceable® Big-Digit See-Thru™ Thermometer

### Jumbo, see-thru display automatically clears and updates MIN/MAX readings daily

- Smart design feature routinely resets MIN/MAX every day
- Perfect for use in fume hoods, refrigerators, plant areas
- Can be easily attached to outside of window to show outdoor temperatures
- Supplied: battery, mounting tape, Velcro® strip, Traceable® Certificate

Cat. No.	Range	Resolution	Accuracy
90080-11	-25 to 70°C	0.1°	±1°C



### Traceable™ Certificate

To assure accuracy an individually-numbered Traceable™ Certificate which assures accuracy from an ISO/IEC 17025:2005 (1750.01) calibration laboratory accredited by A2LA. It indicates traceability of measurements to the SI units through NIST or other recognized national measurement institutes (NMI) that are signatories to the CIPM Mutual Recognition Agreement.

## Stainless-steel Probe Thermometer Specifications Chart

Cat. No.	Page No.	Traceable® Certificate Supplied	Range	Resolution	Accuracy (°C)	Probe Length (cm)	Waterproof	Battery	Alarm	Display MIN/MAX
37804-04	11	Yes	-148 to 199°F / -100 to 199°C	0.1°	±0.01	22.86	probe only	1105	yes	yes
37804-06/37804-07	16	Yes	-328 to 932°F / -200 to 500°C	0.1° to 0.0001°	±0.05	16 / 14.7	no	1112	no	yes
90080-09	17	Yes	-58 to 302°F / -50 to 150°C	0.0001°	±0.05	22.86	probe only	1112	no	yes
94460-98	17	Yes	-58 to 158°F / -50 to 70°C	0.01°	±0.3	15.8	no	1105	yes	yes
37803-92	17	Yes	-58 to 752°F (-50 to 400°C)	0.01°	±(0.1% +0.2°C)	15.2	no	1112	no	yes
98767-25	18	Yes	32 to 392°F / 0 to 200°C	1°	±2	21.6	probe only	1105	yes	no
86460-06	18	Yes	-99 to 199.9°C	0.1°	±2	7.6	probe only	1112	no	no
90000-23/90000-29	18	Yes	-2.00 to 39.00°C	0.01°	±0.05	15.8	probe only	1105	yes	yes
86460-01	18	Yes	-58 to 572°F / -50 to 300°C	0.1°	±1	19	probe only	1039	yes	yes
90205-20	19	Yes	-4 to 500°F / -20 to 250°C	0.1°	±1.0 / ±0.5	13.97	probe only	1039	no	no
37803-90	19	Yes	-58 to 572°F / -50 to 300°C	0.1°	±1.0	19	yes	1039	yes	yes
90205-26	19	Yes	-58 to 572°F / -50 to 300°C	0.1°	±1.0	6.9	probe only	1039	no	yes
90205-21	19	Yes	-4 to 572°F / -20 to 300°C	0.1°	±1.0 / ±0.5	13.97	probe only	1039	yes	yes
37803-87	19	Yes	14 to 230°F / -10 to 110°C	0.1°	±1	50.8	yes	1105	no	no
08402-61	20	Yes	-58 to 500°F / -50 to 260°C	0.1°	±1	18.4	probe only	1105	yes	yes
90205-22	20	Yes	-58 to 572°F / -50 to 300°C	0.1°	±1/±0.05*	12.7	yes	1102	no	yes
94460-75	20	Yes	-58 to 158°F / -50 to 70°C	0.1°	±1	2.3	yes	n/a	no	n
08402-60	20	Yes	-58 to 302°F / -50 to 150°C	0.1°	±1	17.8	probe only	1039	no	no
90225-15	21	Yes	-58 to 302°F / -50 to 150°C	0.1°	±1	20.32	probe only	1039	no	no
90205-01	21	Yes	-58 to 302°F / -50 to 150°C	0.1°	±0.2*	20.32	probe only	1039	no	no
94460-40	21	Yes	-58 to 572°F / -50 to 300°C	0.1°	±1	28.9	probe only	1039	no	no
90205-02	21	Yes	-58 to 572°F / -50 to 300°C	0.1°	±0.5*	28.9	probe only	1039	no	no
90205-05	21	Yes	-58 to 572°F / -50 to 300°C	0.1°	±1.0/±0.5*	20.32	yes	1039	no	yes
90205-04	22	Yes	-58 to 536°F / -50 to 280°C	0.1°	±1.0/±0.4*	20.32	yes	1039	no	no
98767-43	22	Yes	-58 to 572°F / -50 to 300°C	0.1°	±1.5 / ±0.4*	8.89	probe only	1039	no	yes
98767-40	22	Yes	-58 to 572°F / -50 to 300°C	0.1°	±1.0 / ±0.3*	11.43	probe only	1105	no	yes
98767-22	23	Yes	-58 to 302°F / -50 to 150°C	0.1°	±1.0	13.33	probe only	1039	no	no
90205-15	23	Yes	-58 to 572°F / -50 to 300°C	0.1°	±1.5/±0.4*	8.89	probe only	1039	no	yes
90205-25	23	Yes	-58 to 536°F / -50 to 280°C	0.1°	±1	20.32	probe only	1039	no	no
98767-35	23	Yes	-58 to 536°F / -50 to 280°C	0.1°	±0.4*	20.32	probe only	1039	no	no
36842-95	23	Yes	-58 to 302°F / -50 to 150°C	0.1°	±1.0	13.3	probe only	1039	no	no
98767-41	23	Yes	-58 to 302°F / -50 to 150°C	0.1°	±0.3*	13.3	probe only	1039	no	no
90205-10	24	Yes	-58 to 302°F / -50 to 150°C	0.1°	±1	1.905	probe only	1039	no	no



37804-06



37804-08



37804-07 / 37804-09

### Traceable® Platinum Ultra-Accurate Thermometer

Most accurate thermometer available with 0.0001° resolution

- High-precision unit is designed for years of reliable service even in harshest environments
- Resolution set key changes display to show 1, 2, 3 or 4 digits after decimal
- Internal data logger automatically captures MIN/MAX readings every hour for last 24 hours
- Instant response probe updates readings 3 times per second for liquids, air/gas and semi-solids
- Supplied: battery, platinum probe, cable, computer output, plastic carrying case, Traceable® Certificate

Cat. No.	Unit Range	Probe Range	Resolution	Accuracy	Platinum RTD Stainless-steel Probe
37804-06	-200.00 to 500.000°C	-200.00 to 500.000°C	0.1° to 0.0001	±0.05°C or 0.05% between -80 to 290°C	0.33 cm dia. x 17.8 cm; 1.8 m cable
37804-07	500.000°C	-100.00 to 200.00°C			0.63 cm dia. x 15 cm; 2.7 m PTFE cable

#### Accessories

37804-08	Replacement Platinum RTD stainless-steel Probe
37804-09	Replacement Platinum RTD stainless-steel Bullet™ Probe
90080-21	Data Acquisition System Software
90225-22	Universal AC Adaptor



## Traceable® Digital Thermometer

### The laboratory standard

- Triple purpose stainless-steel probe for liquids, air/gas, and semi-solids
- Ideal for foods, pharmaceuticals, petroleum products, gas systems, soil, ovens, and more
- Unit reads in °C and °F and includes a HOLD key for freezing data on the display for future readings
- Instant HISTORY key recalls minimum and maximum readings over the past 24 hours
- Unit conforms to ITS-90 International Temperature Standard
- Supplied: battery, probe, cable, computer output, plastic carrying case, Traceable® Certificate

Cat. No.	Range	Resolution	Accuracy	Stainless-steel Probe
90080-09	-58.000 to 302.000°F (-50.000 to 150.000°C)	0.0001°	±0.05°C between 0.0 to 100°C	15.2 cm stem, 0.76 cm dia. x 22.9 cm; cable: 1.6 m



#### Accessories

90080-18	Replacement Probe: -50.000 to 150.000°C	—	±0.05°C between 0.0 to 100°C	15.2 cm stem, 0.76 cm dia. x 22.8 cm; cable: 1.6 m
90080-19	Micro Probe: -50.000 to 150.000°C	—	±0.2°C	7 cm stem, 0.1cm dia. x 14cm; 152 cm cable
90080-21	Data Acquisition System Software			
90225-22	AC Adaptor			

## Traceable® High-Accuracy Dual Thermometer

### Dual-probe unit provides exact results for critical requirements, quality control, and routine readings

- Two probes are useful for monitoring inlets and outlets, tracking two tests simultaneously or measuring temperatures in two locations
- Display shows current °F/°C and minimum/maximum temperatures
- Minimum/maximum monitors readings overnight, on weekends, or any time period; unit displays the exact time and date when the minimum and maximum temperature occurred
- Visual/audible alarms are programmable in 0.1° increments and provide alerts when temperature rises above/ falls below high/low set points
- Supplied: batteries, flip-open stand, probe, cable, magnetic strips, Velcro®, wall mount, Traceable® Certificate



Cat. No.	Range	Resolution	Accuracy	Probe
94460-98	-58.00 to 158.00°F (-50.00 to 70.00°C)	0.01°	±0.3°C	1 stainless-steel probe, 3.1 mm dia. x 15.8 cm stem; 1.5 m cable
94460-99				2 stainless-steel probes, 3.1 mm dia. x 15.8 cm stem; 1.5 m cable

## Traceable® RTD Platinum Thermometer

### State-of-the-art technology delivers high platinum performance

- High-precision thermometer is geared specifically for measuring temperatures in ovens, cuvettes, gas systems, water baths, wastewater, incubators, chemical solutions, and petroleum products
- Fail safe display shows low battery and probe condition
- Computer output allows thermometer to be connected to a computer or data logger
- Platinum (100-ohm) 4-wire probe is triple-purpose for liquids, air/gas, semi-solids
- Supplied: platinum RTD probe, battery, Traceable® Certificate

Cat. No.	Range	Resolution	Accuracy	Probe
37803-92	-58 to 752°F (-50 to 400°C)	0.01° below 200°, 0.1° above 200°	±(0.1% + 0.2°C) below 200°, ±(0.15% + 0.5°C) above 200°	15.2 x 0.33 cm dia.; 1 m cable

#### Accessories

19601-30	Data Acquisition System (additional information, see page 66)
19601-34	Easy-Use Adaptor (for international adapters see page 79)



### Traceable™ Certificate

To assure accuracy an individually-numbered Traceable™ Certificate which assures accuracy from an ISO/IEC 17025:2005 (1750.01) calibration laboratory accredited by A2LA. It indicates traceability of measurements to the SI units through NIST or other recognized national measurement institutes (NMI) that are signatories to the CIPM Mutual Recognition Agreement.



## Traceable® –100.0° Platinum Freezer Thermometer

### Fast-response RTD platinum probe supplies high-precision results

- Accurate –100.0°C platinum probe is triple purpose for liquids, air/gas, and frozen materials
- Ultra-slim micro-3 metre cable allows freezer doors to seal tightly around it
- Adjustable probe holder, magnets, Velcro® allow unit/probe to be used anywhere in lab/field
- Supplied: battery, probe, cable, probe holder, Velcro®, magnetic strips, carrying case, Traceable® Certificate

Cat. No.	Range	Resolution	Accuracy	Probe
86460-06	–99 to 199.9°C	0.1°	±2°C	0.4 cm dia. x 7.6 cm probe; 3 m cable



90000-23

## Traceable® Extreme-Accuracy Thermometer

### Delivers exact time/date when temps rise above/fall below set-points

- Two audible and two visual alarms warn when temperatures rise above/fall below set-points, unit displays the exact time and date when alarm was triggered
- Efficient alarms are programmable in 0.1° increments and sound continuously until disabled
- Remarkable, three-line display shows minimum/maximum, current temperatures
- Accurate readings with tip penetration of 0.84 cm, unit reads °C and °F
- Supplied: batteries, flip-open stand, Velcro®, magnet, wall mount, probe, cable, Traceable® Certificate

Cat. No.	Range	Resolution	Accuracy	Probe
90000-23	0.00° (–2.00 to 2.00°C)	0.01°	±0.05°C within ±2°C of standard	3.1 mm dia. x 15.8 cm stem length, 1.5 m cable
90000-25	25.00° (23.00 to 27.00°C)			
90000-27	37.00° (35.00 to 39.00°C)			
90000-29	0.00°, 25.00°, 37.00°—all 3 above			



## Traceable® Kangaroo™ Thermometer

### Pocket-size thermometer features handy cable storage and probe brackets for portability

- Precision memory feature automatically captures and recalls minimum/maximum temperature readings over any time period, °F/°C switchable
- Efficient alarm continues to sound every minute until temperature returns to non-alarm conditions
- Supplied: battery, probe, cable, flip-open stand, Traceable® Certificate

Cat. No.	Range	Resolution	Accuracy	Probe
86460-01	–58 to 572°F (–50 to 300°C)	0.1° from –19.9 to 199.9°C; or 1°C elsewhere	±1°C from –30 to 250°C; or ±2°C elsewhere	19 cm x 0.35 cm dia.; 1 m cable



## Traceable® Alarm Thermometer/Alarm Timer

### Stainless-steel probe and cable may be placed in an oven or incubator

- Display shows time, current temperature, and alarm temp setting, °F/°C switchable
- Metal cable may be placed in ovens and incubators making this unit ideal for those applications
- Unique, adjustable display and large digits allow for viewing from 3 metres at any angle
- Supplied: battery, probe, cable, Traceable® Certificate

Cat. No.	Range	Resolution	Accuracy	Probe
98767-25	32 to 392°F (0 to 200°C)	1°	±2°C	21.6 cm x 0.63 cm dia.; 1 metre metal cable

## Traceable® Extra Long-Probe Waterproof Thermometer

### Extra-long 50.8 cm probe created for deep vessels

- Thermometer is ideal for large beakers/flasks, vats, pails and drums
- Waterproof to a depth of 3 m (meter/probe/cable)
- Jumbo 4.2 cm LCD can be read from up to 21 metres
- Supplied: stainless-steel probe, spring-loaded holder, wall mount, batteries, Traceable® Certificate

Cat. No.	Range	Resolution	Accuracy	Probe
37803-87	14.0 to 230.0°F (-10.0 to 110.0°C)	0.1	±1°C	stainless-steel 0.5 cm dia. x 50.8 cm length; 3 m cable



## Traceable® Memory/Waterproof Thermometer

### Amazing memory captures, stores and recalls 10 temperature readings

- Broad temperature range and extra-high accuracy solve 99% of most lab/field data collecting needs
- Records minimum and maximum memory readings over any time period, °F/°C switchable
- Supplied: battery, probe, 3 m cable, probe holder, Traceable® Certificate

Cat. No.	Range	Resolution	Accuracy	Probe
37803-90	-58 to 572°F (-50 to 300°C)	0.1° from -20 to 200°C; 1°C elsewhere	±1°C between -20 to 200°C	0.48 cm dia. x 19 cm



## Traceable® Full-Scale Thermometers

### Readings are updated every second and displayed on a 0.95 cm LCD

- Stainless-steel probe with piercing tip delivers constant temperatures at both ends of scale
- 90205-21 and 4368 models include high-low alarms, minimum/maximum memories and a hold feature
- Magnetic back attaches unit to any metal surface (incubators, freezers, water baths) for hands-free use
- Supplied: battery, probe, cable, flip-open stand, clip, magnetic back, Traceable® Certificate

Cat. No.	Range	Accuracy	Resolution
90205-20	-4 to 500°F (-20 to 250°C)	±1.0°C between -20 to 100°C	0.1° above -20 to 200°C; or 1°C elsewhere
98767-31		±0.5°C at tested points	
90205-21	-4 to 572°F (-20 to 300°C)	±1.0°C between -20 to 100°C	
98767-31		±0.5°C at tested points	



## Traceable® Snap-in Module with Probe

### Panel-mount unit, snaps into place or can be used free-standing

- Valuable minimum/maximum memory records reading over any time period
- Easy-read digital display with jumbo digits updates every second to maintain exact test results
- Supplied: battery, probe, cable, Traceable® Certificate

Cat. No.	Range	Resolution	Accuracy	Probe
90205-26	-58 to 572°F (-50 to 300°C)	0.1° from -20 to 200°C; or 1°C elsewhere	±1°C from -20 to 100°C	0.35 cm dia. x 6.9 cm probe length including handle; 3 metre cable



### Traceable™ Certificate

To assure accuracy an individually-numbered Traceable™ Certificate which assures accuracy from an ISO/IEC 17025:2005 (1750.01) calibration laboratory accredited by A2LA. It indicates traceability of measurements to the SI units through NIST or other recognized national measurement institutes (NMI) that are signatories to the CIPM Mutual Recognition Agreement.



### Traceable® Mini-Thermometer

Simple three key thermometer is business-card sized for easy storage

- Stainless-steel probe can be used to measure liquid, air/gas, or semi-solids
- Small but powerful unit fits easily into tool kits, briefcases or pockets
- Supplied: battery, probe, cable, Traceable® Certificate

Cat. No.	Range	Resolution	Accuracy	Probe
08402-60	-58.0 to 302.0°F (-50.0 to 150.0°C)	0.1°	±1°C between (-30 to 150°C), otherwise ±2°C	0.35 cm dia. x 17.8 cm; 45.7 cm cable



### Traceable® Digital Thermometer

Ideal for use in cuvettes, soils, water baths, waste water, and incubators

- Countdown timer, programmable Hi/Lo alarms, MIN/MAX memory, °F/°C switchable
- High/low alarms may be programmed in 1° increments, alarm mode may be switched off when not required
- Unit features a countdown timer for 59 hours, 59 minutes to 1 minute and may be set in 1-minute intervals
- Supplied: battery, probe, 1 metre cable, probe holder, flip-open stand, Traceable® Certificate

Cat. No.	Range	Resolution	Accuracy	Probe
08402-61	-58.0 to 500.8°F (-50.0 to 260.0°C)	0.1°	±1°C	12.7 cm dia., x 18.4 cm length, 1 m cable



90205-22

### Traceable® Water-resistant Thermometers

Water-resistant case, cable, and stainless-steel probe monitors temperature in any wet area

- Water/shockproof case provides flawless readings in freezers, water baths, incubators, tanks
- Stainless-steel probe efficiently monitors temperature in liquids, semi-solids, air/gases
- One-key operation quickly recalls Min/Max readings over any time period, °F/°C switchable
- Supplied: battery, probe, 3 metre cable, suction cups, magnet, Velcro® strips, Traceable® Certificate

Cat. No.	Range	Resolution	Accuracy	Probe
90205-22	-58 to 572°F (-50 to 300°C)	0.1° from -19.9 to 199.9°C; otherwise 1°C	±1°C between -20 and 100°C	0.35 cm dia. x 12.7 cm probe length, 3 metre cable
98767-33			±0.5°C at tested points	



### Traceable® Solar-Powered Thermometer

Solar-powered thermometer with a back-up battery

- Efficient and cost-saving solar panels make unit environmentally attractive
- Sensor and cable perform accurately even under water, °F/°C switchable
- Supplied: back-up battery, mounting screw, 3 metre cable, Velcro®, Traceable® Certificate

Cat. No.	Range	Resolution	Accuracy	Sensor
94460-75	-58.0 to 158.0°F (-50.0 to 70.0°C)	0.1°C	±1°C between (-20.0 to 70.0°C).	cable/probe: 4.75 mm x 20.3 mm, waterproof

## Traceable® Lollipop™ Shock/Water-resistant Thermometers

Featherweight, wide-range covers 99% of temperature measurement needs

- Shock/water-resistant unit delivers reading updates every second
- One-key operation recalls MIN/MAX temperature results, °F/°C switchable
- Supplied: battery, probe, protective sleeve with pocket clip, Traceable® Certificate

Cat. No.	Range	Resolution	Accuracy
90205-05	-58 to 572°F (-50 to 300°C)	0.1° from -19.9 to 199.9°C; otherwise 1°C	±1°C between -20 and 100°C
98768-49			±0.5°C at tested points



90205-05

## Traceable® Long-Stem Thermometers

Ideal for replacing all glass and mercury thermometers in the lab

- On/off switch provides longer battery life, °F/°C switchable range
- Long stem allows for taking readings while stirring and is ideal for use in incubators and ovens
- Supplied: battery, probe, protective sleeve with pocket clip, Traceable® Certificate

Cat. No.	Range	Resolution	Accuracy	Stem Length	Overall Length
90225-15	-58 to 302°F (-50 to 150°C)	0.1° from -20 to 200° (1° otherwise)	±1°C	20 cm	28 cm
90205-01			±0.2°C at tested points	20 cm	28 cm
94460-40	-58 to 572°F (-50 to 300°C)		±1°C	28.9 cm	36.5 cm
90205-02			±0.5°C at tested points	28.9 cm	36.5 cm



90225-15

## Traceable® Waterproof Food HACCP Thermometer

Versatile, no-touch infrared and piercing probe combo create perfect HACCP thermometer

- Designed specifically as a HACCP (Hazard Analysis and Critical Control Point) thermometer for food safety
- LED's indicate the HACCP zones: green light under 4°C (40°F), green light over 60°C (140°F) and red danger light between 4 to 60°C (40 to 140°F)
- Display shows current temperature, MIN/MAX temperature, low battery and emissivity value for infrared
- Waterproof case and unique membrane keys prevent splashes/spills from permeating unit
- Infrared emissivity: 0.95 default; adjustable from 0.1 to 1.0; field of view: 2.5:1
- Supplied: battery, probe, Velcro®, Traceable® Certificate

Cat. No.	Sensor	Range	Resolution	Accuracy
98767-37	Infrared	-67 to 482°F (-55 to 250°C)	0.5°F (0.2°C) between -10 and 200; 1° elsewhere	±0.6°C between -5 to 65°C
	Piercing, stainless-steel	-67 to 626°F (-55 to 330°C)		±0.5°C



Infrared Sensor on back

### Traceable™ Certificate

To assure accuracy an individually-numbered Traceable™ Certificate which assures accuracy from an ISO/IEC 17025:2005 (1750.01) calibration laboratory accredited by A2LA. It indicates traceability of measurements to the SI units through NIST or other recognized national measurement institutes (NMI) that are signatories to the CIPM Mutual Recognition Agreement.



## Traceable® Waterproof Food Thermometers

### Waterproof pocket partner is ready for every temperature task

- Specially designed membrane keys prevents splashes/spills from permeating thermometer
- One-key operation quickly displays MIN/MAX readings
- Piercing probe tip adds extra versatility to data collection requirements
- Supplied: battery, probe holder/guard, pocket clip, key-chain, lanyard, Traceable® Certificate

Cat. No.	Range	Resolution	Accuracy
98767-43	-58 to 572°F (-50 to 300°C)	0.1° from -20 to 200°C; or 1°C elsewhere	±1.5°C
98767-44			±0.4°C at tested points



## Traceable® Food/Waterproof/Piercing Thermometers

### Piercing probe is ideal for use in labs, soil, foods, brewing and other applications

- Stainless-steel piercing tip easily evaluates internal temperatures of stored, frozen, or prepared foods
- Wide °F/°C range unit is a must-have for 99% of routine temperature measurements
- Stainless-steel probe is 0.48 cm diameter x 20 cm
- Supplied: battery, Traceable® Certificate



Cat. No.	Range	Resolution	Accuracy
90205-04	-58 to 536°F (-50 to 280°C)	0.1° from -20 to 200°C; or 1°C elsewhere	±1.0°C between -20 to 100°C
98767-39			±0.4°C at tested points



## Traceable® Dishwasher/Metal Thermometers

### Reports MIN/MAX temperatures achieved during dish-washing cycle

- Monitors temperatures for proper cleaning, °F/°C switchable
- Water-resistant and metal construction are ideal for food, wet labs, outdoors
- Supplied: clip for attaching to dishwasher rack, battery, Traceable® Certificate

Cat. No.	Range	Resolution	Accuracy	Feature
98767-27	-58.0 to 302.0°F (-50.0 to 150.0°C)	0.1°	±1°C between -20 to 150°C	stainless-steel probe
98767-28	-4.0 to 185.0°F (-20.0 to 85.0°C)			dishwasher clip



## Traceable® Flip-Stick™ Thermometers

### Multi-purpose, fold-out design makes taking probe readings in any position a snap

- Stainless-steel, multi-angle probe folds out for easy positioning in difficult to reach vessels
- Fully extended, chemical-resistant probe lengthens unit to 27.9 cm
- Unit includes MIN/MAX memory and HOLD key to freeze current display
- Supplied: probe, battery, wrist-strap, Traceable® Certificate

Cat. No.	Range	Resolution	Accuracy
98767-40	-58 to 572°F (-50 to 300°C)	0.1° from -20 to 200°C; or 1°C elsewhere	±1°C between -20 and 100°C
98767-32			±0.3°C at tested points

## Traceable® Rapid-Response™ Stainless-steel Folding Thermometer

Wide-range, high accuracy and fast response temperature readings

- Fold-up, protected probe permits ultimate portability
- Splash-resistant compact design with antimicrobial case inhibits growth of pathogens
- Multiple calibration points (0°C, 100°C, and 200°C)
- Supplied: opening for lanyard, battery, Traceable® Certificate



6130

Cat. No.	Range	Resolution	Accuracy	Dimensions
6130	-40.0 to 250.0°C (-40.0 to 482.0°F)	0.1°	±0.5°C from -20 to 250°C, otherwise ±1°C	4½ x 1½ x ¾"; probe: 2.8 x 0.13" dia
6131				6 x 1¾ x ¾"; probe: 4.4 x 0.15" dia

## Traceable® Robo™ Thermometers

Innovative, 180° rotating display can be quickly positioned to deliver accurate readings from any angle

- Plastic and stainless-steel construction make thermometer ideal for environments where safety is a concern
- 20 cm long stainless-steel probe is resistant to most lab chemicals
- Supplied: battery, probe case with clip, Traceable® Certificate



90205-25

Cat. No.	Range	Resolution	Accuracy
90205-25	-58 to 536°F (-50 to 280°C)	0.1° from -20 to 200°C	±1°C between -20 and 100°C
98767-35			±0.4°C at tested points

## Traceable® Pocket Thermometer

Unique, slim-line all-time-favourite thermometer

- Small, 85 gram pocket thermometer
- Probe guard extends overall length to 27.3 cm
- Supplied: battery, probe case, pocket clip, Traceable® Certificate



90205-15

Cat. No.	Range	Resolution	Accuracy
90205-15	-58 to 572°F (-50 to 300°C)	0.1° from -20 to 200° (1° otherwise)	±1.5°C
98767-36			±0.4°C at tested points

## Traceable® Jumbo-Display Dial Thermometer

Stainless-steel probe is perfect for viscous solutions

- Piercing tip makes it perfect for measuring temperatures of semi-solids, °F/°C switchable
- On/off switch provides longer battery life
- Supplied: battery, Traceable® Certificate



98767-22 / 98767-41

Cat. No.	Range	Resolution	Accuracy	Probe
98767-22	-58 to 302°F (-50 to 150°C)	0.1°	±1.0°C	0.35 cm diameter x 13.3 cm
98767-41			±0.3°C	0.35 cm diameter x 13.3 cm
36842-95			±1.0°C	1.2 cm diameter metal disk at end of probe for surface measurements



36842-95

### Traceable™ Certificate

To assure accuracy an individually-numbered Traceable™ Certificate which assures accuracy from an ISO/IEC 17025:2005 (1750.01) calibration laboratory accredited by A2LA. It indicates traceability of measurements to the SI units through NIST or other recognized national measurement institutes (NMI) that are signatories to the CIPM Mutual Recognition Agreement.

## General Purpose Probe Thermometer Specifications Chart

Cat. No.	Page No.	Traceable® Certificate Supplied	Range	Resolution	Accuracy	Length (cm)		Waterproof	Battery	Alarm	Display MIN/MAX
						Probe	Cable				
90000-75	24	Yes	-58 to 158°F / -50 to 70°C	0.1°	±1.0°C	1.9	3 metre	probe/cable	1105	no	yes
90000-37	24	Yes	-50 to 70°C	0.1°	±1.0°C	1.6	3 metre	probe/cable	1105	yes	no

### Traceable® Key-Chain Thermometer

Use-anywhere pocket thermometer with wide-range capacity



- Fast, one-second response makes it ideal for measuring ambient air temperatures
- 2.5 cm stainless steel probe is designed for penetration of semi-solids and liquid measurements
- Supplied: battery, key-chain, clip, Traceable® Certificate

Cat. No.	Range	Resolution	Accuracy
90205-10	-58 to 302°F (-50 to 150°C)	0.1°	±1°C from -20 to 100°C

### Traceable® Big-Digit Memory Thermometer

View ambient and probe temperatures from 25 feet



- Dual display permits reading ambient and probe temperatures simultaneously, °F/°C switchable
- MIN/MAX memory readings may be displayed and reset at the touch of a key
- Cable and sensor perform accurately when underwater, always-on instrument reads temperature constantly
- Supplied: flip-open stand, wall mounting, 3 metre cable, Velcro®, Traceable® Certificate, battery

Cat. No.	External probe range	Ambient sensor range	Resolution	Accuracy
90000-75	-58.0 to 158.0°F (-50.0 to 70.0°C)	23.0 to 122.0°F (-5.0 to 50.0°C)	0.1°	±1°C

### Traceable® Big-Digit 4-Alert Alarm Thermometer

Flashing LED indicator and four different alarm configurations for multi-use operation



- Thermometer has 4 unique alarms configurations: alarm triggers when temperature is higher than set point, lower than set point, outside of high or low set points or inside higher and low set points allowing precise monitoring of any experiment
- Green/red lights blink and alarm sounds when out-of-range condition is detected
- Continuous alarm sounds every minute for 5 seconds until the temperature returns to non-alarm condition or alarm is turned off
- Large digits are readable from 3 metres
- Supplied: removable suction cup, stand, wall mount, 1 m cable, Traceable® Certificate, battery

Cat. No.	Range	Resolution	Accuracy	Probe
90000-37	-50.0 to 70.0°C	0.1°	±1°C	4.75 mm x 20.3 mm, waterproof, 1 m cable



## Thermometer with Type-K Probe Specifications Chart

Cat. No.	Page No.	Traceable® Certificate Supplied	Unit Range	Supplied Probe Range	Resolution	Accuracy (°C)	Length			Display MIN/MAX	No. of Probes
							Probe	Cable	Battery		
91210-05	25	Yes	-328 to 2,498°F (-200 to 1,370°C)	-50 to 700°C	0.1°	±1.0	6.25 cm	1 m	1112	yes	1
91210-30	25	Yes	-328 to 2,498°F (-200 to 1,370°C)	-40 to 250°C continuous or 300°C short-term use	0.1° / 1°	±1.0	0.12 cm	1.2 m	1105	yes	1
98767-18	26	Yes	-328 to 2,372°F (-200 to 1,300°C)	-40 to 250°C continuous or 300°C short-term use	0.1° / 1°	±0.3% + 1°C	0.12 cm	1.2 m	1112	yes	1
91210-07	26	Yes	-58 to 2,000°F (-50 to 1,300°C)	-40 to 250°C continuous or 300°C short-term use	0.1° / 1°	±0.3% + 1°C	0.12 cm	1.2 m	1112	max only	1
91210-45	26	Yes	-58.0 to 2,372°F (-50.0 to 1,300°C)	-45 to 230°C	0.1°	±(1 + 0.75%)	5 cm	1 m	1112	no	1
91210-01	27	Yes	-50 to 1,999°F (-50 to 1,230°C)	-40 to 250°C continuous or 300°C short-term use	0.1°	±0.3% + 1°C	0.12 cm	1.2 m	1112	no	2
37803-91	27	Yes	-50 to 1,999°F (-50 to 1,300°C)	-40 to 250°C continuous or 300°C short-term use	0.1°	±0.3% + 1°C	0.12 cm	1 m	1112	max only	1
91210-31	27	Yes	-58 to 1,999°F (-50 to 1,300°C)	-40 to 250°C continuous or 300°C short-term use	1° or 0.1°	±0.3% + 1°C	0.12 cm	3 m (2)	1112	max only	2
86460-03	27	Yes	-58 to 1,382°F (-50 to 750°C)	-40 to 250°C continuous or 300°C short-term use	1°	±(1 + 0.75%)	0.12 cm	1.2 m	1112	no	1
37803-94	28	Yes	-40 to 1,200°C	-40 to 250°C continuous or 300°C short-term use	1°	±(1 + 1%)	0.12 cm	1.2 m	1112	no	2
37803-89	28	Yes	-328 to 2,431°F (-200 to 1,333°C)	-40 to 250°C continuous or 300°C short-term use	0.1°	±1.0	0.12 cm	1.2 m	1111	yes	2
91210-03	28	Yes	-50 to 1,999°F (-50 to 1,230°C)	-40 to 250°C continuous or 300°C short-term use	0.1°	±(1 + 0.75%)	0.12 cm	1.2 m (2)	1112	yes	2

### Traceable® Total-Range Thermometer

Water-resistant design is perfect for use in lab or plant's worst environments

- Unit recalls MIN/MAX temperature readings; updates display twice a second, °F/°C switchable
- HI/LO Alarm: indicates when temperature rises above or falls below high/low set points, 1° increments
- Timer feature displays duration of temperature conditions and time tests; capacity: 23 hours 59 minutes to 1 minute; resolution: 1 second
- Probe range (supplied with unit) -40 to 250°C continuous or 300°C short-term; accepts all Type-K thermocouples
- Supplied: flip-out stand, PVC casing, 1.2 m cable, Type-K beaded probe, batteries, Traceable® Certificate,



Cat. No.	Meter Range	Resolution	Accuracy
91210-30	-328 to 2,498°F (-200 to 1,370°C)	0.1° and 1°	±1°C between -50°C to 740°C, otherwise ±2°C

### Traceable® Memory Wide-Range Thermometer

High accuracy, wide range Type-K thermometer

- Triple purpose probe may be used to measure temperature of liquids, gases and semi-solids
- Computer output allows thermometer to be connected to a computer or data logger capturing/storing readings
- Count-up timer provides a relative time measurement while taking temperatures and recording MIN/MAX readings, °F/°C switchable
- Probe range (supplied with unit) -50 to 700°C, 15.8 cm stem x 0.33 cm dia, 1 m cable; meter accepts any Type-J, K or T probe
- Supplied: stainless-steel Type-K thermocouple probe, battery, Traceable® Certificate



Cat. No.	Meter Range	Resolution	Accuracy
91210-05	-328 to 2,498°F (-200 to 1,370°C)	0.1 from -200 to 640°C (-328 to 990°F) otherwise 1°	±1°C

#### Accessories

19601-34	Data Logger
----------	-------------

For additional Type-K probes, see page 29.

#### Traceable™ Certificate

To assure accuracy an individually-numbered Traceable™ Certificate which assures accuracy from an ISO/IEC 17025:2005 (1750.01) calibration laboratory accredited by A2LA. It indicates traceability of measurements to the SI units through NIST or other recognized national measurement institutes (NMI) that are signatories to the CIPM Mutual Recognition Agreement.



## Traceable® Big-Digit Type-K Thermometer

### Big digits are readable from 4.5 metres away

- Intuitive, four-key operation makes this thermometer extremely easy to use
- Max HOLD feature permits capturing the highest temperature achieved over any time period
- Probe range (supplied) –40 to 250°C continuous 300°C short-term; accepts all Type-K thermocouples
- Supplied: carrying case, 1.2 m Type-K beaded probe, battery, Traceable® Certificate,

Cat. No.	Meter Range	Resolution	Accuracy
91210-07	–58 to 2,000°F (–50 to 1,300°C)	0.1° and 1°	±0.3% of reading + 1°C between –50°C to 1,000°C, otherwise 0.5% of reading + 1°C

For additional Type-K probes, see page 29.



## Traceable® Workhorse™ Thermometer

### Type-K workhorse with wide temperature range has new chip design for ultra-low cost

- Recessed adjustable offset offers increased accuracy by allowing user to set thermometer to specific temperatures, in-house calibrations, or a particular sensor
- HOLD function freezes display for easy recording of current temperature
- Probe range (supplied) –45 to 230°C; 8.3 cm stem, 0.5 cm stem dia, 76 cm cable; accepts all Type K probes
- Supplied: stand, case, stainless-steel Type-K probe, battery, Traceable® Certificate

Cat No	Meter Range	Accuracy	Resolution
91210-45	–58 to 2,372°F (–50 to 1,300°C)	See below	0.1° from –50 to 200°; 1° elsewhere
	0 to 500°C	±(1°C + 0.75%)	
	500 to 750°C	±(1°C + 1%)	
	750 to 1,000°C	±(1°C + 2%)	
	1,000 to 1,200°C	±(3°C + 4%)	
	–20°C	±2°C	
	–40°C	±3°C	
–50°C	±4°C		

For additional Type-K probes, see page 29.



## Traceable® Waterproof Type-K Thermometer

### Rubber boot covers thermocouple to maintain waterproof integrity with thermocouple attached

- MIN/MAX key rapidly recalls highest and lowest temperature reading achieved
- Unique differential feature shows the difference in temperature from a set point
- Back-lighting key (BKLT) allows for reading in dark areas, large-digit display is readable from 3 m away
- Probe range (supplied): –40 to 250°C continuous or 300°C short-term; uses all Type-K thermocouples
- Supplied: carrying case, Traceable® Certificate, battery, Type-K beaded probe, cable

Cat. No.	Meter Range	Resolution	Accuracy
98767-18	–328 to 2,372°F (–200 to 1,300°C)	0.1° and 1°	±0.3% of reading + 1°C between –200°C to 1,000°C, otherwise 0.5% of reading + 1°C

For additional Type-K probes, see page 29.

## Traceable® Digital Thermometer with Recorder Output

Use with any chart recorder or computer that can accept millivolt signals

- Unit can recall the maximum temperature achieved at the touch of a button
- HOLD key freezes display to capture current reading, °F/°C switchable
- Probe range (supplied): -40 to 250°C continuous or 300°C short-term; uses all Type-K thermocouples
- Supplied: Type-K beaded probe, 1.2 m cable, battery, recorder output jack, Traceable® Certificate

Cat. No.	Meter Range	Resolution	Accuracy
37803-91	-50 to 1,999°F (-50 to 1,300°C)	0.1° from -50.0 to 199.9° and is 1° for all other readings	±0.3% of reading plus 1°C

For additional Type-K probes, see page 29.



## Traceable® Pocket-Size™ Thermometer

New microchip design combines ultra-low cost with ultra-high precision

- Mini-size and shockproof construction increases convenience and reliability
- One-switch operation makes it the perfect thermometer for routine use, °F/°C switchable
- Probe range (supplied): -40 to 250°C continuous or 300°C short-term; uses all Type-K thermocouples
- Supplied: nylon carrying case, 1.2 m Type-K beaded probe, battery, Traceable® Certificate

Cat. No.	Meter Range	Resolution	Accuracy
86460-03	-58 to 1,382°F (-50 to 750°C)	1°	±(1°C + 0.75%) from 0 to 500°C; ±(1°C + 1%) from 500 to 750°C; -20° ±2°C; -40° ±4°C; -50° ±5°C

For additional Type-K probes, see page 29.



## Traceable® Dual-Channel Thermometer

Data keeper records two probe readings and difference between them

- Dual display simultaneously shows one of two options: temperature of 2 probes or temperature of one probe and difference between probes
- Two-probe capability shows important temperature changes for 99% of all lab/field requirements, °F/°C switchable
- Probe range (supplied): -40 to 250°C continuous or 300°C short-term; uses all Type-K thermocouples
- Computer output allows thermometer to be connected to the computer or data logger for capturing/storing data
- Supplied: two 1.2 m Type-K beaded probes, battery, Traceable® Certificate

Cat. No.	Meter Range	Resolution	Accuracy
91210-01	-50 to 1,999°F (-50 to 1,230°C)	0.1° under 200°C and 1° above 200°C	0.3% + 1°C

For additional Type-K probes, see page 29.



## Traceable® 2-Channel Thermometer

View independent probe temperatures or the difference between probes

- Provides recessed front panel adjustable offsets on two channels allows the end to adjust thermometer to a specific temperature, in-house calibration, or particular sensor for increased accuracy, °F/°C switchable
- Rubberised case makes it a virtually all weather-proof instrument for shock and abusive conditions
- Probe range (supplied): -40 to 482°F continuous or 572°F short term; uses all Type-K thermocouples
- Supplied: Velcro®, strap, stand, two 1.2 m Type-K beaded probes, battery, Traceable® Certificate

Cat. No.	Meter Range	Resolution	Accuracy
91210-31	-58 to 1,999°F (-50 to 1,300°C)	switchable 0.1° or 1°	±0.3% plus 1°C

For additional Type-K probes, see page 29.



### Traceable™ Certificate

To assure accuracy an individually-numbered Traceable™ Certificate which assures accuracy from an ISO/IEC 17025:2005 (1750.01) calibration laboratory accredited by A2LA. It indicates traceability of measurements to the SI units through NIST or other recognized national measurement institutes (NMI) that are signatories to the CIPM Mutual Recognition Agreement.



## Traceable® Double Thermometer

**Computer output allows thermometer to be connected to computer/data logger to capture and store data**

- Monitors temperatures using 2 different probes/sensors making it easy to note temperature variations in an incubator/oven or temperature graduations in a bath water, °F/°C switchable
- Probe range (supplied): -40 to 250°C continuous or 300°C short-term; uses all Type-K thermocouples
- Supplied: computer output, fast-response probes (2), 1.2 m cables, battery, Traceable® Certificate

Cat. No.	Unit Range	Resolution	Accuracy
91210-03	-50 to 1,999°F (-50 to 1,230°C)	0.1° (from -50.0 to 199.9°F) and 1°C/°F over entire range	±(0.75% + 1°C).

Accessories	
19601-30	Data Acquisition System (for additional information see page 66)

For additional Type-K probes, see page 29.



## Traceable® Expanded-Range Thermometer

**Compact, pocket-size thermometer goes anywhere fast-response readings are needed**

- Shockproof, mini-size thermometer is ideal lab assistant for all plant and field applications
- Probe range (supplied with unit): -40 to 250°C continuous or 300°C short-term; uses all Type-K thermocouples; dual probes allow two tests to be monitored simultaneously
- One-switch operation makes it the perfect thermometer for routine use, °F/°C switchable
- Supplied: two 1.2 m Type-K beaded probes, battery, Traceable® Certificate

Cat. No.	Unit Range	Resolution	Accuracy
37803-94	-40 to 1,200°C	1°	±(1°C + 1%) from 0 to 750°C

For additional Type-K probes, see page 29.



## Traceable® Printing Thermometer

**Built-in printer provides permanent record with time-and-date stamp**

- Prints time and date for Max only, Min only, average only, and in circularly mode T1, T2 and differential, printing programs in intervals of 3 secs to 23h 59m 59s
- MIN,MAX or average temperature readings may be displayed or cleared at any time with the touch of a key
- Alarm feature may be set in 0.1 increments and will sound when temperature rises above or falls below set point
- Dual probe inputs allow displaying temperature of probe 1, probe 2, or difference (delta) of probe 1 and 2 (accepts Type J, K, T, or E probe), °F/°C switchable
- Supplied: two 1.2 m Type-K beaded probes, Traceable® Certificate, batteries, two thermal paper rolls (good for approximately 1400 printings per roll), ABS carrying case.

Cat. No.	Range	Resolution	Accuracy
37803-89	-328.0 to 2431.0°F (-200.0 to 1333.0°C)	0.1°	±1°C

Accessories	
37803-50	Replacement Printing Paper (pack of 2 rolls)
37803-55	Adaptor (for AC operation)

For additional Type-K probes, see page 29.

## Type-K Beaded Probe

### PTFE coated cable & beaded probe withstands wide temperature ranges

- Fast-response probe measures temperatures in semi-solids, liquids, air/gases
- High-precision thermocouple has efficient 1.2 m PTFE coated cable

Cat. No.	Probe Range	Probe Diameter	Cable Length
98767-21	-40 to 250°C continuous or 300°C short-term	0.15 cm	1.2 m



## Stainless-steel Type-K Probe

### Handle probe makes temperature measurement easy

- Probe provides fast, accurate readings of air/gases, semi-solids, liquids
- Stainless-steel probe with an ABS plastic handle

Cat. No.	Probe Range	Overall Length	Probe Diameter	Stem Length	Cable Length
98767-20	-50 to 700°C	19.0cm	0.3 cm	12.7 cm	1 m



## Low Temperature Type-K Probe

### Can be used in temperatures as low as -170°C

- Probe provides fast, accurate readings of air/gases, semi-solids, and liquids
- Stainless-steel probe with ABS plastic handle

Cat. No.	Probe Range	Overall Length	Probe Diameter	Stem Length	Cable Length
98767-71	-170 to 220°C	43.18 cm	0.4318 cm	30.48 cm	2.43 m

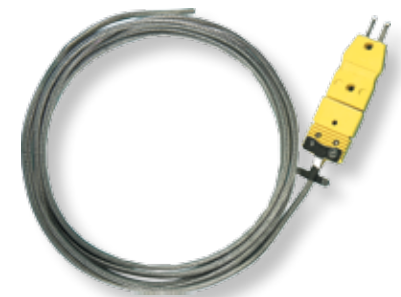


## High Temperature Type-K Braided Probe

### Can be used in temperatures as high as 1,093°C

- Beaded probe provides fast, accurate readings of air/gases, semi-solids, and liquids
- Stainless-steel probe attached to braided metal wire cable

Cat. No.	Probe Range	Cable Length	Cable Diameter
98767-72	-73 to 982°C continuous or 1,093°C short-term use	304.8 cm	0.4826 cm



## Type-K Surface Probe

### Designed to take surface temperatures

- Probe provides fast, accurate readings of air/gases, semi-solids, and liquids
- Stainless-steel probe with ABS handle

Cat. No.	Probe Range	Overall Length	Probe Diameter	Stem Length	Cable Length
98767-19	-73 to 760°C	21.59 cm	1.27 cm	12.7 cm	9.14 m

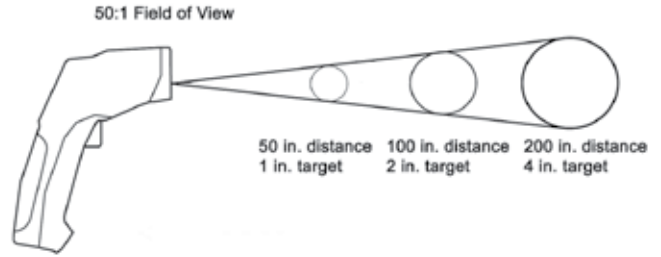


### Traceable™ Certificate

To assure accuracy an individually-numbered Traceable™ Certificate which assures accuracy from an ISO/IEC 17025:2005 (1750.01) calibration laboratory accredited by A2LA. It indicates traceability of measurements to the SI units through NIST or other recognized national measurement institutes (NMI) that are signatories to the CIPM Mutual Recognition Agreement.

**(1) What is Field of View?**

Field of View is similar to a flashlight. The further object is away, the bigger the diameter of the beam. The further you are from a sample, the larger the area the IR thermometer is measuring. For example: if the Field of View ratio for a thermometer is 6:1, then, when the thermometer is 15.2 cm from an object the sensor is looking at and measuring a 2.5 cm diameter. If the thermometer is 3.1 cm away, then the spot size being measured is 0.6 cm.



**(2) What is Emissivity?**

Emissivity refers to the amount of infrared radiation an object emits. The emissivity adjustment on IR thermometers is used to compensate for different materials. The default emissivity of 0.95 covers 90% of typical applications. For thermometers with adjustable emissivity a materials chart with suggested settings is provided. Generally very shiny, highly reflective surfaces require low emissivity settings.

**Infrared Thermometer Selection Chart**

Cat. No.	Page No.	Traceable® Certificate Supplied	Range	Resolution	Accuracy	Field of View (1)	Emissivity (2)	MIN/MAX Readings	Hi/Lo Alarms	Battery	Special Features
98767-45	31	Yes	-76.0 to 932.0°F / -60.0 to 500.0°C	0.1°	±2°C or 1%	11:1	0.95 fixed	MAX only	N/A	1105	Trigger grip
98767-50	31	Yes	-76.0 to 932.0°F / -60.0 to 500.0°C	0.1°	±1°C + 2%	12:1	0.1 to 1.00*	Yes	Yes	1105	Trigger grip
37803-95	31	Yes	-76 to 1,022°F / -60 to 550°C	0.1°	±2°C or 2%	12:1	0.1 to 1.00*	Yes	Yes	1105	Dual Lasers
98767-42	32	Yes	-4.0 to 752.0°F / -20.0 to 400.0°C	0.1°	±3°C or ±3%	7:1	0.2 to 1.00*	Yes	N/A	1112	Trigger grip
98767-46	32	Yes	0 to 788°F / -20 to 420°C	1°	±2°C or 2%	8:1	0.3 to 1.00*	Yes	Yes	1112	9 memories
37803-96	32	Yes	-58 to 1,832°F / -50 to 1,000°C	0.1° to 200, 1° over 200	±1.5% + 2°C	50:1	0.95 fixed	N/A	N/A	1112	Trigger grip
37803-97	32	Yes	-58 to 1,832°F / -50 to 1,000°C	0.1° to 200, 1° over 200	±1.5% + 2°C	50:1	0.1 to 1.00*	Yes	Yes	1112	Trigger grip
98767-47	33	Yes	-7.0 to 230°F / -22.0 to 110°C	0.1°	±1°C	1:1	0.95 fixed	Yes	N/A	1005	Key-chain
98767-48	33	Yes	-27 to 428°F / -33 to 220°C	0.1°	±1°C + 2%	1:1	0.95 fixed	N/A	N/A	1039	Pocket-clip/strap/ key-chain
98767-49	33	Yes	-67 to 482°F / -55 to 250°C	0.1°	±1°C + 2%	6:1	0.5 to 1.00*	Yes	N/A	1005	Wrist strap

\*Indicates adjustable emissivity in steps of 0.01°

## Traceable® Infrared Thermometer Gun

Point-and-read gun provides temperature results of any surface in less than one second

- Easy-read display is back-lit, has low-battery indicator, and tracks maximum readings, °F/°C switchable
- DATA HOLD freezes display and gives time to accurately record readings
- Emissivity is 0.95 fixed and unit includes an auto-off feature
- Supplied: batteries, Traceable® Certificate

Cat. No.	Infrared Range	Resolution	Accuracy	Field of view
98767-45	-76.0 to 932.0°F (-60.0 to 500.0°C)	0.1°	±2% of reading or ±2°C	11:1



## Traceable® Infrared Thermometer with Type-K Probe

Handy infrared unit with Type-K probe delivers flawless °C/°F surface measurements every time

- Audible, user-settable, high and low alarms signal out of range conditions
- Memory permits recalling individually captured readings
- Emissivity is adjustable from 0.10 to 1.00
- Probe range (supplied with unit): -40 to 250°C continuous or 300°C short-term; uses all Type-K thermocouples
- Supplied: Type-K probe, batteries, Traceable® Certificate

Cat. No.	Measurement	Range	Resolution	Accuracy	Field of view
98767-50	Infrared	-76 to 932°F (-60 to 500°C)	0.1°	2% of reading or ±2°C	12:1
	Type-K Probe	-83 to 2,552°F (-64 to 1,400°C)	0.1°	±1°C + 2%	n/a

For additional Type-K probes, see page 29.



## Traceable® Infrared Dual Laser Thermometer with Type-K Probe

Point-shoot-record with handy Type-K laser gun

- Dual lasers show the diameter of the area being measured, °F/°C switchable
- Thermometer displays the average of all measurements taken and the difference between the two readings
- Emissivity is adjustable from 0.1 to 1.00 in increments of 0.01
- Probe range (supplied with unit): -40 to 250°C continuous or 300°C short-term; uses all Type-K thermocouples
- Supplied: batteries, Type-K beaded sensor, Traceable® Certificate

Cat. No.	Measurement	Range	Resolution	Accuracy	Field of view
37803-95	Infrared	-76 to 1,022°F (-60 to 550°C)	0.1°	±2% of reading or ±2°C whichever is greater	12:1
	Type-K Probe	-83 to 2,552°F (-64 to 1,400°C)			n/a

For additional Type-K probes, see page 29.



### Traceable™ Certificate

To assure accuracy an individually-numbered Traceable™ Certificate which assures accuracy from an ISO/IEC 17025:2005 (1750.01) calibration laboratory accredited by A2LA. It indicates traceability of measurements to the SI units through NIST or other recognized national measurement institutes (NMI) that are signatories to the CIPM Mutual Recognition Agreement.



## Traceable® Noncontact Temperature Indicator

**Internal laser target guide and Type-K compatibility make this infrared gun a 2-for-1 lab powerhouse**

- Great for use in food preparation, clean rooms, electronics-where accuracy is imperative
- Emissivity is adjustable from 0.20 to 1.00
- HOLD functions allows time for user to record temperature readings, °F/°C switchable
- Memory function stores MIN/MAX readings
- Supplied: battery, Type-K beaded probe, carrying case, Traceable® Certificate

Cat. No.	Measurement	Range	Resolution	Accuracy	Field of view
98767-42	Infrared	-4.0 to 752°F (-20 to 400°C)	0.1°	±3% of reading or ±3°C	7:1
	Type-K	-148.0 to 2,372.0°F (-100.0 to 1,300.0°C)		±(1% + 2°F) or ±(1% + 1°C)	n/a

For additional Type-K probes, see page 29.



## Traceable® Infrared Thermometer Gun

**High-performance, easy-to-operate infrared gun has incredible 50:1 field of view**

- Instant, less-than-a-second temperature readings of any surface, °F/°C switchable
- Ideal for food preparation, pharmaceuticals, field use, electronics, and safety inspection
- Features minimum/maximum memory, average readings, and high/low audible alarms (Cat. No 37803-97)
- Supplied: battery, carrying case, Traceable® Certificate

Cat. No.	Infrared Range	Resolution	Accuracy	Field of view	Emissivity
37803-96	-58 to 1,832°F (-50 to 1,000°C)	0.1°	±1.5% + 2°C between -20 to 200°C	50:1	Fixed at 0.95
37803-97					Adjustable from 0.10 to 1.00 in 0.01 steps

37803-96



## Traceable® Infrared Thermometer with Memories/Alarm

**Innovative, 9-memory infrared unit with alarm meets every touchless temperature reading need**

- Nine memory sets of 4 values (MIN, MAX, ΔT, and AVG) are available and ready for recall
- Distinctive audible alarm sounds when temperatures rise above or drop below user-set limits
- Compact, 5-key unit takes temperature readings in less than 1 second, °F/°C switchable
- Emissivity is adjustable from 0.3 to 1.0
- Supplied: battery, wrist strap, soft carrying case, Traceable® Certificate

Cat. No.	Infrared Range	Resolution	Accuracy	Field of view
98767-46	0 to 788°F (-20 to 420°C)	1°	2% of reading or ±2°C	8:1



## Traceable® Infrared Thermometer with wristband

### Laser beam permits perfect sample target sighting

- One button design makes operation easy, °F/°C switchable
- Emissivity is 0.05 to 1.00 in .01 steps
- Supplied: battery, wristband, Traceable® Certificate

Cat. No.	Infrared Range	Resolution	Accuracy	Field of view
98767-49	-67 to 482°F (-55 to 250°C)	0.1°	±1°C + 2%	6:1



## Traceable® Infrared Thermometer with pocket clip

### Easy-to-carry design is ideal for blood bank labs

- Simple point-and-shoot operation, °F/°C switchable
- Unit reads both Fahrenheit and Celsius of any surface—solids, semi-solids, and liquids
- Fixed emissivity is precisely set at 0.95
- Supplied: battery, lanyard, pocket-clip, key-chain, Traceable® Certificate

Cat. No.	Infrared Range	Resolution	Accuracy	Field of view
98767-48	-27.0 to 428.0°F (-33.0 to 220.0°C)	0.1° (-9.9 to 199.9), 1° otherwise	±1°C + 2%	1:1



## Traceable® Mini-IR™ Thermometer

### Point-and-read, non-invasive IR mini-thermometer is super-reliable lab helper

- LOCK mode allows for 60 minutes of continuous readings without holding key down, °F/°C switchable
- Simple-to-set unit records minimum-only or maximum-only results for constantly changing targets
- Fixed emissivity is precisely set at 0.95
- Supplied: battery, key-chain, Traceable® Certificate

Cat. No.	Infrared Range	Resolution	Accuracy	Field of view
98767-47	-7 to 230°F (-22 to 110°C)	0.1°	±1°C between 15.0 to 40.0°C; ±1.5°C elsewhere	1:1



## Traceable® Disposable Temperature Strip-Chart Recorder

### Provides a permanent record—easy to read, copy, fax, scan, file

- Disposable recorder with broad temperature range delivers °F/°C accuracy on same chart
- Solid-state, battery-driven, quartz-crystal-controlled motor makes operation error-free
- Temperature sensor is bimetallic and has an accuracy rate of better than 1 second per day
- Supplied: battery, chart paper, Traceable® Certificate

Cat. No.	Range	Accuracy	Records
49021-00	-20 to 100°F (-28 to 38°C)	±2°F (±1°C)	10 days



### Traceable™ Certificate

To assure accuracy an individually-numbered Traceable™ Certificate which assures accuracy from an ISO/IEC 17025:2005 (1750.01) calibration laboratory accredited by A2LA. It indicates traceability of measurements to the SI units through NIST or other recognized national measurement institutes (NMI) that are signatories to the CIPM Mutual Recognition Agreement.

## Timer Selection Chart

Cat. No.	Page No.	Traceable® Certificate Supplied	Accuracy	Maximum Time	Resolution	Channels	Battery	Clock	Memory	Features
94411-10	35	Yes	0.00%	100 Hours	1 Second	3	1105	Yes	Yes	Continuous alarm
08649-10	35	Yes	0.01%	100 Hours	1 Second	4	1039	Yes	Yes	4-channel countdown/up
06449-08	35	Yes	0.01%	100 Hours	1 Second	4	1039	Yes	Yes	Personalize your timer
94461-27	35	Yes	0.01%	100 Hours	1 Second	4	1039	Yes	Yes	Easy to program
94460-60	36	Yes	0.00%	10 Hours	1 Second	3	1111	No	Yes	3 timing channels
94461-23	36	Yes	0.01%	100 Hours	1 Second	3	1039	Yes	Yes	3-line display
94461-15	36	Yes	0.01%	100 Minutes	1 Second	1	1105	No	Yes	Automatic memory
94461-16	36	Yes	0.01%	100 Hours	1 Second	2	1105	No	Yes	Large display
94440-00	36	Yes	0.01%	20 Hours	1 Second	3	1105	Yes	Yes	Triple-display
94461-22	37	Yes	0.01%	24 Hours	1 Second	2	1039	Yes	Yes	2-channel countdown/up
94440-10	37	Yes	0.01%	24 Hours	1 Second	2	1105	Yes	Yes	Jumbo-display black
98766-77	37	Yes	0.01%	24 Hours	1 Second	2	1105	Yes	Yes	Jumbo-display white
94461-31	37	Yes	0.01%	24 Hours	1 Second	2	1039	Yes	Yes	Ultra-compact
98766-80	37	Yes	0.01%	10 Hours	1 Second	1	1105	No	Yes	Vibrates when times up
94461-05	38	Yes	0.01%	24 Hours	1 Second	1	1111	Yes	Yes	Innovative design
94461-01	38	Yes	0.01%	100 Minutes	1 Second	1	1105	No	Yes	Jumbo digits
98766-76	38	Yes	0.01%	24 Hours	1 Second	1	1039	Yes	Yes	Repeat countdown and talking
98766-78	38	Yes	0.01%	100 Minutes	1 Second	1	1105	No	Yes	Automatic memory
94461-07	38	Yes	0.01%	100 Hours	1 Second	1	1105	No	Yes	Extra-extra-large digits
08642-42	38	Yes	0.01%	100 Minutes	1 Second	1	1039	No	No	Numbered Keys
94460-04	39	Yes	0.01%	100 Hours	1 Second	1	1039	Yes	Yes	Numbered keys
94416-20	39	Yes	0.01%	10 Hours	1 Second	1	1105	Yes	Yes	Clock, timer, stopwatch
94461-26	39	Yes	0.01%	24 Hours	1 Second	1	1039	No	Yes	Memory
94461-32	39	Yes	0.01%	24 Hours	1 Second	1	1039	Yes	Yes	Compact all-in-one
94460-00	39	Yes	0.01%	100 Minutes	1 Second	1	1039	No	Yes	Easy to use
94461-24	40	Yes	0.01%	20 Hours	1 Minute	1	1105	No	No	Easy 3-key operation
94461-28	40	Yes	0.01%	100 Minutes	1 Second	1	1105	No	Yes	Memory
94411-01	40	Yes	0.01%	9999 Minutes	1 Second	1	1105	No	Yes	Times up, flashing LED
94460-64	40	Yes	0.01%	24 Hours	1 Second	1	1039	No	Yes	Compact timer with clock
98766-79	40	Yes	0.01%	100 Minutes	1 Second	1	1039	No	Yes	Removable suction-cup
94411-35	41	Yes	0.01%	20 Hours	1 Minute	1	1039	No	Yes	Key-chain
08610-31	41	Yes	0.01%	100 Hours	1 Second	1	1039	No	No	Key-chain
08610-32	41	Yes	0.01%	100 Hours	1 Second	1	1039	No	Yes	Clips to everything
94411-40	41	Yes	0.01%	20 Hours	1 Minute	1	1104	No	No	Small-compact, Key-chain
98766-10	42	No	n/a	60 Minutes	1 Minute	n/a	n/a	No	No	Mechanical
94415-44	42	No	n/a	60 Minutes	1 Minute	n/a	n/a	No	No	Magnet and lanyard
94415-46	42	No	n/a	60 Minutes	1 Minute	n/a	n/a	No	No	Lanyard and key-chain
94461-55	42	Yes	0.01%	100 Minutes	1 Second	1	1039	No	Yes	Water-resistant

## Traceable® Four-Channel Alarm Timer

### The lab's most popular timer

- Features: count up/down, memory recall, alarm, 12/24 hour clock
- Massive 1.9 cm high display allows viewing from across the lab
- Remarkable memory returns display to previously programmed countdown time at the touch of a button
- High decibel alarm signals for 1 minute and may be silenced manually
- Supplied: clip, stand, magnet, battery, Traceable® Certificate

Cat. No.	Timing Capacity	Resolution	Accuracy	Channels
08649-10	99 hours, 59 minutes, 59 seconds	1 second	0.01%	4



## Traceable® Multi-Coloured™ Timer

### Show your distinct style with customized bold colours—a fresh look for lab

- Features: count up/down, memory recall, alarm, 12/24 hour clock
- 3-bright colourful supplied frames permit personalisation of timer
- Unique memory returns channel to previously programmed setting at touch of a key
- Supplied: bench stand, magnetic back, battery, Traceable® Certificate

Cat. No.	Timing Capacity	Resolution	Accuracy	Channels
06449-08	99 hours, 59 minutes, 59 seconds	1 second	0.01%	4



## Traceable® 100-Hour Timer

### Lab workhorse provides 100 hour up/down timing on four channels

- Features: counts down/up, alarm, clock
- TIME IS UP message flashes on display during count-up mode
- Alarms sound for 60 seconds and may be silenced manually
- Supplied: battery, flip-open stand, clip, Traceable® Certificate

Cat. No.	Timing Capacity	Resolution	Accuracy	Channels
94461-27	99 hours, 59 minutes, 59 seconds	1 second	0.01%	4



## Traceable® Three-Channel Alarm Timer

### Innovative timer has programmable alarm with adjustable volume control for any environment

- Features: count up/down, memory recall, alarm, clock, adjustable alarm duration/volume
- Triple display shows 3 different times at once; tests can be started individually or simultaneously
- Adjustable volume alarm can be set to sound for 60 seconds or to sound continuously until cleared
- Supplied: battery, Traceable® Certificate

Cat. No.	Timing Capacity	Resolution	Accuracy	Channels
94411-10	99 hours, 59 minutes, 59 seconds	1 second	0.001%	3



### Traceable™ Certificate

To assure accuracy an individually-numbered Traceable™ Certificate which assures accuracy from an ISO/IEC 17025:2005 (1750.01) calibration laboratory accredited by A2LA. It indicates traceability of measurements to the SI units through NIST or other recognized national measurement institutes (NMI) that are signatories to the CIPM Mutual Recognition Agreement.



## Traceable® Original Lab Timer

Three-channel lab staple gives years and years of reliable service

- Features: countdown, distinct alarm and display indicator per channel
- Simple-to-use timer is ideal for quality-control and experimental requirements
- Alarms sound for 60 seconds or may be turned off manually
- Supplied: batteries, Traceable® Certificate

Cat. No.	Timing Capacity	Resolution	Accuracy	Channels
94460-60	9 hours, 59 minutes, 59 seconds	1 second	0.001%	3



## Traceable® Triple-Display Timer

Triple-line display makes easy work of simultaneously timing three events

- Features: count up/down, time in/out, memory, alarm, stopwatch, 12/24-hour clock
- Unique memory returns channel to previously programmed setting at touch of a key
- When zero is reached, distinct alarm sounds and timer counts up showing time elapsed since alarm
- Supplied: battery, magnetic back, Traceable® Certificate

Cat. No.	Timing Capacity	Resolution	Accuracy	Channels
94440-00	19 hours, 59 minutes, 59 seconds	1 second	0.01%	3



## Traceable® Three-Line Alarm Timer

Unique, 3-channel timer is perfect for use in all count up/down timing combinations

- Features: alarm for each channel sounds for 60 seconds, count up/down, memory recall, clock
- Display: 3-line LCD with 0.9 cm high digits
- Supplied: clip, stand, magnet, battery, Traceable® Certificate

Cat. No.	Timing Capacity	Resolution	Accuracy	Channels
94461-23	99 hours, 59 minutes, 59 seconds	1 second	0.01%	3



94461-16

## Traceable® Flashing LED Alert Big-Digit Alarm Timer

Big-Digit Timer has it all—adjustable alarm volume, flashing led, superb accuracy

- Features: count up/down, flashing LED, adjustable volume
- Green light flashes every second after timing begins; red LED indicator flashes when zero is reached and shows time elapsed since alarm
- Adjustable volume: high decibel, low decibel, or off for silent visual flashing LED operation
- Supplied: batteries, magnetic back, flip-open stand/ clip, opening for lanyard, Traceable® Certificate

Cat. No.	Timing Capacity	Resolution	Accuracy	Channels
94461-16	99 hours, 59 minutes, 59 seconds	1 second	0.01%	2
94461-15	99 minutes, 59 seconds			1

## Traceable® Nano™ Timer

### Small design—large display

- Features: countdown alarm, time/stopwatch (count-up) time, or 12/24 hour clock
- Two-channel memory automatically returns display to original programmed time
- Supplied: battery, clip/stand, magnet on back, Traceable® Certificate

Cat. No.	Timing Capacity	Resolution	Accuracy	Channels
94461-31	23 hours, 59 minutes, 59 seconds	1 second	0.01%	2



## Traceable® Vibrating Timer

### Countdown timer vibrates when time's up; quietly nudges you when hearing a buzzer is impossible

- Select either vibrating or an audible alarm with the flip of a switch
- Individually numbered keys make setting time fast and easy
- Automatic Bounceback™ Memory for repetitive timing
- Counts up after time is up indicating elapsed time since alarming
- Supplied: magnetic back, stand/spring-clip, Traceable® Certificate, battery, and opening for lanyard

Cat. No.	Timing Capacity	Resolution	Accuracy	Channels
98766-80	9 hours, 99 minutes, 99 seconds	1 second	0.01%	1



## Traceable® Jumbo Timer

### Read display from any angle

- Features: count up/down, time in/out, memory, alarm, 12/24 hour clock, stopwatch
- Adjustable jumbo display from 90° to 180°
- When zero is reached, distinct alarm sounds and timer counts up showing time elapsed since alarm
- Supplied: battery, stand, wall-mount, Traceable® Certificate

Cat. No.	Timing Capacity	Resolution	Accuracy	Channels	Unit colour
94440-10	23 hours, 59 minutes, 59 seconds	1 second	0.01%	2	Black
98766-77					White



94440-10

## Traceable® Two-Memory Timer

### Popular bench-mate with memory is ideal for repetitive quality control tests and requirements

- Features: count up/down, time in/out, memories, 12/24 hour clock
- Each channel's memory feature recalls previously programmed time and allows same tests to be repeated
- When zero is reached, distinct alarm sounds and timer counts up showing time elapsed since alarm
- Supplied: battery, magnet, flip-open stand/clip, Traceable® Certificate

Cat. No.	Timing Capacity	Resolution	Accuracy	Channels
94461-22	23 hours, 59 minutes, 59 seconds	1 second	0.01%	2



## Traceable™ Certificate

To assure accuracy an individually-numbered Traceable™ Certificate which assures accuracy from an ISO/IEC 17025:2005 (1750.01) calibration laboratory accredited by A2LA. It indicates traceability of measurements to the SI units through NIST or other recognized national measurement institutes (NMI) that are signatories to the CIPM Mutual Recognition Agreement.



## Traceable® Extra, Extra Large Digit Countdown Timer

**Extreme 3 cm digit height allows viewing from 60 feet**

- Features: count up/down, memory, alarm, stopwatch
- Unique memory returns channel to previously programmed setting at touch of a key
- Supplied: hanger, clip, easel bench stand, magnetic back, battery, Traceable® Certificate

Cat. No.	Timing Capacity	Resolution	Accuracy	Channels
94461-07	99 minutes, 59 seconds	1 second	0.01%	1



## Traceable® GIANT-DIGIT™ Countdown Timer

**View 3.4 cm giant size digits on your bench timer from across lab**

- Features: countdown/up, memory, stopwatch mode
- Unique memory returns channel to previously programmed setting at touch of a key
- Supplied: stand, magnetic back, battery, Traceable® Certificate

Cat. No.	Timing Capacity	Resolution	Accuracy	Channels
94461-01	99 minutes, 59 seconds	1 second	0.01%	1



## Traceable® Lab-Top Timer

**Innovative display designed to be clearly seen from any angle**

- Features: count down/up, memory, clock, large keys
- In countdown mode when unit reaches zero, alarm sounds and timer counts up showing time elapsed since alarm; TIME'S UP flashes on display
- MEMORY stores most recently programmed time and provides quick access for repetitive tasks
- Supplied: battery, Traceable® Certificate

Cat. No.	Timing Capacity	Resolution	Accuracy	Channels
94461-05	23 hours, 59 minutes, 59 seconds	1 second	0.01%	1



## Traceable® Alarm Timer/Stopwatch

**Numbered, quick-set keys make programming timer a breeze**

- Features: count up/down, time-out, alarm
- Numbered keys make it a breeze to set countdown time
- Supplied: clip, stand, magnet, opening for lanyard, battery, Traceable® Certificate

Cat. No.	Timing Capacity	Resolution	Accuracy	Channels
08642-42	99 minutes, 99 seconds	1 second	0.01%	1



## Traceable® 99M/59S Timer

**Jumbo-digit, light weight, portable lab partner is ideal for repetitive countdown tests**

- Features: count up/down, memory, large keys, extra large digits, alarm
- Unique memory resets display to last programmed time for quick repeat of frequent, routine tests
- Supplied: battery, magnet, flip-open stand, clip, Traceable® Certificate

Cat. No.	Timing Capacity	Resolution	Accuracy	Channels
98766-78	99 minutes, 59 seconds	1 second	0.01%	1

## Traceable® Memory Timer

### Unique timer counts down with an alarm and remembers setting

- Unique memory returns display to previously programmed time at touch of a key
- Loud-beeping alarm sounds for 60 seconds or may be turned off manually
- Supplied: battery, clip/stand, magnetic back, Traceable® Certificate

Cat. No.	Timing Capacity	Resolution	Accuracy	Channels
94461-26	23 hours, 59 minutes to 1 minute	1 minute	0.01%	1



## Traceable® Talking Timer

### Talks, counts down, counts up and tells time with Traceable® precision

- Timer speaks in English announcing time remaining, time elapsed since alarm was triggered, and time of day
- Six distinct alarm sounds make this timer ideal for purchasing multiple units and setting each one to a different alarm sound
- Supplied: magnetic back, flip-open stand, spring fastener, opening for lanyard, battery, Traceable® Certificate

Cat. No.	Timing Capacity	Resolution	Accuracy	Channels
98766-76	23 hours, 59 minutes, 59 seconds	1 second	0.01%	1



## Traceable® Advanced Memory Timer

### Timer remembers last time set, counts down, alarms, and counts up

- Features: count-up/count-down/clock
- Clock channel features time of day to the second with AM/PM indicators
- Remarkable memory returns display to the previously programmed countdown time at the touch of a key
- Visual alarm displays TIME'S UP
- Supplied: clip, magnet, flip-open stand, battery, Traceable® Certificate

Cat. No.	Timing Capacity	Resolution	Accuracy	Channels
94461-32	23 hours, 59 minutes, 59 seconds	1 second	0.01%	1



## Traceable® Triple-Purpose Timer

### Displays countdown alarm time, stopwatch time, and time

- Features: big-digits, countdown alarm time, stopwatch, 12/24-hour clock
- Full 0-9 keyboard makes entering times exceptionally fast
- Supplied: magnetic back, battery, Traceable® Certificate

Cat. No.	Timing Capacity	Resolution	Accuracy	Channels
94416-20	9 hours, 59 minutes, 59 seconds	1 second	0.01%	1



## Traceable® Fingertip Timer

### Quick-to-program, countdown timer delivers error-free operation for any lab test

- Features: count down, time in/out, alarm
- Impressive memory remembers most-recently-programmed setting for recurring lab experiments
- Supplied: battery, magnetic back, Velcro®, Traceable® Certificate

Cat. No.	Timing Capacity	Resolution	Accuracy	Channels
94460-00	99 minutes, 59 seconds	1 second	0.01%	1



### Traceable™ Certificate

To assure accuracy an individually-numbered Traceable™ Certificate which assures accuracy from an ISO/IEC 17025:2005 (1750.01) calibration laboratory accredited by A2LA. It indicates traceability of measurements to the SI units through NIST or other recognized national measurement institutes (NMI) that are signatories to the CIPM Mutual Recognition Agreement.



## Traceable® Waterproof/Steam-proof Timer

### Affix this timer anywhere using removable suction cup

- Features: countdown/up, memory recall, waterproof, steamproof
- Ideal for use in wash-down areas, wet labs, manufacturing plants or field work
- Impressive memory remembers most-recently-programmed setting for recurring lab experiments
- Supplied: stand, removable suction-cup, battery, Traceable® Certificate

Cat. No.	Timing Capacity	Resolution	Accuracy	Channels
98766-79	99 minutes, 59 seconds	1 second	0.01%	1



## Traceable® Instant-Recall Memory Timer

### Delivers accurate results for lab's demanding countdown requirements

- Features: count down, time in/out, memory
- Intuitive, 3-key programming make this all-time-favorite perfect for delivering countdown results
- Valuable time-out function permits unlimited time-outs without having to reset timer
- Supplied: battery, flip-open stand, clip, magnetic back, opening for lanyard, Traceable® Certificate

Cat. No.	Timing Capacity	Resolution	Accuracy	Channels
94461-28	99 minutes, 59 seconds	1 second	0.01%	1



## Traceable® LCD Timer

### Compact, 6-digit-display multi-tasker offers easy count up/down timing

- Features: count up/down, time in/out, memory, clock
- When countdown timing reaches zero, TIMES UP flashes on display, alarm sounds, and timer counts up showing time elapsed since alarm
- Supplied: battery, flip-open stand, clip, magnet, Traceable® Certificate

Cat. No.	Timing Capacity	Resolution	Accuracy	Channels
94460-64	23 hours, 59 minutes, 59 seconds	1 second	0.01%	1



## Traceable® QC Timer

### Simple 3-key use and large digits for easy viewing

- Features: count up/down
- When countdown timing reaches zero, TIMES UP flashes on display, alarm sounds, and timer counts up showing time elapsed since alarm
- Supplied: battery, flip-open stand, clip, magnet, Traceable® Certificate

Cat. No.	Timing Capacity	Resolution	Accuracy	Channels
94461-24	19 hours, 59 minutes to 1 minute	1 minute	0.01%	1



## Traceable® Visual Alarm Timer (9,999m)

### Memory resets to last programmed time—ideal for repetitive tests

- Features: count up/down, time in/out, alarm
- Lightweight, mini-size, 3-key operation provides fast, user-friendly, reliable service
- Extended time makes this unit ideal for long test runs
- Supplied: battery, stand, magnet, Traceable® Certificate

Cat. No.	Timing Capacity	Resolution	Accuracy	Channels
94411-01	9,999 minutes to zero	1 second to 1 minute	0.01%	1



## Traceable® Clip-It™ Timer

### Perennial favourite multi-tasking timer attaches to any lab surface

- Features: count up/down, alarm
- Helpful memory saves last programmed setting for quick recall—useful for repetitive timing events
- Supplied: clip, magnet, opening for lanyard, battery, Traceable® Certificate

Cat. No.	Timing Capacity	Resolution	Accuracy	Channels
08610-32	99 hours, 59 minutes, 59 seconds	1 second	0.005%	1



## Traceable® Key-Chain Timer

### Cleverly-designed, portable timekeeper travels anywhere

- Features: key-chain, count up/down, time in/out, alarm, stopwatch
- In stopwatch mode, timer counts up from 1 second to 20 minutes then rolls over and counts up again
- At zero, alarm sounds for 60 seconds and timer shuts off automatically
- Supplied: battery, key-chain, Traceable® Certificate

Cat. No.	Timing Capacity	Resolution	Accuracy	Channels
94411-35	19 hours, 59 minutes (countdown) 19 minutes, 59 seconds (count up)	1 minute (countdown) 1 second (count up)	0.01%	1



## Traceable® Touch Timer

### Quick-to-set, countdown timer gets job done

- Features: countdown, oversized keys, alarm, key-chain
- Mini, postage-stamp-size, feather-weight timer fits in smallest pockets or anywhere in lab
- When zero is reached, beeping alarm sounds for 20 seconds or may be turned off manually
- Supplied: battery, key-chain, Traceable® Certificate

Cat. No.	Timing Capacity	Resolution	Accuracy	Channels
94411-40	19 hours 59 minutes	1 minute	0.01%	1



## Traceable® Digital Timer Plus

### Handiest timer ever designed clips to any surface

- Features: count up/down, time in/out, key-chain, alarm
- When zero is reached, alarm sounds for 60 seconds or may be silenced manually
- Supplied: key-chain, clip, magnet, opening for lanyard, battery, Traceable® Certificate

Cat. No.	Timing Capacity	Resolution	Accuracy	Channels
08610-31	99 hours, 59 minutes, 59 seconds	1 second	0.005%	1



### Traceable™ Certificate

To assure accuracy an individually-numbered Traceable™ Certificate which assures accuracy from an ISO/IEC 17025:2005 (1750.01) calibration laboratory accredited by A2LA. It indicates traceability of measurements to the SI units through NIST or other recognized national measurement institutes (NMI) that are signatories to the CIPM Mutual Recognition Agreement.



## Traceable® Water-Resistant, Flashing Timer

Perfect timer for wet labs, wash-down areas, manufacturing plants and field use

- Features: water-resistant, splash proof, count up/countdown, alarm, lanyard
- Bright LED flashes at zero to indicate alarm is sounding
- Infinite timeouts
- Audible alarm sounds for 1 minute or can be manually turned off
- Supplied: lanyard, suction cup, magnet, Velcro®, battery, Traceable® Certificate

Cat. No.	Timing Capacity	Resolution	Accuracy	Channels
94461-55	99 minutes, 59 seconds	1 second	0.01%	1



## Quick-Timer™

Easy-to-read, and use—no keys, no batteries

- Features: count down, key-chain, lanyard
- Loud five-second bell rings at zero
- Turning the pointer to the desired countdown automatically winds timer; indicating pointer always show exact time remaining
- Supplied: key-chain, lanyard

Cat. No.	Timing Capacity	Resolution	Description
94415-44	0 to 60 minutes	1 minute	blue/white, with magnet on back, diameter 5.7 x 2.5 cm, weight is 85 g



## SX-Timer™

Easy-to-read, and use—no keys, no batteries

- Features: count down, key-chain, lanyard
- Loud five-second bell rings at zero
- Turning the pointer to the desired countdown automatically winds timer; indicating pointer always show exact time remaining
- Supplied: key-chain, lanyard

Cat. No.	Timing Capacity	Resolution	Description
94415-46	0 to 60 minutes	1 minute	translucent blue/white, diameter 5.7 x 2.5 cm, weight 63.7 g



## 60-Minute Interval Timer

Stands on lab bench at a viewing angle

- Features: count down, no batteries
- Bell sounds at end of cycle

Cat. No.	Timing Capacity	Resolution	Size
98766-10	0 to 60 minutes	1 minute	9.5 x 9.5 x 5 cm

## Traceable® Jumbo-Digit Compact Radio-Controlled Atomic Clock (UK)

### Jumbo sized 9.5 cm clock digits in a compact case

- Features: radio signal from VT Communications of Anthorn, Cambria United Kingdom atomic clock automatically sets correct date/time; calendar displays month/date and day
- Temperature range: 23 to 122°F (–5 to 50°C); resolution: 0.1°; accuracy: ±1°C
- Supplied: wall mount, bench stand, batteries, Traceable® Certificate



Cat. No.	Time feature	Resolution	Accuracy	Size/Weight
98766-11	12/24 hours	1 second	1/10,000 second	22.8 x 12.7 x 3.2 cm; 425.2 g

## Traceable® Jumbo-Digit Compact Radio-Controlled Atomic Clock (Europe)

### Jumbo sized 9.5 cm clock digits in a compact case

- Features: radio signal from Physikalisch-Technische Bundesanstalt (PTB) of Mainflingen, Germany atomic clock automatically sets correct date/time; calendar displays month/date and day
- Temperature range: 23 to 122°F (–5 to 50°C); resolution: 0.1°; accuracy: ±1°C
- Supplied: wall mount, bench stand, batteries, Traceable® Certificate



Cat. No.	Time feature	Resolution	Accuracy	Size/Weight
98766-12	12/24 hours	1 second	1/10,000 second	22.8 x 12.7 x 3.2 cm; 425.2 g

## Traceable® Calendar/Thermometer/Clock

### Clock has stylish 2-tone colour and slim silhouette

- Features: time, date/day, temperature
- Supplied: battery, wall-mount, Traceable® Certificate



Cat. No.	Feature parameters	Resolution	Accuracy	Size/Weight
08610-26	Time: 12/24 hour clock	1 minute	0.01%	23.5 x 25.4 x 2.5 cm, 538.6 grams
	Temp: –5 to 50°C	0.1°	n/a	

## Traceable® Clock/Thermometer/Humidity

### Displays time, temperature, and humidity on wall or lab bench

- Features: analogue time, temperature; humidity
- Crisp reading dials and bright orange sweeping second hand provides superior visibility
- Low-profile slim design has impact-resistant ABS case
- Supplied: battery, wall mount screw, Traceable® Certificate



Cat. No.	Feature parameters	Resolution	Accuracy	Size/Weight
94460-35	Time: AM/PM clock	1 second	0.01%	Clock dial: 22.8 cm Temp/Humidity dials: 7.6 cm Overall: 31.7 x 27.9 x 2.5 cm; 737 grams
	Temp: –37 to 47°C	2°C	n/a	
	Humidity: 8 to 92%	2%	n/a	

### Traceable™ Certificate

To assure accuracy an individually-numbered Traceable™ Certificate which assures accuracy from an ISO/IEC 17025:2005 (1750.01) calibration laboratory accredited by A2LA. It indicates traceability of measurements to the SI units through NIST or other recognized national measurement institutes (NMI) that are signatories to the CIPM Mutual Recognition Agreement.



## Traceable® Waterproof Indoor/Outdoor Clock

### Ideal for washdown areas and harsh environments

- Features: O-ring sealed, waterproof ABS impact-resistant case, displays °F/°C simultaneously
- Supplied: wall mount, batteries, Traceable® Certificate

Cat. No.	Feature parameters	Resolution	Accuracy	Size/Weight
08610-05	Time: AM/PM	1 second	0.01%	17.8 cm diameter, dial: 12.7 cm; 340 grams
	Temperature: -4 to 102°F (-20 to 40°C)	2°	±1.5°C	



## Traceable® Clock Thermometer/Humidity

### Bright, sweeping hands display time, temperature, and humidity on wall

- Features: analogue time, temperature, humidity
- Supplied: battery, wall mount screw, Traceable® Certificate

Cat. No.	Feature parameters	Resolution	Accuracy	Size/Weight
08610-15	Time: AM/PM clock	1 second	0.01%	31.8 cm diameter, 453.5 grams
	Temperature: -32 to 130°F (-20 to 55°C)	2°C/10°F	n/a	
	Humidity: 0 to 100%	2%	n/a	



## Traceable® Wall Clock

### Attractive 30 cm wall clock tell time of day to second

- Features: water/dust resistant sealed case, bright sweeping second hand
- Supplied: battery, wall mount, Traceable® Certificate

Cat. No.	Time feature	Resolution	Accuracy	Size/Weight
94460-50	AM/PM clock	1 second	0.01%	31.8 cm diameter, 453 g



## Traceable® Stick-it™ Mini-Clock

### Small size makes mini-clock perfect for work area

- White timing hands give superior visibility
- Flat bottom permits standing on shelf, desk or bench
- Supplied: Velcro®, double-sided tape, battery, Traceable® Certificate

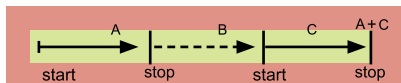
Cat. No.	Time feature	Resolution	Accuracy	Size
08610-20	AM/PM clock	1 second	0.013%	4 cm diameter x 0.7 cm

## Stopwatch Timing Features

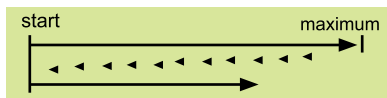
**A Single Action Timing:** Pressing start key begins timing, a second press stops clock.



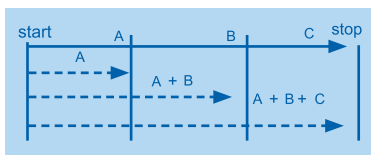
**B Time-out/Time-in:** Records total elapsed time with any number of "time-outs". Permits stopping timer for "off" periods, holds reading where stopped, and starts again from that point.



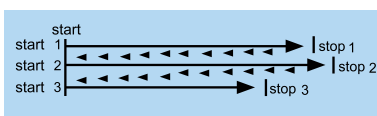
**C Continuous Timing:** Digits offer a continuous display. When maximum display is reached, digits rollover to zero and automatically begin timing again. Permits timing for hours, days, or weeks.



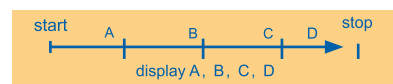
**D Cumulative Split:** Freezes display for partial event times while internal clock continues to run and measure total elapsed time since starting timer.



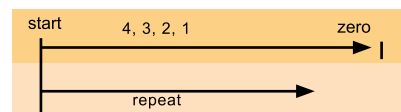
**E Interval Split:** Yields a readout of each individual time increment of a connected series of events. Each press of key displays time interval since previous press.



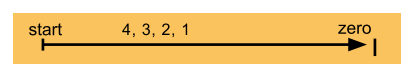
**F Memories:** Capture and store up to six or eight separate times and display them while timing or after event is over. Never look away from a lab test-even to take notes.



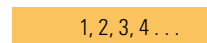
**G Countdown I (repeat):** An alarm sounds at zero, program automatically repeats, counts down, and alarms again. It continues this sequence until stopped.



**H Countdown II:** Allows setting unit to countdown. An alarm sounds at zero.



**I Sample Counter:** Box on display shows sample number for each split taken.



## Stopwatch Selection Chart

Cat. No.	Page No.	Traceable® Certificate Supplied	Accuracy	Timing Capacity	Resolution	Timing Functions (see above)	Features
98766-02	46	Yes	0.001%	10 Hours	1/100 Second	A, B, C, D, E, F, G, H, I	60 memories
98766-03	47	Yes	0.0005%	10 Hours	1/100 Second	A, B, C, D, E	High accuracy
98766-04	46	Yes	0.0005%	20 Hours	1/100 Second	A, B, C, D, E, F	Triple-display, decimal timing, and 500 memories
98766-05	47	Yes	0.0005%	10 Hours	1/100 Second	A, B, C, D, E, F	Dual display
94460-15	48	Yes	0.01%	99 Hours	1/100 Second	A, B, C, D	Pre-programmed countdown
98766-06	47	Yes	0.001%	24 Hours	1/100 Second	A, B, C, D	Extra-tough construction
94460-55	47	Yes	0.01%	24 Hours	1/100 Second	A, B, C, D, E	Water-and-shock resistant
94460-06	48	Yes	0.01%	24 Hours	1/100 Second	A, B, C, D	Disposable
98766-07	47	Yes	0.01%	24 Hours	1/100 Second	A, B, C, D, E	Extra-tough construction
94461-21	46	Yes	0.01%	24 Hours	1/100 Second	A, B, C, D	Big digits
98766-08	46	Yes	0.001%	10 Hours	1/100 Second	A, B, C, D, E, F, G, H, I	8 memories
94460-28	47	Yes	0.001%	24 Hours	1/100 Second	A, B, C, D	Jumbo digits
98766-09	46	Yes	0.001%	10 Hours	1/100 Second	A, B, C, D, E, F, G, H, I	300 memories
98766-13	48	Yes	0.001%	10 Hours	1/1,000 Second	A, B, D, E	Bench top

### Traceable™ Certificate

To assure accuracy an individually-numbered Traceable™ Certificate which assures accuracy from an ISO/IEC 17025:2005 (1750.01) calibration laboratory accredited by A2LA. It indicates traceability of measurements to the SI units through NIST or other recognized national measurement institutes (NMI) that are signatories to the CIPM Mutual Recognition Agreement.



## Traceable® 300-Memory Stopwatch

### Three-line display shows running time, cumulative-split, and interval-split

- Features: water-resistant, 300 memories, count up/down, repetitive programmable countdown alarm, alarm, clock
- Stopwatch functions: single-action, time in/out, continuous timing, cumulative split, interval split
- Interval split shows longest, shortest and average times
- Supplied: detachable clip, battery, lanyard, Traceable® Certificate

Cat. No.	Timing Capacity	Resolution	Accuracy	Timing Functions
98766-09	9 hours, 59 minutes, 59 seconds, 99 hundredths	0.01 second	0.001%	A, B, C, D, E, F, G, H, I



## Traceable® 60-Memory Stopwatch

### Extra smart 10-hour time keeper recalls 60 events

- Features: 60 memories, alarm, time, date, day of week
- Stopwatch functions: single action timing, time in/out, continuous timing, cumulative split, interval split, countdown I and II, auto-repeat
- Supplied: battery, lanyard, Traceable® Certificate

Cat. No.	Timing Capacity	Resolution	Accuracy	Timing Functions
98766-02	9 hours, 59 minutes, 59 seconds	1 second	0.001%	A, B, C, D, E, F, G, H, I



## Traceable® Stopwatch/Repeat Timer

### Universal stopwatch provides repeat function of countdown alarm timing

- Features: 8 memories, chronograph, pacer, alarm
- Display count box shows how many times cycle has been repeated
- Stopwatch functions: single action, time in/out, cumulative split, interval split, continuous timing
- Supplied: battery, lanyard, Traceable® Certificate

Cat. No.	Timing Capacity	Resolution	Accuracy	Timing Functions
98766-08	9 hours, 59 minutes, 59 seconds, 99 hundredths	0.01 second	0.001%	A, B, C, D, E, F, G, H, I



## Traceable® Big-Digit Stopwatch/Chronograph

### Utility unit has complete stopwatch functions and full chronograph features

- Features: big-digit, chronograph, time of day in hours, minutes, seconds, AM/PM, date, day, time-of-day alarm
- Stopwatch functions: single action, time in/out, cumulative split, continuous timing
- Extra-tough ABS plastic shockproof construction makes unit ideal for lab and plant use
- Supplied: battery, lanyard, Traceable® Certificate

Cat. No.	Timing Capacity	Resolution	Accuracy	Timing Functions
94461-21	23 hours, 59 minutes, 59 seconds	0.01 second (0 to 30 min); 1 second (>30 min)	0.0035%	A, B, C, D



## Traceable® Decimal Stopwatch

### Extremely accurate stopwatch designed for ease of operation and reliability

- Features: 500 memories, clock, date, day of week, time-of-day alarm
- Decimal stopwatch's four timing formats/resolution are: HR/MIN/SEC; 1/100 SEC; 1/1000 min; 1/100,000 hr; maximum readouts are 19.999999 HR, 1199.999 MIN, 71999.99 SEC, or 19 hr/59 min/59 sec/99 hundredths
- Stopwatch functions: single action, time out, cumulative split, interval split, continuous roll-over timing
- Supplied: battery, lanyard, Traceable® Certificate

Cat. No.	Timing Capacity	Accuracy	Timing Functions
98766-04	19 hours, 59 minutes, 59 seconds, 99 hundredths	0.0005%	A, B, C, D, E, F

## Traceable® Digital Stopwatch

### Extremely accurate stopwatch make this a lab must-have

- Features: large digits, water-resistant, constructed to seal out moisture, dust and fumes, alarm
- Stopwatch functions: single action, time out, cumulative split, interval split, continuous roll-over time
- Supplied: battery, lanyard, Traceable® Certificate

Cat. No.	Timing Capacity	Resolution	Accuracy	Timing Functions
98766-03	9 hours, 59 minutes, 59 seconds, 99 hundredths	0.01 second	0.0005%	A, B, C, D, E

## Traceable® Dual-Display Digital Stopwatch

### Dual-display, quartz-crystal stopwatch with cycle counter

- Features: 8 memories, alarm
- Stopwatch functions: single action, time out, cumulative split, interval split, continuous roll-over timing
- Dual display shows cumulative and interval split
- Display count box shows how many times the cycle has been repeated
- Supplied: battery, lanyard, Traceable® Certificate

Cat. No.	Timing Capacity	Resolution	Accuracy	Timing Functions
98766-05	9 hours, 59 minutes, 59 seconds, 99 hundredths	0.01 second	0.0005%	A, B, C, D, E, F

## Traceable® Jumbo-Digit Stopwatch

### Vivid, large stopwatch digits provide ease in reading

- Features: water-resistant, time-of-day alarm, ABS plastic case, AM/PM, date, day, alarm
- Stopwatch functions: single-action, time-out, cumulative-split, and continuous timing
- Supplied: Velcro®, Traceable® Certificate, battery, lanyard, detachable clip

Cat. No.	Timing Capacity	Resolution	Accuracy	Timing Functions
94460-28	23 hours, 59 minutes, 59 seconds	1/100 of a second (between 0 to 30 minutes)	0.001%	A, B, C, D
		1 second (between 31 min to 23 hr 59 min 59 sec)		

## Traceable® Stopwatch/Chronograph

### Extra-tough construction with alarm

- Features: shock-resistant ABS plastic case, AM/PM, date, day, alarm, clock
- Stopwatch functions: single-action, time-out, cumulative-split, and continuous timing
- Supplied: lanyard, Traceable® Certificate, battery

Cat. No.	Timing Capacity	Resolution	Accuracy	Timing Functions
98766-06	24 hours	0.01 second	0.001% (Ultra™)	A, B, C, D
98766-07			0.01%	

## Traceable® Waterproof/Shockproof Stopwatch

### General purpose stopwatch is waterproof to three atmospheres

- Features: waterproof, chronograph, time of day in hours, minutes, and seconds, date, day, and alarm
- Stopwatch functions: single action, time out, cumulative split, interval split, continuous timing
- Supplied: battery, key-chain, Traceable® Certificate

Cat. No.	Timing Capacity	Resolution	Accuracy	Timing Functions
94460-55	23 hours, 59 minutes, 59 seconds	1/100 of a second (between 0 to 30 minutes) 1 second (between 31 min to 23 hr 59 min 59 sec)	0.01%	A, B, C, D, E



### Traceable™ Certificate

To assure accuracy an individually-numbered Traceable™ Certificate which assures accuracy from an ISO/IEC 17025:2005 (1750.01) calibration laboratory accredited by A2LA. It indicates traceability of measurements to the SI units through NIST or other recognized national measurement institutes (NMI) that are signatories to the CIPM Mutual Recognition Agreement.



## Traceable® Countdown Stopwatch

### Programmable, single-action stopwatch reliable for frequent tasks

- Features: 8 memories, countdown/alarm timing in pre-programmed increments: 1-3, 5, 10, 12, 15, 20, 25, 30, 35, 40, 45, 50, 55, 60 min
- Stopwatch functions: single action, time in/out, cumulative split, interval split, continuous timing
- Dual display timer mode can be used in 3 ways: 2 different countdown times simultaneously, 2 independent countdown alarm timers, and 2 independent count up timers
- Supplied: battery, lanyard, Traceable® Certificate

Cat. No.	Timing Capacity	Resolution	Accuracy	Timing Functions
94460-15	99 hours, 59 minutes, 59 seconds, 99 hundredths	1/100 second	0.01%	A, B, C, D, E

## Traceable® Three-Key Stopwatch

### The first disposable stopwatch

- Stopwatch functions: single action timing, time-in/time-out timing, cumulative split timing, continuous timing
- Supplied: battery, lanyard, Traceable® Certificate

Cat. No.	Timing Capacity	Resolution	Accuracy	Timing Functions
94460-06	23 hours, 59 minutes, 59 seconds, 99 hundredths	0.01 second	0.01%	A, B, C, D

## Traceable® Digital Bench-top Timer

### Unique external triggering capability provides broad array of timing options

- Features: large LCD screen, lab-bench footprint
- Stopwatch functions: time in/out timing, cumulative split and interval split, infinite time outs
- Three 4mm sockets and supplied test leads allow external triggering of STOP/START and SPLIT/LAP/RESET
- Supplied: battery, test leads, Traceable® Certificate

Cat. No.	Timing Capacity	Resolution	Accuracy	Timing Functions
98766-13	9 hours, 59 minutes, 59 seconds, and 99 hundredths	0.01 second	0.001%	A, B, D, E

## Humidity Selection Chart

Cat. No.	Page No.	Traceable® Certificate Supplied	Relative Humidity Range	Relative Humidity Resolution	Relative Humidity Accuracy	Temperature Range	Resolution	Accuracy	Battery	Features
98767-14	49	Yes	0.0 to 95.0% RH	0.1%	3% RH	0.0 to 65.0°C	0.1°	±0.4°C	1105	Download data to USB drive
03313-65	51	Yes	10.00 to 95.00% RH	0.01% RH	±1.5% RH	-40.0 to 104.4°C	0.01°	±0.4°C	1112	Also reads dew point
03313-66	51	Yes	5.00 to 95.00% RH	0.01% RH	±1.5% RH	-40.0 to 104.4°C	0.01°	±0.4°C	1112	Response time of 10 seconds
03313-88	50	Yes	10.0 to 95.0% RH	0.01% RH	±1.5% RH	0.0 to 50.0°C	0.01°	±0.4°C	1112	Simple point/read technology
98766-54	50	Yes	20 to 95% RH	1% RH	±3.5% RH	0.0 to 50.0°C	0.1°	±1°C	1005	Pen shape
98766-84	50	Yes	25 to 95% RH	1% RH	±2% RH	0 to 50°C	1°	±1°C	1105	Dual min/max memories
03313-87	53	Yes	5.0 to 95.0% RH	0.1% RH	±3% RH	0.0 to 60.0°C	0.1°	±0.5°C	1105	Remote humidity sensor
37803-51	52	Yes	10 to 95% RH	0.1% RH	±3% RH	-20 to 60°C	0.1°	±1°C	1105	Hard-copy results
03313-86	53	Yes	25 to 95% RH	1% RH	±2% RH	-50 to 70°C	1°	±1°C	1105	Jumbo digits
37950-01	52	Yes	10 to 95.0% RH	0.1% RH	±2% RH	-18 to 93°C	0.1°	±1°C	1112	Computer-output
98766-86	50	Yes	10.0 to 95.0% RH	0.1% RH	±2.5% RH	-20.0 to 60.0°C	0.1°	±1°C	1112	Recorder output
90080-04	52	Yes	10.0 to 95.0% RH	0.01% RH	±3% RH	0.0 to 50.0°C	0.01°	±1°C	1112	Computer-output
03313-06	53	Yes	0 to 100% RH	10% RH	±5% RH	n/a	n/a	n/a	n/a	Humidity card (pack of six)
94460-84	51	Yes	25 to 90% RH	1% RH	±2% RH	-20 to 60°C	0.1°	±1°C	1111/1105	Radio-signal from remote
37950-02	52	Yes	10.0 to 95.0% RH	0.1% RH	±2% RH	-18 to 93°C	0.1°	±1°C	1112	Computer-output
98766-88	52	Yes	0 to 100.0% RH	0.1% RH	±3% RH	-20.0 to 50.0°C	0.1°	±1°C	1105	Dew point, min/max
90080-03	53	Yes	1 to 99% RH	0.1% RH	±4% RH	-40 to 70°C	0.1°	±1°C	1105	Dew point and wet-bulb monitor
37803-83	49	Yes	20.0 to 95.0% RH	0.1% RH	±3% RH	-10 to 60°C	0.1°	±1°C	1111	RH Alarm and reads Dew point
37803-86	49	Yes	0.0 to 90.0% RH	0.1% RH	±5% RH	0 to 50.0°C	0.1°	±1°C	1111	Datalogger with Memory card



## Traceable® Excursion-Trac™ or Memory-Loc™ Datalogging Hygrometers

Perfect for hoods, storerooms, cleanrooms and other environments

- Unit has both ambient and external sensors that both measure humidity and temperature readings
- Stores up to 30 unique alarm events
- Recorded data (CSV file) may be transferred from thermometer to PC or Mac using a USB flash drive—no additional software needed
- Hassle-free retrieval of data—unit can remain in use while downloading/analysing data



98767-14

Cat. No.	Parameter	Range	Accuracy	Resolution	Data Overwrite	Memory
<b>Excursion-Trac™</b>						
98767-14	Ambient Humidity External Humidity Ambient Temperature External Temperature	0.0 to 95.0% RH (non-condensing) 32.0 to 145.0°F (0.0 to 65.0°C) -4.0 to 158.0°F (-20.0 to 70.0°C)	3% RH (5 to 75%), ±5% RH otherwise ±0.4°C	0.1% RH 0.1°	Yes	525,504 data points
<b>Memory-Loc™</b>						
98767-16	Ambient Humidity External Humidity Ambient Temperature External Temperature	0.0 to 95.0% RH (non-condensing) 32.0 to 145.0°F (0.0 to 65.0°C) -4.0 to 158.0°F (-20.0 to 70.0°C)	3% RH (5 to 75%), ±5% RH otherwise ±0.4°C	0.1% RH 0.1°	No	688,086 data points

## Traceable® Memory-Card Humidity/Temperature/Dew Point

It records readings from once a minute up to once every 720 minutes on a SD memory card

- Datalogging capabilities that can capture 5.9 million readings with 256 mb removable SD memory card
- Visual and audible alarms indicate when temperature, humidity or dew point rises above and falls below user-defined set points
- USB memory card reader plugs directly into Windows and Mac—no software to install to retrieve date/time of day and readings of sensors
- Supplied: 256 mb SD memory card, USB memory card reader, magnetic strips, Velcro®, wall mount, bench stand, batteries, adaptor, Traceable® Certificate



Cat. No.	Range	Resolution	Accuracy	Dew Point
37803-86	Humidity: 0.0 to 90.0% RH	0.1%	±5% RH at 25°C between 20 to 85%; ±7% RH elsewhere	-20.0 to 50.0°C with 0.1° resolution
	Temperature: 0 to 50.0°C	0.1°	±1°C	

## Traceable® Digital Humidity/Temperature/Dew Point Meter

Convenient triple memory recalls MIN/MAX for RH, dew point, and temperature

- Audible and visual LED alarm may be set to trigger at three different humidity readings (55%, 60% or 65%)
- Solid state sensors deliver response times of less than 30 seconds, °F/°C switchable
- Supplied: wall mount, batteries, Traceable® Certificate



Cat. No.	Range	Resolution	Accuracy	Dew Point
37803-83	Humidity: 20.0 to 95.0%	0.1%	±3% mid-range, ±5% elsewhere	14 to 140°F (-10 to 60°C)
	Ambient Temperature: 14.0 to 140.0°F (-10.0 to 60.0°C)	0.1°	±1°C	

### Traceable™ Certificate

To assure accuracy an individually-numbered Traceable™ Certificate which assures accuracy from an ISO/IEC 17025:2005 (1750.01) calibration laboratory accredited by A2LA. It indicates traceability of measurements to the SI units through NIST or other recognized national measurement institutes (NMI) that are signatories to the CIPM Mutual Recognition Agreement.



## Traceable® Digital Humidity/Temperature Meter

Simultaneously displays humidity & temperature with dual-recall memories

- Ideal for routine measurements, monitoring, quality-control needs, and critical experimental requirements
- Minimum and maximum memories can be displayed or cleared at any time with the touch of a key
- Fulfils CLIA requirements, °F/°C switchable
- Supplied: wall mount, bench, stand, batteries, Traceable® Certificate

Cat. No.	Range	Resolution	Accuracy	Features
98766-84	Humidity: 25 to 95% RH	1%	±2% RH mid-range to ±4% RH elsewhere	MIN/MAX memory
	Temperature: 32 to 122°F (0 to 50°C)	1°	±1°C between 0 to 40°C, otherwise ±2°C	



## Traceable® Humidity/Temperature Pen

Quickly view temperature and relative humidity with dual-recall memories

- Meets Federal Government CLIA requirement 493.1252
- Easy to carry due to handy pocket clip
- Response time is less than 6 seconds, °F/°C switchable
- Supplied: battery, Traceable® Certificate

Cat. No.	Range	Resolution	Accuracy
98766-54	Humidity: 20 to 95% RH	1%	±3.5% RH from 30 to 90%; otherwise ±5.5% RH
	Temperature: 32.0 to 122°F (0.0 to 50°C)	0.1°	±1°C/±2°F



## Traceable® General-Purpose Hygrometer/Thermometer

Perfect quality-control unit displays accurate answers for every air measurement

- Easy-to-operate unit features a DATA HOLD switch allowing readings to be captured and noted
- Unit is self-contained with built-in humidity and temperature sensors, °F/°C switchable
- Response times vary from 30 seconds to 3½ minutes
- Supplied: battery, Traceable® Certificate

Cat. No.	Range	Resolution	Accuracy
03313-88	Humidity: 10.0 to 95.0% RH	0.01%	±1.5%
	Temperature: 32.0 to 122.0°F (0 to 50°C)	0.01°	±0.4°C at tested points

### Accessories

90080-132	Data Acquisition System (for additional information see page 66)
-----------	--



## Traceable® Humidity/Temperature Meter

Hand-held, compact unit is easy to operate

- Memory captures 99 data points which can be recalled on demand
- Response time is 30 seconds to 5 minutes depending on environment, °F/°C switchable
- Large 1.2 cm digits can be read from 3 metres away
- Precision thin-film capacitance sensor updates the display 3 times per second
- Supplied: battery, tripod-mount, hard carrying case, Traceable® Certificate

Cat. No.	Range	Resolution	Accuracy
98766-86	Humidity: 10.0 to 95.0% RH	0.1%	±2.5% RH mid-range to ±5% RH elsewhere
	Temperature: -4.0 to 140.0°F (-20.0 to 60.0°C)	0.1°	±0.1°C

## Traceable® Radio-Signal Remote Humidity/Thermometer

Monitors humidity and temperature up to 30 metres away

- Unit feature high/low alarms, °F/°C switchable
- Data is transmitted every 30 seconds
- Trend indicators show if humidity is rising or falling
- Additional Traceable Humidity/Thermometer Remote Sensor Module (Cat No. 94460-84); may be set to channel 1, 2, or 3; total of three modules may be used with main unit 94460-85
- Supplied: battery, carrying case, flip-open stand, wall brackets, one remote sensor module Traceable® Certificate



Cat. No.	Range	Resolution	Accuracy
94460-84	Humidity: 25 to 90% RH	1%	±2% RH mid-range to ±4% RH elsewhere
	Temperature: -4 to 140°F (-20 to 60°C)	0.1°	±1°C

Accessories	
94460-85	Additional Traceable® Humidity/Thermometer Remote Sensor Module

## Traceable® Pocket Hygrometer/Dew Point/Thermometer

Humidity, dew point, temperature display—sensor not affected by condensation

- Unit may be used in 100% humidity, °F/°C switchable
- Full range response time of 30 seconds to 1 minute
- Supplied: Traceable® Certificate, battery, hard carrying case

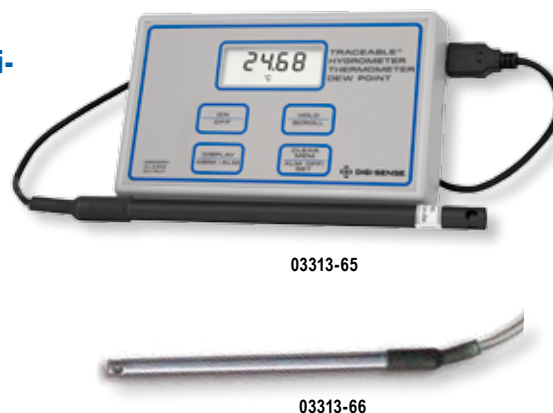


Cat. No.	Range	Resolution	Accuracy
98766-88	Humidity: 0 to 100.0% RH	0.1%	±3% RH mid-range to ±4% RH elsewhere
	Temperature: -20.0 to 50.0°C (-4.0 to 122°F)	0.1°	±1°C
	Dew point: -20.0 to 50.0°C (-4.0 to 122°F)	0.1°	±1°C

## Traceable® Humidity/Temperature/Dew Point Meter

Resolution of 0.01% relative humidity—ideal for QC labs, ISO 9001 environments and Research & Development

- Ideal for hoods, clean rooms, food storage, process control, incubators, desiccators, drug manufacturing, environmental chambers, corrosion analysis, inside/outside air monitoring
- Fulfils federal CLIA requirements
- MIN/MAX Memory, °F/°C switchable, High/Low alarms can be programmed for dew point, temperature and humidity
- Computer output permits data to be captured, transferred, stored and printed with DAS software
- Probe: 17.8 cm length x 1 cm diameter; cable: 1.8 metres
- Supplied: computer output, battery, Traceable® Certificate



Cat. No.	Range	Response time	Resolution	Accuracy	Probe
03313-66	Humidity: 5.00 to 95.00% RH	10 seconds	0.01% RH	±1.5% RH	Stainless-steel: 17.8 cm length x 1 cm dia.; cable: 1.8 metres
	Temperature: -40.00 to 220.0°F (-40.00 to 104.0°C)	—	0.01°	±0.4°C (0 to 40°C) elsewhere 1°C	
	Dew Point: -40.00 to 140.0°F (-40.00 to 60.00°C)	—	0.01°	—	
03313-65	Humidity: 10.00 to 95.00% RH	30 seconds	0.01% RH	±1.5% RH	Epoxy: 17.8 cm length x 1 cm dia.; cable: 1.8 metres
	Temperature: -40.00 to 220.0°F (-40.00 to 104.0°C)	—	0.01°	±0.4°C (0 to 40°C) elsewhere 1°C	
	Dew Point: -40.00 to 140.0°F (-40.00 to 60.00°C)	—	0.01°	—	

Accessories	
90080-21	Data Acquisition System Software
90225-22	Universal AC Adaptor

### Traceable™ Certificate

To assure accuracy an individually-numbered Traceable™ Certificate which assures accuracy from an ISO/IEC 17025:2005 (1750.01) calibration laboratory accredited by A2LA. It indicates traceability of measurements to the SI units through NIST or other recognized national measurement institutes (NMI) that are signatories to the CIPM Mutual Recognition Agreement.



## Traceable® Humidity/Thermometer

### Unit simultaneously displays humidity or dew point and temperature

- Unit displays MIN/MAX humidity readings and includes a HOLD key to freeze display for later reading
- Records wide humidity variations on a second-to-second basis
- Captures 1000 readings manually at the push of a key or automatically when set between 1 to 3,600 secs
- Computer output allows unit to be connected to a computer for data downloading
- Supplied: battery, probe, 1 m cable, computer output, carrying case, Traceable® Certificate

Cat. No.	Range	Resolution	Accuracy	Probe
90080-04	Humidity: 10.0 to 95.0% RH	0.01%	±3% RH	Size: 20.3 x 1.6 cm diameter
	Temperature: 32.0 to 122.0°F (0.0 to 50.0°C)	0.01°	±1°C	
<b>Accessories</b>				
19601-30	Data Acquisition System (for additional information see page 66)			



## Traceable® Memory Hygrometer/Thermometer

### Extremely accurate and portable

- Microprocessor-based design provides unparalleled accuracy
- Simultaneously displays both temperature and relative humidity on dual 2.8 cm LCD
- 0.9 m cable allows user to retrieve readings from hard-to-reach areas
- Supplied: probe, cable, battery, carrying case, Traceable® Certificate

Cat. No.	Range	Resolution	Accuracy
37950-01	Humidity: 10 to 95% RH	0.1% RH	±2.0%RH mid-range, ±4.0%RH otherwise
	Temperature: -18 to 93°C	0.1°	±1°C between 0 to 40°C, otherwise ±2°C
37950-02	Humidity: 10 to 95% RH	0.1% RH	±2.0%RH mid-range, ±4.0%RH otherwise
	Temperature: -18 to 93°C	0.1°	±1°C between 0 to 40°C, otherwise ±2°C
	Dew Point: 0 to 50°C	0.1°	±2°C
<b>Accessories</b>			
37950-70	Data Acquisition System Software		



## Traceable® Printing Hygrometer/Thermometer

### Print readings at any programmed time interval from 6 seconds to 59 minutes, 59 seconds

- Provides a permanent record by printing current humidity/temperature/time/date and maximum and minimum readings; also includes time and date that the readings occurred.
- Fast-response, solid-state sensors detect changes in less than 10 seconds
- Meets CLIA specification 493.1252
- Supplied: T1, T2 Type-K probe, cable, probe holder/stand, carrying case, paper rolls, battery, Traceable® Certificate

Cat. No.	Range	Resolution	Accuracy	Probe
37803-51	Humidity: 30 to 95%	0.1% RH	±3% RH mid-range to ±5% RH elsewhere	Probe: 1.9 cm diameter x 15.8 cm; 1.2 m cable
	T1 Temperature: -20.0 to 60.0°C	0.1°	±1°C	
	T2 Temperature: -200 to 1,333°C	0.1°C (from -328 to 999.9°F) elsewhere 1°	±(0.2% of reading plus 1.8°C)	Type-K: 0.15 cm diameter; 1.2 m cable
<b>Accessories</b>				
37803-50	Replacement Printing Paper (pack of 2 rolls)			
37803-55	Adaptor (for AC operation)			

## Traceable® Jumbo Humidity/Temperature Meter

Jumbo 2.9 cm digits display humidity, temperature—read from 10 metres away

- Simultaneously displays ambient relative humidity and internal probe and external probe temperatures °F/°C with dual-recall memories
- Both sensor and 3 metre cable perform accurately when under water
- Fulfils CLIA specification 493.1207
- Response time is less than 30 seconds
- Supplied: flip-open stand, wall mount, battery, Traceable® Certificate



Cat. No.	Range	Resolution	Accuracy
03313-86	Ambient humidity: 25 to 95% RH	1%	±2% RH mid-range to ±4% RH elsewhere
	Ambient temperature: 32 to 122°F (0 to 50°C)	1°	±1°C
	Probe temperature: -58 to 158°F (-50 to 70°C)	1°	±1°C

## Traceable® Remote Alarm RH/Temperature Monitor

Triple display simultaneously shows minimum, maximum, and current humidity/temperature readings

- Remote humidity/temperature sensor on a 2 metre cable
- Min/Max memories
- High/low alarm feature may be set by user in 1% RH or 1° increments
- Perfect for use in hoods, classrooms, stockrooms, environmental chambers and chemical storage areas
- Supplied: battery, external humidity/temperature sensor, flip-open stand, wall mount, Traceable® Certificate



Cat. No.	Range	Resolution	Accuracy	Features
03313-87	Humidity: 5.0 to 95.0% RH	0.1%	±3% RH from 25 to 75%, ±5% otherwise	MIN/MAX memory, 2 metre cable
	Temperature: 32.0 to 140.0°F (0.0 to 60.0°C)	0.1°	±0.5°C	

## Traceable® Dew Point/Wet-Bulb/Humidity/Thermometer Alarm

Settable high/low alarms for all four readings

- Unit shows current minimum and maximum readings for dew point, wet-bulb, humidity and temperature
- Alarm sounds for 1 minute and display flashes until readings return to non-alarm conditions
- Supplied: stand, batteries, wall-mount, Traceable® Certificate



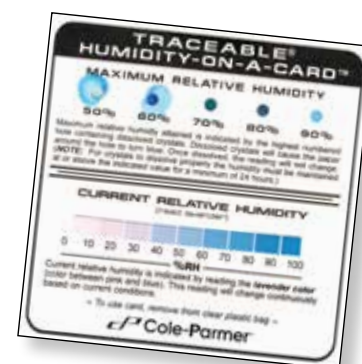
Cat. No.	Range	Resolution	Accuracy
90080-03	Humidity: 1.0 to 99.0% RH	0.1%	±4% RH from 35 to 75%, ±5% otherwise
	Temperature: -40.0 to 158°F (-40.0 to 70.0°C)	0.1° below 100°	±1°C

## Traceable® Humidity-on-a-Card™

Colour changes from blue to lavender in increments of 10% RH

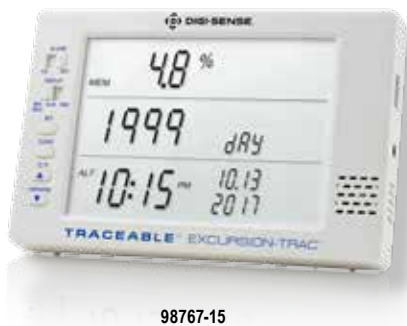
- Individually sealed cards indicate both current humidity and the maximum humidity attained
- Maximum relative humidity attained is indicated by the highest numbered hole containing dissolved crystals
- Monitor humidity levels in shipments, optics and packaging
- Supplied: Traceable® Certificate

Cat. No.	Range	Resolution	Accuracy	Size	Quantity
03313-06	Humidity: 0 to 100% RH	10% RH	±5% RH at 75°F (24°C)	10 x 10 cm	6/pk



### Traceable™ Certificate

To assure accuracy an individually-numbered Traceable™ Certificate which assures accuracy from an ISO/IEC 17025:2005 (1750.01) calibration laboratory accredited by A2LA. It indicates traceability of measurements to the SI units through NIST or other recognized national measurement institutes (NMI) that are signatories to the CIPM Mutual Recognition Agreement.



## Traceable® Excursion-Trac™ or Memory-Loc™ Datalogging Barometers

Perfect for warehouse, labs and other environments where ambient parameters need to be monitored

- Stores up to 30 unique alarm events
- Altitude Compensation from -100 to 2,500 meters
- Recorded data (CSV file) may be transferred from thermometer to PC or Mac using a USB flash drive—no additional software needed
- Hassle-free retrieval of data—unit can remain in use while downloading/analysing data

Cat. No.	Parameter	Range	Accuracy	Resolution	Data Overwrite	Memory
<b>Excursion-Trac™</b>						
98767-15	Barometric Pressure Relative Humidity Ambient Temperature	500 to 1030 mbar 0.0 to 95.0% RH (non-condensing) 32.0 to 158.0°F (0.0 to 55.0°C)	±4 mbar 3% RH (5 to 75% RH), ±5%RH otherwise ±0.4°C	1 mbar 0.1% RH 0.1°	Yes	525,600 data points
<b>Memory-Loc™</b>						
98767-17	Barometric Pressure Relative Humidity Ambient Temperature	500 to 1030 mbar 0.0 to 95.0% RH (non-condensing) 32.0 to 158.0°F (0.0 to 55.0°C)	±4 mbar 3% RH (5 to 75% RH), ±5%RH otherwise ±0.4°C	1 mbar 0.1% RH 0.1°	No	819,150 data points



## Traceable® Digital Barometer

Perfect unit for plants, labs, and all other environments where there is a need to monitor environmental air parameters

- A four-line LCD simultaneously shows barometric pressure, temperature, relative humidity, barometric pressure trend and time
- Min/Max readings for barometric pressure, temperature and relative humidity are stored every hour for last 24 hours and are available for recall at the touch of a button
- Barometric pressure trend shows in bar-chart format current and past 1/3/6/12 and 24-hour readings
- Altitude compensation: -100 to 2,500 meters
- Computer output allows unit to be connected to a computer using the accessory Computer Data Acquisition System to permanently capture readings
- Supplied: Traceable® Certificate, wall mount, flip open stand and batteries

Cat. No.	Function	Range	Resolution	Accuracy
68000-49	Barometric pressure	500 to 1030 millibars (14.77 to 30.41 inHg)	1 mbar (0.01 inHg)	±4 mbar (±0.12 inHg)
	Ambient Temperature	32 to 131°F (0 to 55°C)	0.1°	±0.4°C (±0.8°F)
	Humidity	5 to 95% RH	1%	±3% RH between 5 to 75%, otherwise ±5% RH

**Accessories**

68000-51	Data Acquisition System Software
----------	----------------------------------

## Traceable® Hand-Held Barometer

### Hand-held multi-tasking barometer is ideal lab partner for any workplace

- Hand-held unit measures altitude, temperature and barometric pressure
- Barometric trend graph delivers present and previous 2/4/6/8/10 and 12-hour readings in bar-chart format
- Barometer pressure readings are updated every 15 minutes
- Includes stopwatch, time-of-day clock and compass
- Supplied: batteries, lanyard, Traceable® Certificate

Cat. No.	Function	Range	Resolution	Accuracy
68000-48CP	Barometric pressure	8.85 to 32.45 inHg; 300 to 1100 mbar	0.01 inHg; 1 mbar	±0.2363 inHg; ±8 mbar
	Temperature	14 to 140°F (-10 to 60°C)	0.1°	±1.5°C
	Altitude	-2296 to 29520 ft -700 to 9000 meters	0.1 from -500 to 999.9, 1 elsewhere	—
	Stopwatch	1 sec to 23 hrs, 59 min, 59 sec	0.1°	—



## Traceable® Hygrometer/Thermometer/Barometer/Dew Point Pen

### Lightweight and compact unit measures humidity, temperature, barometric pressure and dew point

- User selectable dual display shows humidity/temperature, humidity/dew point, barometric pressure/temperature or barometric pressure/humidity
- Portable—easy operation
- MIN/MAX readings recalled at the press of a key
- Supplied: metal clip, battery, Traceable® Certificate

Cat. No.	Function	Range	Resolution	Accuracy
37950-04	Barometric Pressure	10.0 to 1100 mbar (hPa); 7.5 to 825.0 mmHg; 0.29 to 32.48 inHg	0.1 and 1 mbar (hPa); 0.1 mmHg; 0.01 inHg	±4 hPa between 550 to 1100 hPa
	Humidity	10.0 to 95.0% RH	0.1%	±3% RH midrange to ±4% RH elsewhere
	Thermometer	0.0 to 50.0°C	0.1°C	±1°C
	Dew Point	-25.3 to 48.9°C	0.1°	±1°C



## Traceable® Precision Dial Barometer

### Highly reliable, place-anywhere barometer delivers meticulous results

- Barometer has response time of 1 to 4 hours and triple scales that provide precise, sensitive measurements of atmospheric pressure
- Adjustable pointer may be set to indicate changes
- Altitude adjustment screw is supplied for use at locations as high as 1,000 meters
- Supplied: altitude adjustment screw, stand, wall mount, Traceable® Certificate

Cat. No.	Function	Range	Resolution	Accuracy
99760-50	Barometric pressure	28.1 to 31.7 inHg 945 to 1073 mbar 715 to 805 mmHg	0.05 inHg 0.5 mbar 0.5 mmHg	±0.5% of reading



### Traceable™ Certificate

To assure accuracy an individually-numbered Traceable™ Certificate which assures accuracy from an ISO/IEC 17025:2005 (1750.01) calibration laboratory accredited by A2LA. It indicates traceability of measurements to the SI units through NIST or other recognized national measurement institutes (NMI) that are signatories to the CIPM Mutual Recognition Agreement.



37955-12

## Traceable® Vane Anemometer Pens

### Designed for intuitive, easy operation by everyone

- Unit recalls MIN/MAX readings and also has a HOLD key allowing user to freeze current reading on display
- Three units provide airflow/temperature, airflow/temperature/humidity/dew point, and airflow/temperature/dew point/barometric pressure
- Constructed to keep dust and dirt out of unit, assuring a long life even in harsh conditions
- Supplied: batteries, Traceable® Certificate

Cat. No.		37955-12	37955-14	37955-16
Air Flow	Range	0.4 to 30.0 m/s 1.4 to 108.0 km/hr 80 to 5910 ft/min 0.9 to 67.0 mile/hr 0.8 to 58.3 knots	0.4 to 30.0 m/s 1.4 to 108.0 km/hr 80 to 5910 ft/min 0.9 to 67.0 mile/hr 0.8 to 58.3 knots	0.4 to 30.0 m/s 1.4 to 108.0 km/hr 80 to 5910 ft/min 0.9 to 67.0 mile/hr 0.8 to 58.3 knots
	Resolution	0.1 m/s; 0.1 km/hr; 1ft/min 0.1 mile/hr; 0.1 knots	0.1 m/s; 0.1 km/hr; 1ft/min 0.1 mile/hr; 0.1 knots	0.1 m/s; 0.1 km/hr; 1ft/min 0.1 mile/hr; 0.1 knots
	Accuracy	±3% full scale under 20 m/s ±4% full scale over 20 m/s	±3% full scale under 20 m/s ±4% full scale over 20 m/s	±3% full scale under 20 m/s ±4% full scale over 20 m/s
Temperature	Range	32.0 to 122.0°F (0.0 to 50.0°C)	32.0 to 122.0°F (0.0 to 50.0°C)	32.0 to 122.0°F (0.0 to 50.0°C)
	Resolution	0.1°	0.1°	0.1°
	Accuracy	±0.8°C	±0.8°C	±0.8°C
Humidity	Range	—	10.0 to 95.0% RH	10.0 to 95.0% RH
	Resolution	—	0.1%	0.1%
	Accuracy	—	±3 of reading +1	±3 of reading +1
Dew Point	Range	—	-13.5 to 120.1°F (-25.3 to 48.9°C)	-13.5 to 120.1°F (-25.3 to 48.9°C)
	Resolution	—	0.1°	0.1°
Barometric Pressure	Range	—	—	10.0 to 1100 hPa; 7.5 to 825.0 mmHg; 0.29 to 32.48 inHg
	Resolution	—	—	0.1 and 1hPa; 0.1 mmHg; 0.01 inHg
	Accuracy	—	—	±4 hPa



## Traceable® Micro-Anemometer/Thermometer

### Ultra compact micro-design is small in size and big in features

- Water-resistant unit measures air velocity in five user selectable values; meters per minute, feet per second, miles per hour, kilometres per hour and knots
- Readings updated 2 times per second and immediate results provided
- Maximum airflow measured and temperature in F and C also displayed on screen
- Supplied: Traceable® Certificate, lanyard, nylon carrying case, battery

Cat. No.	Function	Range	Resolution	Accuracy
37955-50	Air Flow	0.0 to 30.0 m/s, 0.0 to 98.0 ft/sec, 0.0 to 67.0 mile/hr, 0.0 to 108.0 km/hr, 0.0 to 58.0 knots	0.1 m/s, 0.1 km/hr, 0.1 ft/sec, 0.1 mile/hr, 0.1 knots	±5% full scale
	Temperature	-20.0 to 80.0°C (-4.0 to 176.0°F)	0.1°	±1°C



## Traceable® Hot Wire Anemometer/Thermometer

### Great precision—even at low air velocities

- Handy telescopic probe—expandable from 24 cm to one metre—is ideal for hard-to-reach areas
- No-moving-parts anemometer eliminates friction errors—perfect for any environmental test
- Output capability allows unit to be connected to a computer or data logger to monitor/store results
- Supplied: batteries, dual thermistor probes, 1 m cable, computer output, Traceable® Certificate

Cat. No.	Air Velocity	Resolution	Accuracy
98767-11	0.2 to 20.0 m/s; 0.7 to 72.0 km/hr; 40 to 3940 ft/min; 0.5 to 44.7 mile/hr; 0.4 to 38.8 knots	0.1 m/sec.; 0.1 km/hr; 1 ft/min; 0.1 mile/hr; 0.1 knots	±(1% full scale+ 1 digit)

#### Accessories

19601-30	Data Acquisition System (for additional information, please see page 66)
----------	--



## Traceable® Anemometer/Thermometer

### Double-duty anemometer simultaneously displays air velocity and temperature

- Easy-to-operate anemometer is ideal for use in hoods or outdoors
- MEMORY key allows for recalling highest/lowest readings achieved and HOLD freezes display to record test results
- Unit has computer output capabilities
- Supplied: battery, carrying case, computer output, Traceable® Certificate

Cat. No.	Air Velocity	Resolution	Accuracy
98767-12	0.40 to 30.0 m/sec; 1.4 to 108.0 km/hr; 80 to 5900 ft/min; 0.9 to 67.0 mile/hr; 0.8 to 58.0 knots	0.1 m/sec; 0.1 km/hr; 1 ft/min; 0.1 mile/hr; 0.1 knots	±3% of full scale

#### Accessories

4237	Data Acquisition System (for additional information, please see page 66)
------	--



## Traceable® Digital Anemometer/Thermometer

### Extraordinarily low-friction design provides a vane that rotates freely in low/high velocities

- Engineered for years of reliable service even in severe or harsh environments
- Reading is updated instantaneously
- Supplied: battery, carrying case, 1.2 m cable, flip-open stand, Traceable® Certificate

Cat. No.	Air Velocity	Resolution	Accuracy
98767-05	0.40 to 30.0 m/sec; 1.4 to 108.0 km/hr; 80 to 5900 ft/min; 0.8 to 53.3 knots	0.1 m/sec; 0.1 km/hr; 10 ft/min; 0.1 knots	±(2% + 1 digit) of speed reading



## Enviro-Meter™

### Four-in-one lab champion

- Lightweight, hand-held workhorse: anemometer, humidity meter, light meter, and 2 thermometers, °F/°C switchable
- HOLD key freezes display, MIN/MAX feature displays highest and lowest reading over any time period
- Supplied: battery, Type-K beaded probe/1.2 m cable, wrist strap

Cat. No.	Function	Range	Resolution	Accuracy
98766-87	Air Velocity	0.40 to 30.0 meters per second 1.4 to 108.0 kilometres per hour 80 to 5910 feet per minute 0.9 to 67.0 miles per hour 0.8 to 58.3 knots (nautical miles per hour)	0.1 m/sec. 0.1 km/hr 1 ft/min 0.1m/h 0.1 knots	±3 or 4% of full scale
	Temperature	Ambient sensor: 32.0 to 122.0°F (0.0 to 50.0°C)	0.1° (°C and °F)	±1.2°C
		Type-K: -148.0 to 2,372°F (-100.0 to 1,300°C)	0.1° (°C and °F)	±(1% of reading + 1°C)
	Humidity	10.0 to 95.0% RH	0.1% RH	±4% RH under 70% ±(4% of reading + 1.2% RH) over 70%
	Light	0 to 20,000 lux (0 to 2000 foot candles)	1 lux (1 fc)	±5% of reading and ±8 digits



### Traceable™ Certificate

To assure accuracy an individually-numbered Traceable™ Certificate which assures accuracy from an ISO/IEC 17025:2005 (1750.01) calibration laboratory accredited by A2LA. It indicates traceability of measurements to the SI units through NIST or other recognized national measurement institutes (NMI) that are signatories to the CIPM Mutual Recognition Agreement.



98766-97

98767-02

Accessories (98766-97 through 98767-00 only)

Cat. No.	Description
37950-70	Data Acquisition System (additional information, see page 75)

## Traceable® Manometer/Pressure/Vacuum Gauge

Quick-response manometer with memory key allows for recalling highest and lowest readings

- Portable unit measures and displays differential pressure/vacuum in 11 different units: psi, mbar, bar, cm/H<sub>2</sub>O, inch/H<sub>2</sub>O, feet/H<sub>2</sub>O, mm/Hg, inch/Hg, kg/cm<sup>2</sup>, oz/inch<sup>2</sup>, kPa
- Printer option provides hard copy of samples number, current reading, date, and time for today's stringent quality-control documentation—user may set unit to repetitively print from 1 second to 2 hours
- Hose fittings on the unit permit hose/tubing with inside diameter 0.15 cm
- Count-up timer displays up to 99 hours, 59 minutes, 59 seconds
- Supplied: computer output, Traceable® Certificate, hose/tubing, batteries, carrying case, paper rolls

Cat. No. Non-printing	98766-97	98766-98	98766-99	98767-00
Cat. No. Printing	98767-01			98767-02
Max. Allowed PSI	20	30	60	150
PSI Range	-5.000 to 5.000	-15.00 to 15.00	-30.00 to 30.00	-100.0 to 100.0
PSI Resolution	0.003	0.01	0.02	0.1
mbar Range	-345.0 to 345.0	-1034 to 1034	-2068 to 2068	-6895 to 6895
mbar Resolution	0.2	1	2	4
bar Range	-0.3450 to 0.3450	-1.034 to 1.034	-2.068 to 2.068	-6.895 to 6.895
bar Resolution	0.001	0.001	0.002	0.004
cm/H <sub>2</sub> O Range	-351.0 to 351.0	-1055 to 1055	-2109 to 2109	-7031 to 7031
cm/H <sub>2</sub> O Resolution	0.2	1	2	4
inch/H <sub>2</sub> O Range	-138.0 to 138.0	-415.0 to 415.0	-830.0 to 830.0	-2768 to 2768
inch/H <sub>2</sub> O Resolution	0.1	0.3	0.5	2
feet/H <sub>2</sub> O Range	-12.00 to 12.00	-35.00 to 35.00	-69.00 to 69.00	-231.0 to 231.0
feet/H <sub>2</sub> O Resolution	0.01	0.02	0.04	0.2
mm/Hg Range	-259.0 to 259.0	-776.0 to 776.0	-1551 to 1551	-5171 to 5171
mm/Hg Resolution	0.2	0.5	1	3
inch/Hg Range	-10.00 to 10.00	-31.00 to 31.00	-61.00 to 61.00	-204.00 to 204.00
inch/Hg Resolution	0.01	0.03	0.1	1.0
kg/cm <sup>2</sup> Range	-0.350 to 0.350	-1.060 to 1.060	-2.110 to 2.110	-7.030 to 7.030
kg/cm <sup>2</sup> Resolution	0.001	0.001	0.002	0.004
oz/inch <sup>2</sup> Range	-80.00 to 80.00	-240.0 to 240.0	-480.0 to 480.0	-1600 to 1600
oz/inch <sup>2</sup> Resolution	0.05	0.2	0.3	1
kPa Range	-34.50 to 34.50	-103.0 to 103.0	-207.0 to 207.0	-690.0 to 690.0
kPa Resolution	0.02	0.1	0.2	0.4

## Traceable® Pressure/Vacuum Gauge

Displays answer in eight different units—with accessory computer output

- At the touch of a key the unit may be zeroed
- Memory function recalls highest and lowest readings
- Supplied: transducer sensor, battery, 1 m cable, computer output, Traceable® Certificate



Accessories

Cat. No.	Description
19601-30	Data Acquisition System (additional information, see page 66)

Cat. No.	98766-89	98766-90
psi range (resolution)	-14.7 to 725 (1)	-14.70 to 29.0 (0.02)
bar range (resolution)	-1.0 to 50 (0.05)	-1.000 to 2.000 (0.002)
Meter/H <sub>2</sub> O (resolution)	-10 to 509.5 (0.5)	-10.00 to 20.40 (0.02)
Atmospheres range (resolution)	-1.0 to 49.35 (0.05)	-1.000 to 1.974 (0.002)
mm/Hg range (resolution)	-736 to 37500 (50)	-736 to 1500 (2)
inch/Hg range (resolution)	-29 to 1476 (1)	-29 to 59.05 (0.05)
inch H <sub>2</sub> O range (resolution)	-394 to 20050 (20)	-394 to 802 (1)
Kg/cm <sup>2</sup> range (resolution)	-1 to 50.95 (0.05)	-1.000 to 2.040 (0.002)

## Traceable® Bench Conductivity Meter

### Easy-to-use—simply turn on, insert probe and read results

- Fulfill all official lab analysis regulations for CAP, ASTM, NCCLS, CLSI, ACS, CLIA, AOAC, EPA, APHA, AWWA, WEF, USGS, USP, ISO, and Federal/State regulations
- Unit automatically encompasses all ranges and selects the most appropriate for the current reading
- Control allows user to store four calibration points using solution standards
- Supplied: adaptor, probe replatinizing current, probe holder arm, battery, Traceable® Certificate



Cat. No.	Measurement	Range					Accuracy	
19601-06	Micromhos (microsiemens)	0.01 to 20.00	0.1 to 200.0	1 to 2000	10 to 20000	100 to 200000	±0.3% +1 digit	
	Megohms	0.001 to 2.000	0.01 to 20.00					
	Dissolved Solids/ Parts Per Million	0.1 to 20.00	1 to 200	10 to 2000	100 to 20000			

#### Accessories

19601-26	Replacement Conductivity Probe— Glass, K=1; Probe range: 0.05 to 200,000 micromhos
19601-28	Accessory Conductivity Probe— Unbreakable Epoxy, K=1; Probe range: 1.0 to 200,000 micromhos

## Traceable® Portable Conductivity Meter

### Quick answers, accurate results

- Automatic range changes; automatic and manual temperature compensation
- Four unique calibration points may be entered into memory utilizing solution standards; settings are stored even when unit is off
- Results displayed are conductivity (microsiemens) and resistivity (megohms), dissolved solids (parts per million), concentration (user-defined units), salinity (oceanographic units) and temperature (F/C)
- Supplied: probe, cable, battery, Traceable® Certificate



Cat. No.	Measurement	Range					Accuracy	
19601-04	Micromhos (microsiemens)	0.01 to 20.000	0.1 to 200	1 to 2000	10 to 20000	100 to 200000	±0.3% +1 digit (0.1 to 1999 Micromhos)	
	Megohms	0.001 to 2.000	0.01 to 20.00					
	Dissolved Solids/ Parts Per Million	0.1 to 20.00	1 to 200	10 to 2000	100 to 20000			

#### Accessories

19601-26	Replacement Conductivity Probe— Glass, K=1; Probe range: 0.05 to 200,000 micromhos
19601-28	Accessory Conductivity Probe— Unbreakable Epoxy, K=1; Probe range: 1.0 to 200,000 micromhos

## Traceable® pH/ORP Meter

### Simply dip into solution and read pH or ORP

- Triple display shows pH or ORP measurement, temperature and time/date—25 point memory storage
- Compact (water-resistant-IP67) instrument fits in the palm of your hand
- Ideal for wastewater, water quality and environmental applications
- Supplied: detachable probe, battery, probe cover, Traceable® Certificate, carrying case, Traceable® One-Shot™ pH Buffer Standards (CRM) 6-Pack Assortment



Cat. No.	Measurement	Range	Resolution	Accuracy
98767-09	pH	0.00 to 14.00 pH	0.01 pH	±0.02 pH
	ORP	-1800 to 1800 mV	0.1mV <1000mV (1mV ≥1000mV)	±20 mV
	Temperature	32 to 140°F (0 to 60°C) (selectable)	0.1° (1° when >100°)	±1°C

#### Accessories

98768-07	Probe Extension Cable
98768-08	Replacement Probe

### Traceable™ Certificate

To assure accuracy an individually-numbered Traceable™ Certificate which assures accuracy from an ISO/IEC 17025:2005 (1750.01) calibration laboratory accredited by A2LA. It indicates traceability of measurements to the SI units through NIST or other recognized national measurement institutes (NMI) that are signatories to the CIPM Mutual Recognition Agreement.



## Traceable® Expanded Range Conductivity Meter

### Accurate answers in five seconds

- Ideal for checking water purity in stills, deionizers, reverse osmosis; testing glassware rinsing, measuring total dissolved solids, and making solutions
- Meter automatically selects proper range and displays the exact answer
- Compatible with all accreditation analysis requirements—perfect for labs wanting to maintain accreditation
- Unit fulfils requirements for CAP, ASTM, NCCLS, CLSI, ACS, CLIA, AOAC, EPA, APHA, AWWA, WEF, USGS, USP, ISO, and Federal/State regulations
- Supplied: probe, batteries, carrying case, computer output, Traceable® Certificate

Cat. No.	Measurement	Range	Accuracy
19601-03	Conductivity	0.00 to 19.99 microsiemens; 0.0 to 199.9 microsiemens; 0 to 1999 microsiemens; 0 to 19.99 millisiemens; 0 to 199.9 millisiemens	±1.0% +1 digit
	Dissolved Solids	0.00 to 9.99 ppm; 0.0 to 99.9 ppm; 0 to 999 ppm; 0 to 9.99 ppt; 0 to 99.9 ppt	

#### Accessories

19601-07	Conductivity Probe—Unbreakable Epoxy, K=1; probe range: 0 to 200,000 microsiemens.
37950-70	Data Acquisition System (for additional information see page 68)
19601-09	9V Adaptor (for international information see page 79)



## Traceable® Dual-Display Conductivity Meter

### Simultaneously shows conductivity readings and temperature

- Simultaneously displays temperature and conductivity, MIN/MAX and average readings
- User-settable or automatic (2% per °C) temperature compensation (coefficient from 0.0 to 5.0% per °C)
- Probe: 15 x 1.27 cm diameter, 1 m cable
- Supplied: epoxy probe, Traceable® Certificate, battery, computer output

Cat. No.	Measurement	Range	Resolution	Accuracy
19601-08	Conductivity	0.0 to 199.9 micromhos (microsiemens); 0.001 to 1.999 millimhos (millisiemens); 0.01 to 19.99 millimhos (millisiemens)	0.1 microsiemen; 0.001 millisiemens; 0.01 millisiemens	±(2% of full scale plus 1 digit)
	Temperature	32 to 140 °F (0.0 to 60.0 °C)	0.1°	

#### Accessories

19601-30	Data Acquisition System (for additional information, see page 66)
19601-34	Easy-Use Adaptor 115 VAC (for international adaptor see page 79)



## Traceable® Pure H<sub>2</sub>O Tester

### Easy-read large digit display

- Meets all lab certification requirements
- Tests water from stills, demineralizers, deionizers, reverse osmosis
- Instant response
- Supplied: epoxy probe, 1 m cable, carrying case, battery, Traceable® Certificate

Cat. No.	Range	Accuracy
98767-06	0.1 to 20,000 (microsiemens)	±0.4% of full scale

## Traceable® Conductivity/TDS/Salinity Pens

### Easiest unit ever designed for routine analysis and quality control

- Three units provide for conductivity, conductivity/total dissolved solids, and salinity
- Simply turn on, insert, and simultaneously read results and temperature-eliminates operator technique errors
- Constructed for severe lab or harsh plant environment use
- Arrow key allows fast setting to calibration standards that are maintained even when unit is off
- Pens fulfil requirements for CAP, ASTM, NCCLS, CLSI, ACS, CLIA, AOAC, EPA, APHA, AWWA, WEF, USGS, USP, ISO, and Federal/State regulations
- Supplied: Traceable® Certificate, battery



19601-01

Cat. No.	19601-01	19601-11	19601-21
<b>Conductivity Range</b>	0 to 1999 microsiemens; 0 to 19.99 millisiemens	0 to 1999 microsiemens; 0 to 19.99 millisiemens	—
<b>Dissolved Solid Range</b>	—	0 to 1999 parts per million; 0 to 19.99 parts per thousand	—
<b>Salinity Range (NaCL)</b>	—	—	0.00 to 10.00 ppt; 10.1 to 70.0 ppt
<b>Resolution</b>	1 microsiemen	1 microsiemen/ 1 part per million	0.01 ppt
<b>Accuracy</b>	±1% full scale + 1 digit	±1% full scale + 1 digit	±2% full scale + 1 digit
<b>Temperature Range</b>	0.0 to 50.0°C/ 32.0 to 122.0°F	0.0 to 50.0°C/ 32.0 to 122.0°F	0.0 to 50.0°C/ 32.0 to 122.0°F
<b>Temperature Resolution</b>	0.1°	0.1°	0.1°
<b>Temperature Accuracy</b>	±0.5°	±0.5°	±0.5°
<b>Settable Temp. Coefficient</b>	0.0 to 4.0% per °C	0.0 to 4.0% per °C	—
<b>Automatic Temp. Compensation</b>	20 and 25°	20° and 25°	25°
<b>Total Dissolved Solids Factor</b>	—	0.4 to 1.00	—
<b>Use with Calibration Standards</b>	400 microsiemens to 19.99 millisiemens	400 microsiemens to 19.99 millisiemens; 400 ppm to 19.99 ppt	0.20 to 7.00%

## Electrode Holder

### Holds electrodes safely and securely in any position

- Fingertip control raises, lowers, and pivots 360 degrees allowing placement of the electrode holder wherever desired
- Holds electrodes safely and securely in any position
- Weighted base stabilizes holder and electrode arm articulates at three points so electrodes always remain vertical

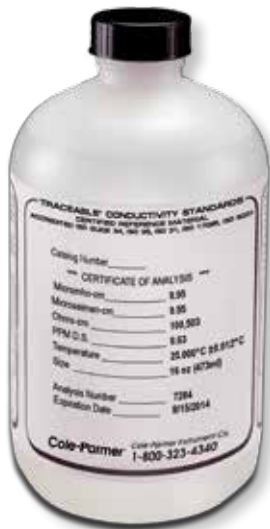
Cat. No.	Supplied
98766-24	53.3 cm metal arm, 20 cm diameter metal base, probe holder



### Traceable™ Certificate

To assure accuracy an individually-numbered Traceable™ Certificate which assures accuracy from an ISO/IEC 17025:2005 (1750.01) calibration laboratory accredited by A2LA. It indicates traceability of measurements to the SI units through NIST or other recognized national measurement institutes (NMI) that are signatories to the CIPM Mutual Recognition Agreement.

## Traceable Conductivity and pH Buffer Standards



### Traceable® Conductivity Standards (CRM)

Highest accuracy available assuring reliable results

- Certified Reference Material
- 100% compatible with all conductivity meters
- Each bottle or One-Shot™ is labelled indicating conductivity, resistivity and dissolved solids
- Accuracy at 25°C is ±0.25 microsiemens for 1, 5, 10 microsiemen solution or ±0.25% for other solutions or the uncertainty noted on the certificate
- Supplied: 16 ounce bottle, an individual temperature compensation chart, traceability information, Traceable® Certificate

**Methods supported**—This certified reference material meets test requirements for Federal, State, and local agencies, CAP, ASTM, NCCLS, CLSI, ACS, CLIA, AOAC, EPA, APHA, AWWA, WEF, USGS, USP, and ISO. Traceable® Certified Reference Material complies with and is essential for use in these official methods: AOAC 973.40, EPA 120.1, Standard Method 2510 (APHA, AWWA, WEF), ISO 7888, DIN 38404, ASTM D1125, USGS I-1780, USP 645, and for A2LA/NVLAP accreditations/ISO 9000 certifications.



### Traceable® One-Shot™ Conductivity Standards (CRM)

Calibration within disposable container eliminates contamination

- Certified Reference Material
- 100% compatible with all conductivity meters
- Accuracy: certificate stated uncertainty, or ±0.25 microsiemen or ±0.25%
- Supplied: 6-pack 100 ml container, step-by-step calibration instructions, individual temperature compensation charts, traceability information, Traceable® Certificate

## Traceable® Conductivity Standards, Certified Reference Materials

Cat. No. 16 oz. bottle ISO Guide 34	Cat. No. Individually Tested 16 oz. bottle ISO 17025	Cat. No. 100 ml One-Shot™ (6-pack) ISO Guide 34	Microsiemens/Micromhos	Megohms	TDS/PPM
00652-20	00652-40	—	1	1	0.66
00652-22	00652-42	00652-60	5	0.2	3.3
00652-24	00652-44	00652-62	10	0.1	6.6
00652-26	00652-46	00652-64	100	0.01	66
00652-28	00652-48	00652-66	1000	0.001	666
00652-30	00652-50	00652-68	1413	0.00071	933
00652-32	00652-52	00652-70	10000	0.0001	6666
00652-34	00652-54	00652-72	100000	0.00001	66666
00652-53	00652-56	00652-76	150000	0.000006	100000
00652-55	00652-58	00652-78	200000	0.000005	133333
—	—	00652-74	Assortment (one each of above One-Shot™, except 00652-60, 00652-76, 00652-78)		

**Traceable to NIST for accuracy**—To assure accuracy an individually serial-numbered Traceable® Certificate is supplied from manufacturer with both bottles and One-Shots™ to indicate traceability to standards provided by NIST (National Institute of Standards and Technology) and/or a National Standards Laboratory. A2LA accredited certification provides highest achievable level of quality assurance, documentation, and accuracy. Certified Reference Materials are produced by an A2LA accredited ISO Guide 34 (1750.02) certified reference material producer and by an A2LA accredited ISO/IEC 17025 (1750.01) calibration laboratory. Additional guidelines include ISO Guide 31 (certificate content), and ISO Guide 35 (statistical analysis), and ISO 9001 accreditations (certified quality manufacturer).

## Traceable® pH Buffer Standards (CRM)

The most accurate pH Standards available anywhere

- 100% compatible with all makes of instruments and electrodes
- Select values manufactured to IUPAC (International Union of Pure and Applied Chemistry) formulation—features long term buffer stability and buffer resistance to temperature changes during pH meter calibration
- Only Certified Reference Material meets all test requirements for Federal, State, and local agencies
- Triple-layered proprietary packaging—aluminium foil, PET and low-density polyethylene bag—prevents contamination by permeable gases and provides 2-year shelf life
- Each 473 ml ounce bottle or six pack single-use 100ml container is supplied with an individual temperature compensation chart, traceability information, Traceable® Certificate



### Traceable® pH Buffer Standards Certified Reference Material (CRM) (CLEAR)

Size	Accuracy	Cat. No.	pH Value
16 oz. bottle	25°C is $\pm 0.010$ pH	00655-40	4.005
		00655-42	7.000
		00655-46	7.416
		00655-44	10.012
100 ml One-Shot™ (6-pack)	25°C is $\pm 0.010$ pH	00655-30	4.005
		00655-32	7.000
		00655-36	7.416
		00655-34	10.012
One-Shot™ Assortment (6-pack)		98767-73	4.005 — 10.012

### Traceable® pH Buffer Standards Certified Reference Material (CRM) (COLOUR)

Size	Accuracy	Colour	Cat. No.	pH Value
16 oz. bottle	25°C is $\pm 0.010$ pH	Red	98767-74	4.005
		Yellow	98767-75	7.000
		Blue	98767-76	10.012
100 ml One-Shot™ (6-pack)	25°C is $\pm 0.010$ pH	Red	98767-77	4.005
		Yellow	98767-78	7.000
		Blue	98767-79	10.012
One-Shot™ Assortment (6-pack)		Red/Yellow/Blue	98767-80	4.005 — 10.012

## Redi-Stor™ Conductivity Probe Storage Solution

Eliminates probe contamination and preserves probe cleanliness

- Redi-Stor™ is ideal solution for storing conductivity probes
- It preserves probe's cleanliness, eliminates growths found when storing in water only, and maintains probe for immediate use with no conditioning
- Supplied: 16 ounce container, step-by-step calibration instructions

Cat. No.	Size
00652-80	473 ml. bottle



### Traceable™ Certificate

To assure accuracy an individually-numbered Traceable™ Certificate which assures accuracy from an ISO/IEC 17025:2005 (1750.01) calibration laboratory accredited by A2LA. It indicates traceability of measurements to the SI units through NIST or other recognized national measurement institutes (NMI) that are signatories to the CIPM Mutual Recognition Agreement.



## Traceable® Dissolved Oxygen Meter

Easy-use meter simultaneously displays O<sub>2</sub> concentration and temperature

- Instrument recalls highest, lowest and average readings at the touch of a button
- Output for exporting data
- Computer output allows connection to a computer or data logger for monitoring and keeping results
- Supplied: probe, 1 m cable, two replacement probe heads, electrolyte solution, battery, computer output, carrying case, Traceable® Certificate

Cat No.	Description	Range	Resolution	Accuracy
98767-10	Dissolved oxygen measurement	0.00 to 20.00 mg/L	0.1 mg/L	±0.4 mg/L
	DO measurement % air saturation	0.00 to 100%	0.1%	±0.7% mg/L
	Temperature measurement	0.0 to 60.0°C	0.1°	±1.5°F/0.8°C
	Automatic temperature compensation	mg/l mode: 0.0 to 60.0°C, % air mode: 0.0 to 60.0°C		
	Salinity compensation	0 to 39‰		
	Altitude compensation	0 to 3900 m		
<b>Accessories</b>				
19601-30	Data Acquisition System (for additional information, see page 66)			
19601-34	Easy-Use Accessory Adaptor 115 VAC (for international adaptor see page 79)			



## Traceable® Dissolved Oxygen Pen

Measures dissolved oxygen to 100% air saturation

- Compact design
- Easy-to-use, MIN/MAX readings
- Supplied: 2 replacement probe tips/membranes, electrolyte solution, carrying case, battery, Traceable® Certificate

Cat. No.	Description	Range	Resolution	Accuracy
19601-31	Dissolved oxygen measurement	0.00 to 20.00 mg/l	0.1 mg/l	±0.4 mg/l
	Oxygen measurement % air saturation	0.0 to 100% air saturation	0.1%	± 0.7% mg/l
	Temperature measurement	32.0 to 122°F (0.0 to 50.0°C)	0.1°	±1.5°F / 0.8°C
	Automatic temperature compensation	0.0 to 50.0°C		

## Traceable® Dual-Range Light Meter

Cable allows placing sensor anywhere

- Unit recalls highest, lowest, and average reading; and includes colour-correction filter
- Analogue output for strip and chart recorders (0.1 millivolts per digit)
- Supplied: 5 cm diameter photocell, 1 m cable, battery, recorder output, Traceable® Certificate



Cat. No.	Measurement	Range	Resolution	Accuracy
98766-92	Lux	0 to 1,999 lux	1 lux	±5% reading + 10 lux
		2000 to 19,999 lux	10 lux	±5% reading + 100 lux
		20,000 to 50,000 lux	100 lux	±5% reading + 100 lux
	Foot Candles	0 to 199.9 Fc	0.1 Fc	±5% reading + 1 Fc
		200 to 1,999 Fc	1 Fc	±5% reading + 10 Fc
		2,000 to 5,000 Fc	10 Fc	±5% reading + 100 Fc

<b>Accessories</b>				
19601-34	Easy-Use Accessory Adaptor 115 VAC (for international adaptor see page 79)			



## Traceable® Dual-Display Light Meter

Dual display shows lux or foot-candles, or percent differential from a reference point, and selected light source—daylight, tungsten, fluorescent or mercury

- Unit recalls highest, lowest and average readings; also includes a HOLD key to freeze the display
- Computer output allows connection to a computer or data logger for monitoring and keeping results
- Supplied: 5 cm dia. photo cell, 1 m cable length, battery, computer output, Traceable® Certificate

Cat. No.	Measurement	Range	Resolution	Accuracy
98766-93	Lux	0 to 1,999 lux	1 lux	±4.5% full scale
		2,000 to 19,999 lux	10 lux	
		20,000 to 50,000 lux	100 lux	
	Foot Candles	0 to 199.9 Fc	0.1 Fc	
		200 to 1,999 Fc	1 Fc	
		2,000 to 5,000 Fc	10 Fc	
<b>Accessories</b>				
19601-30	Data Acquisition System (for additional information see page 66)			
19601-34	Easy-Use Accessory Adaptor 115 VAC (for international adaptor see page 79)			



## Traceable® Ultraviolet Light Meter

Reads and records UV wavelengths at three different ranges

- Precise photo-diode, colour-correction filter
- Unit recalls highest, lowest and average readings; also includes a HOLD key to freeze display
- Computer output allows for connecting to a computer or data logger for monitoring and keeping results
- Supplied: 1.9 cm diameter photocell, 1 m cable, battery, computer output, carrying case, Traceable® Certificate

Cat. No.	Range	Resolution	Accuracy
98766-94	0 to 199.9 $\mu\text{W}/\text{cm}^2$	0.1 $\mu\text{W}/\text{cm}^2$	$\pm 4 \mu\text{W}/\text{cm}^2 + 1 \mu\text{W}/\text{cm}^2$
	200 to 1.999 $\text{mW}/\text{cm}^2$	0.001 $\text{mW}/\text{cm}^2$	$\pm 0.04 \text{mW}/\text{cm}^2 + 0.01 \text{mW}/\text{cm}^2$
	2.00 to 19.99 $\text{mW}/\text{cm}^2$	0.01 $\text{mW}/\text{cm}^2$	$\pm 0.4 \text{mW}/\text{cm}^2 + 0.1 \text{mW}/\text{cm}^2$
<b>Accessories</b>			
19601-30	Data Acquisition System (for additional information, see page 66)		
19601-34	Easy-Use Adaptor (for international adaptor see page 79)		



## Traceable® Sound Level Meter

Three decibel ranges for greater precision

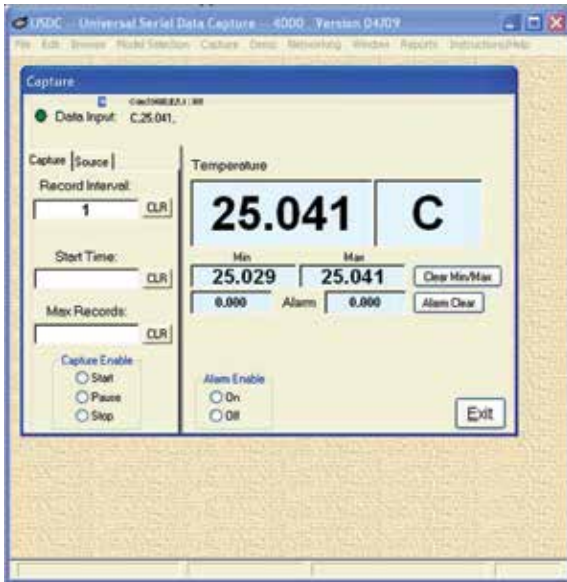
- Response time can be adjusted by user to fast (0.2 seconds) or slow (1.5 seconds)
- Memory date-hold function stores highest readings achieved for later display
- Fulfills OSHA requirements for sound monitoring
- Recorder jack for capturing AC and DC 10 mV/dB data
- Provides weightings for both A (frequencies from 500 to 10 kilohertz) and C (frequencies from 30 to 10 kilohertz) to meet IEC 651 Type-2 standards
- Supplied: battery, carrying case, Traceable® Certificate

Cat. No.	Range	Resolution	Accuracy	Response time
98767-13	low (35.0 to 80.0 dB)	0.1 dB	±2dB	fast (0.2 seconds) slow (1.5 seconds)
	medium (50.0 to 100.0 dB)			
	high (80.0 to 130.0 dB)			



### Traceable™ Certificate

To assure accuracy an individually-numbered Traceable™ Certificate which assures accuracy from an ISO/IEC 17025:2005 (1750.01) calibration laboratory accredited by A2LA. It indicates traceability of measurements to the SI units through NIST or other recognized national measurement institutes (NMI) that are signatories to the CIPM Mutual Recognition Agreement.



## Computer Data Acquisition System with USB Cable

Easily keeps track of results for thermometers, hygrometers, barometers, light meters, anemometers, manometers, dissolved oxygen, conductivity and more

- Allows up to eight unique Traceable® meters to simultaneously capture data and send it directly to email to any smartphone or computer
- Readings are saved to a file that can be viewed, printed as-is, or merged in a report or spreadsheet format
- Data continues to be collected in background even when user works on other software programs
- 24/7 audible/visual alarm reminds user to check on data
- Supplied: Windows CD, 1.8 metre cable—USB, serial, meter connections

Data Acquisition System Cat. No.	Product Description	Page No.	Product Cat. No.
19601-30	Traceable® Pressure/Vacuum Gauge	58	3466/3469
19601-30	Traceable® Dual-Display Light Meter	65	98766-93
19601-30	Traceable® Ultraviolet Light Meter	65	98766-94
37950-70	Traceable® Manometer/Pressure/Vacuum Gauges	58	98766-97/ / 98767-00
90080-21	Traceable® Digital Thermometer	17	90080-09
90080-21	Traceable® Humidity/Temperature/Dew Point Meter	51	03313-65 / 03313-66
19601-30	Traceable® RTD Platinum Thermometer	23	37803-92
19601-30	Traceable® Double Thermometer	28	91210-03
19601-30	Traceable® Dual-Display Conductivity Meter	60	19601-08
19601-30	Traceable® Humidity/Thermometer	52	90080-04
19601-30	Traceable® Dissolved Oxygen Meter	64	98767-10
19601-30	Traceable® Hot Wire Anemometer/Thermometer	56	98767-11
37950-70	Traceable® Expanded Range Conductivity Meter	60	19601-03
37950-70	Traceable® Memory Hygrometer/Thermometer	52	37950-02

## Traceable® Digital Laser Tachometer

Use this high accuracy tachometer to read speeds of centrifuges, motors, and stirrers

- Touchless, no contact operation is safe and easy
- Laser pin-point accuracy anywhere from five centimetres to almost two metres away from any rotating object
- Supplied: batteries, self-adhesive reflecting tabs, internal light, carrying case, Traceable® Certificate

Cat. No.	Range	Resolution	Accuracy
98767-04	10 to 99,999 RPM	0.1 below 1000, and 1 above	±1 RPM or 0.05%



## Traceable® Touchless/Contact Digital Tachometer

Unique memory feature permits recalling highest, lowest and last reading

- Takes only 3 seconds for most readings
- Includes contact readings with a rotating spindle as well as touchless operation
- Supplied: batteries, self-adhesive reflecting tabs, internal light, cone for RPM, wheel of surface speeds, carrying case, Traceable® Certificate

Cat. No.	Range	Resolution	Accuracy
98767-03	0 to 999.9 RPM	0.1 RPM	±0.05% of reading + 0.1 RPM
	1000.00 to 99999 RPM	1 RPM	±0.05% reading + 1 RPM



## Traceable® Tachometer with Red LED Pointer

LED allows proper alignment for measurement

- Simple, touchless operation provides accurate readings in 2 seconds
- Optical no-contact measurements
- Supplied: battery, Traceable® Certificate

Cat. No.	Range	Resolution	Accuracy
98767-08	10 to 99.99 RPM	0.001 RPM	±0.04% of reading + 0.02 RPM
	100.00 to 999.99 RPM	0.01 RPM	±0.04% of reading + 0.2 RPM
	1000.00 to 9999.99 RPM	0.1 RPM	±0.04% of reading + 2 RPM
	10000 to 99999 RPM	1 RPM	±0.04% of reading + 22 RPM



## Traceable® Tachometer Touch

Lightweight and portable

- Any rotating surface may be touched by the cone convex tip, funnel concave tip or speed wheel for instant results
- Designed to measure centrifuges, pumps, rollers, shafts, gears, motors, and moving surfaces
- Short sampling time provides answers in two seconds
- Low battery condition is indicated on the display
- Supplied: battery, Traceable® Certificate

Cat. No.	Range	Resolution	Accuracy
98767-07	0 to 99.999 RPM	0.001 RPM	±0.04% reading + 0.01 RPM
	100.00 to 999.99 RPM	0.01 RPM	±0.04% reading + 0.1 RPM
	1000.0 to 9999.9 RPM	0.1 RPM	±0.04% reading + 1 RPM
	10000 to 99999 RPM	1 RPM	±0.04% reading + 10 RPM



### Traceable™ Certificate

To assure accuracy an individually-numbered Traceable™ Certificate which assures accuracy from an ISO/IEC 17025:2005 (1750.01) calibration laboratory accredited by A2LA. It indicates traceability of measurements to the SI units through NIST or other recognized national measurement institutes (NMI) that are signatories to the CIPM Mutual Recognition Agreement.



## Traceable® Battery Tester

Checks alkaline, carbon, silver-oxide, mercury, nickel-cadmium and other batteries

- Simple colour-coded scale immediately indicates battery conditions
- Provides true resistive load readings—real world usage; tests under actual operating conditions
- Gold-plated printed circuit board and silver-plated switches ensure accuracy and long life
- Supplied: 70 cm cable, test leads, Traceable® Certificate

Cat No.	Range	Number of ranges	Accuracy
98766-95	1.35 to 12 volts	13	±5%



## Traceable® Digital Auto-Range Multimeter

Designed specifically for checking electrical functions of scientific equipment in labs

- Features an audible beep for checking continuity, ensuring instant detection of shorts/opens in probes, cables, or circuit boards
- Supplied: Traceable Certificate®, case, batteries, needle probes, alligator clips

Cat No.	Range	Accuracy
98766-91	1 millivolt to 400 volts; AC/DC; 0.1 to 2,000,000 ohms	2 units, or 2% of the reading



## Variable-Speed Peristaltic Tubing Pump

Compact, variable-flow, bi-directional pump offers adjustable flow delivery

- Ideal for use with conductivity flow-thru cells, liquid chromatography, collecting fractions, pH/circulating fluids or buffers in baths, and moving corrosive materials
- Five different tubing sizes provide fine resolution with a wide flow range; revolution of one roller delivers a precisely measured volume specific to the tubing size and motor speed
- Fluid contacts only tubing for contamination-free pumping
- Tubing may be used with fluid temperatures from –80 to 500°F (–62 to 260°C)
- Pump has a purge/prime switch for high-speed emptying/filling, reverses at touch of a switch
- Supplied: silicone tubing, polypropylene fittings/nipples, AC adaptor, accessory battery connector

Cat No.	Flow rate range
73160-30	0.005 to 1.8 ml/minute
73160-31	0.03 to 8.20 ml/minute
73160-32	0.4 to 85.0 ml/minute
73160-33	4.0 to 600 ml/minute



## Variable-Flow Chemical Transfer Pump

Designed for pulseless fluid transfer at variable flow rates

- Pumps fluids with a viscosity to 200 centipoises
- May be used with fluid temperatures from –40 to 200°F (–40 to 93°C)
- Pump has a purge/prime switch for emptying/filling; also reverses for ease in draining tubing
- Barbed inlet/outlet ports use any type of tubing with an inside diameter of 4.75 mm
- Chemical-resistant, wetted parts are Dupont Delrin®, 304 stainless-steel, Viton®, and Dupont Teflon®
- May be used with up to 36 metres of tubing for remote sampling
- Supplied: 115 VAC UL-rated wall power supply

Cat No.	Flow rate range
73160-40	4.25 ounces to 0.625 gallon (120 to 2,250 ml) per min

## Hose/Tubing Clamps

### For use with all types of rubber and plastic tubing

- Made of chemical/corrosion-resistant, non-conducting nylon
- One-piece, reusable clamp squeezes shut for a leak proof seal pressing the side releases the clamp
- May be chemically or gas-sterilized for biomedical or food applications
- Use within temperature range: 32 to 194°F (0 to 90°C)



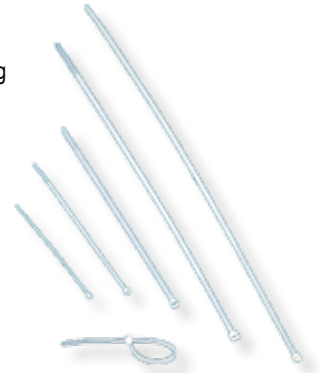
Cat. No.	Quantity	Inside Clamp Diameter
98766-31	100/pk	6.25 to 7.37 mm
98766-32	100/pk	9.14 to 10.31 mm
98766-33	100/pk	10.41 to 11.89 mm
98766-34	100/pk	12.07 to 13.61 mm
98766-35	100/pk	13.67 to 15.44 mm
98766-36	100/pk	15.16 to 16.89 mm
98766-37	100/pk	17.02 to 19.81 mm
98766-38	100/pk	18.54 to 21.08 mm
98766-39	100/pk	22.10 to 24.77 mm
98766-40	100/pk	24.21 to 27.76 mm
98766-41	100/pk	26.21 to 30.15 mm
98766-42	65/pk (assortment)	6.25 to 40.90 mm

## Tight-Ties™

### Self-locking ties made of chemical-resistant Nylon™

- Works with all types of plastic/rubber tubing
- Tensile strength is 5 to 22.6 kg
- Unique tapered tips for fast inserting and tightening
- Use within temperature range: -40 to 85°C

Cat. No.	Quantity	Overall Length
98766-43	400/pk assortment	101.6 to 355.6 mm
98766-44	100/pk	101.6 mm
98766-45	100/pk	142.88 mm
98766-46	100/pk	203.2 mm
98766-47	100/pk	279.4 mm
98766-48	100/pk	355.6 mm

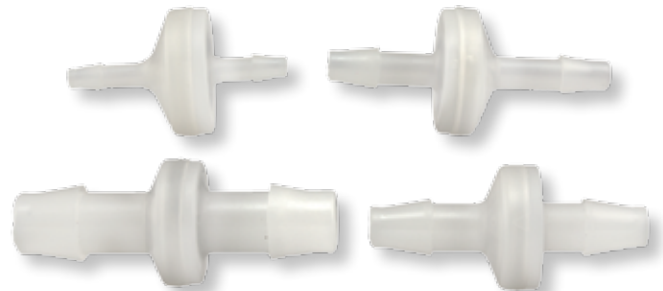


## Standard Check Valves

### Made of zero maintenance, chemical resistant Kynar®/Viton®

- Prevents damage to equipment, pumps, and flow systems by preventing back flow; may be autoclaved
- Use with acids, bases, water, chemical processing, alcohols
- Use for liquids, gases, pressure, vacuum applications
- Operating ranges are 0 to 50 PSI and -40 to 126°C

Cat. No.	Quantity	Overall Size	Use Tubing I.D size
98766-49	6/pk	31.75 mm	3.18 mm
98766-50			4.75 mm
98766-51			6.35 mm
98766-52			9.5 mm



## Ultrasonic Automatic Measuring Meter

### Measure any space without needing a tape measure

- Simply point and shoot to measure distance, area, and volume
- One-key operation automatically performs length, area, or volume calculations
- Memory permits computing areas and volumes from stored measurements
- Supplied: battery, carrying case

Cat. No.	Range	Resolution	Accuracy
98766-96	2 to 50 feet (0.61 to 15.24 metres)	1" and 0.01 meters	1% ±1 digit





## Traceable® Digital Callipers

### Ideal for measuring inside diameter, outside diameter and depth

- Designed for laboratory use, measures in inches and millimetres
- Zero button instantly sets unit to zero when jaws are at any position—permits, without calculations, setting a Floating Zero™ or reference point to read “greater than or less than results with a minus sign displayed”
- No lubrication is ever required on the ultra-smooth slide bar, runs on the supplied battery for 10,000 hours
- Supplied: carrying case, battery, Traceable® Certificate

Cat. No.	97152-18	97152-19	97152-16	97152-17
Material	Stainless-steel		Carbon Fiber	
Measuring range	6"/150mm	8"/200mm	4"/100mm	6"/150mm
Resolution	0.0005 inch/0.01mm		0.01 inch/0.1mm	
Accuracy	±0.001" or ±0.03mm		±0.01" or ±0.2mm	
Depth Bar	Yes		No	
Thumb roller/Lock screw	Yes		No	
Non-metallic/non-conductive	No		Yes	
Dimensions	23 x 7.6 cm	28 x 7.6 cm	17.8 x 6.4 cm	24.1 x 7.6 cm
Weight	141.75 g	170 g	28.3 g	56.7 g



## Traceable® SpatulaBalance™

### Unique spatula both scoops material and displays weight

- Three position soft-touch keys in the handle tares (sets to zero), holds (freezes display) and changes grams to ounces
- Scoop detaches from balance for dishwasher-safe cleaning
- LCD indicates low battery
- Markings on see-through scoop are graduated from 5 to 30 millilitres in 5 millilitre increments for weighing liquids with ease
- Supplied: batteries, detachable scoop, Traceable® Certificate

Cat. No.	Range	Resolution	Accuracy	Scoop capacity
01019-11	0 to 300.0 g (0 to 10.580 oz)	0.1 g (0.005 oz)	±0.2 g or ±0.25%	30 ml/1.1 fl. oz (vol: 32 cm <sup>3</sup> /1.95 inch <sup>3</sup> )

#### Accessories

98768-01	Accessory scoop, 40 ml
----------	------------------------



## Ultra-Clean™ Supreme Aluminium Foil

### Pure aluminium foil is manufactured specifically for lab

- Foil is impermeable to light, oxygen, and water
- Premium grade foil eliminates problems caused by thinner foils
- 100% recyclable

Cat. No.	Type	Dimensions	Thickness	Unit Package	Case qty
98766-69	roll	12" x 25'	regular	each	12 each
98766-70	roll	12" x 75'	regular	each	12 each
98766-71	roll	12" x 200'	regular	each	12 each
98766-72	roll	18" x 25'	heavy-duty	each	12 each
98766-73	roll	18" x 50'	heavy-duty	each	12 each
98766-74	roll	18" x 25'	extra heavy-duty	each	12 each
98766-75	pop-ups	9" x 10 <sup>3</sup> / <sub>4</sub> "	regular	200 sheets	12 each

## Clean-Wipes™

### Universal clean-up tool

- Strong, lint-free, non-woven soft cloths will not scratch surfaces
- Pre-moistened Clean Wipes™ clean even the dirtiest parts
- Ideal for wiping optical parts, microscopes and lenses
- Ability to choose solution of choice with Dry Clean Wipes™—simply add 29.5 ml to canister
- Individually dispensed, reclosable container, snap-on sealed top eliminates contamination, dust, and dirt

Cat. No.	Liquid Solution	Quantity/canister
33675-03	70% reagent-grade isopropyl alcohol and 30% reagent-grade deionized water	100 wipes
33675-05	100% pure reagent-grade deionized water	100 wipes
33675-07	Dry—user adds any solution	100 wipes

## Optic™ Glass Wipes

### Made of lint-free microfibre cloth

- Non-woven, lint-free cloth is pre-moistened with a unique formulation—easily removes oil, grease and lint
- Designed specifically for wiping goggles, eyeglasses, lenses, microscopes and fume hood windows
- Individually dispensed, wipes are handy and ready for instant use

Cat. No.	Size	Quantity/canister
86476-50	15 x 22.9 cm wipes	100 wipes

## Cheesecloth Wipes

### Ideal for wiping cuvettes, microscopes, glassware, syringes, pipettes and pH electrodes

- Meets all cleanliness specifications of USP (United States Pharmacopoeia) and Federal Specification CCC-G-101c
- Pure wipes absorb 6 times their weight of solvents and aqueous solutions
- Certified to be 100% pure cotton of reagent-grade quality and purity
- Can be used as a filtering material due to their inertness to harsh solvent

Cat. No.	Size	Quantity
33670-15	10 cm-square pad (8-ply) unfolds to approximately 17.8 x 35.5 cm	200/box
33670-16	1 metre wide	100-yard bolt

## Adjustable Spray Wash Bottles

### Convenient double headed design—adjustable spray nozzle

- Instant-off trigger release eliminates messy drips
- Chemical-resistant and virtually unbreakable bottles are made of high-density polyethylene (HDPE), sprayer is made of polypropylene
- Bottles may be gas or chemically sterilized, dishwasher safe
- Double-headed feature (Cat. No. 3340) eliminates removing a dripping pump and allows refilling in seconds through a separate opening

Cat. No.	Features	Volume	Quantity
98766-55	Double-headed	1000 ml	1
98766-56	Adjustable spray nozzle	240 ml	3/pack

### Traceable™ Certificate

To assure accuracy an individually-numbered Traceable™ Certificate which assures accuracy from an ISO/IEC 17025:2005 (1750.01) calibration laboratory accredited by A2LA. It indicates traceability of measurements to the SI units through NIST or other recognized national measurement institutes (NMI) that are signatories to the CIPM Mutual Recognition Agreement.



98766-55



98766-56



07193-11

## Humidity Sponge™

**Turns any container into a desiccator**

- Non toxic desiccant—perfect for drugs, food, electronics, optics, and equipment
- Bags are guaranteed to retain 16% moisture by weight, typical results are 37% moisture absorption
- Desiccant meets US FDA requirements—certified ISO Class 5 (Class M3.5) cleanroom-compatible
- Indicator Sponge shows when moisture capacity has been reached

Cat. No.	Description	Size	Quantity
07193-11	Humidity Sponge™ Regenerable	76.2 x 76.2 x 6.4 mm	40/pack
07193-11	Humidity Sponge™ Indicator	76.2 x 76.2 x 6.4 mm	40/pack



06525-02

06525-08

## Desi-Vac™ Vacuum Pump Containers

**Achieves a vacuum of better than 5 metres of water with built-in pump**

- Ideal for drying, preserving, storing and even shipping sample
- Vacuum pump built into the top removes air with manual strokes
- Release key on top allows air into the container to remove lid

Cat. No.	Size	Volume
06525-02	11.4 x 12.7 cm	700 cc
06525-08	12.7 x 18.4 cm	1500 cc



84551-01

84551-07

84551-05

84551-03

## Anti-Static Static-Away™ Brushes

**Eliminates possibility that static will damage sensitive lab work**

- Washable, natural hair and synthetic conductive fibres simply remove static as it cleans
- Ideal for cleaning film, slides, optics, cuvettes, microscopes, electronics, monitors
- Brushes allow access to difficult places and eliminate touching critical equipment

Cat. No.	Brush width	Handle length
84551-01	6.4 cm	3.8 cm
84551-03	2.5 cm	12.7 cm
84551-05	5 cm	12.7 cm
84551-07	7.6 cm	15.2 cm



## Dust'it™ Blower

**Environmentally friendly—no aerosols**

- Powerful bulb duster forcibly blows away dust, lint and dirt by providing high-pressure jets of air exactly where desired
- One-way inlet valve at top stops air/dust from being drawn through tip
- Non-conductive plastic sleeve-tip prevents scratches and permits cleaning optical lenses, slides, circuit boards, cuvettes

Cat. No.	Description
17766-14	Dust'it™ Blower 3/pack



## Laser Pointer

### Powerful laser that clips to a notebook or lab coat pocket

- Perfect for slide presentations, detailed scientific discussions, microscope projections, field studies
- Highly visible 630-680 nm wavelength red light has 3.5 mm beam diameter
- Laser Class IIA has an output power of 5 mW and a range of over 91 metres

Cat. No.	Supplied
98766-28	battery, pocket clip

## Laser Key-Chain

### Key-chain makes it easy to carry anywhere

- Laser is designed specifically for slide presentations, wall charts, field use
- Pointer's brilliance works equally well in daylight or dark
- Output is 4 mW with a range of 122 metres

Cat. No.	Supplied
98766-30	battery, key-chain

## Key-Chain Micro-Laser Pointer

### Laser is perfect for slide presentations, wall charts and lectures

- Laser range is 92 metres
- Brilliant red light at highly visible 650 nm wavelength with a beam diameter of 3.5 mm

Cat. No.	Supplied
98766-29	battery, key-chain

## Glassware Rescuer™

### Half-round/half-flat shape smooths jagged edges

- Saves glassware, recovers beakers, and preserves flasks with handy industrial diamond file
- Makes glassware safe for use
- Size: 0.6 cm file diameter, 10.2 cm file length, 20.3 cm overall

Cat. No.	Features
98766-53	Non-skid, faceted handle is easy to hold

## Liquid Alarm

### Inexpensive guard for your valuable experiments and samples

- Loud alarm sounds for 30 hours when spills and overflows occur
- For detection when drums, tanks or flasks are close to overflowing
- Perfect reminder for an unattended filling container
- Red LED flashes

Cat. No.	Supplied
43301-15	battery, 3 metre cable





## Micro Probes, 6-pack

### Hand-honed to needle sharpness

- For manipulation of micro work, inspecting, microscopes, gluing
- Handles are non-slip and ergonomically designed

Cat. No.	Supplied
09254-10	6 each microprobes (stainless-steel)



## Micro Spatulas, 4-pack

### Small yet mighty flat-ended stainless-steel blades

- Four sizes: 0.1, 0.3, 0.5, 1.0 mm
- Overall length is 6 cm

Cat. No.	Supplied
06369-40	4 each micro spatulas (stainless-steel)



## Labtool II™

### Fourteen tools for hundreds of uses

- Features: pliers/gripper, wire stripper, wire cutter, ruler, small knife, large knife, serrated knife, punch, flat head screwdriver, Phillips screwdriver, bottle opener, needle, saw, and serrated stripper
- Size: 8.9 cm long when closed, weight: 198.4 g

Cat. No.	Supplied
97110-30	labtool, carrying case



## Mini-Labtool™ with Key-Chain

### Tool chest on a key-chain

- Features: pliers/gripper, wire stripper, wire cutter, knife, flat head screwdriver, Phillips screwdriver, scissors, file, saw, bottle opener, can opener, and key-chain
- Unit measures just 6.4 cm when closed, weight: 85 g

Cat. No.	Supplied
97110-31	labtool, carrying case, key-chain



## Write-On™ Aluminium Tags

### Features a soft centre that takes messages on both sides

- Extremely durable and suited for use in moist environments within the range of -40 to 300°F (-40 to 148°C)
- Can be written on the ordinary ballpoint pen
- Handy size of 8 x 2.5 cm makes it ideal for tagging valves, tubing, samples, and cylinders

Cat. No.	Supplied
98766-23	48 tags, wires

## Permanent Marking Pen Assortment

**No-smear pens can write on almost anything—perfect for marking samples**

- Perfect for marking lab samples, microscope slides, photographic slides, glass and plastic beakers, and plastic sample bags
- Permanent ink dries quickly and is waterproof and fade proof
- Writes on all surfaces including glass, film, wood, plastic, metal, rubber, and porcelain

Cat. No.	Colour and Quantity	Line width
09965-00	6 black, 2 red, 2 blue, 2 green	0.3 mm
09965-10	Black 6/pack	
09965-20	Red 6/pack	
09965-30	Blue 6/pack	
09965-40	Green 6/pack	



## Scientific Technical Pen Assortment

**Precision pens are perfectly balanced**

- Smooth-flowing, fade-proof ink is patented formulation
- Available in narrow 0.2mm lines for sharp, precise and clear writing
- Instant-drying ink eliminates smearing and bleeding

Cat. No.	Quantity	Line width	Colour	Cat. No.	Quantity	Line width	Colour
98766-15	6	0.2mm	Black	98766-14	3	0.2mm	Black
98766-16	6	0.4mm	Black		3	0.4mm	Black
98766-17	6	0.2mm	Red		1	0.2mm	Red
98766-18	6	0.4mm	Red		1	0.4mm	Red
98766-19	6	0.2mm	Blue		1	0.2mm	Blue
98766-20	6	0.4mm	Blue		1	0.4mm	Blue
98766-21	6	0.2mm	Green		1	0.2mm	Green
98766-22	6	0.4mm	Green		1	0.4mm	Green



## Lab Label Maker™

**Quickly/easily makes labels for chemicals, bottles, shelves, lab equipment**

- Self-adhesive coloured tape sticks to glass, plastic, metal, rubber, or wood
- Raised white letters on 9.5 mm wide tape are readable from 2.4 metres

Cat. No.	Description	Size
65543-42	Lab Label Maker™ (supplied: 2 (red & blue) rolls of Label Tape)	—
<b>Accessories</b>		
65543-44	Lab Label Tape™ Black, 4 roll/pk	9.5 x 3000 mm
65543-46	Lab Label Tape™ Red, 4 roll/pk	9.5 x 3000 mm
65543-48	Lab Label Tape™ Blue, 4 roll/pk	9.5 x 3000 mm
65543-50	Lab Label Tape™ Green, 4 roll/pk	9.5 x 3000 mm



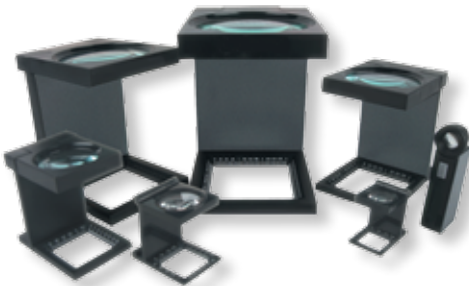


## Magnifier Lamp (2x)

### Sliding shutter cover provides lens protection when not in use

- Useful in inspection, electronics, quality control, sample examination, and biological analysis
- Brilliant LED light closely resembles daylight for optimal colour detection and clarity
- Large viewing area (10 x 6.4 cm) is easy to read and arm extension is 78.7 cm
- Clamps vertically or horizontally to top or side of any edge

Cat. No.	Magnification	Features
98766-61	2X	supplied with clamp to affix to any bench or table



## Hands-Free™ Fold-up Magnifiers

### Ruler markings in both inches and millimetres assist with measuring

- All glass optics assure perfect focus with zero distortion
- Designed specifically for use in quality control, labs, food, electronics, manufacturing
- Hands-Free™ Magnifiers allow two-handed examination of objects
- Folds up for compact storage

Cat. No.	Magnification	Lens Diameter	Lighted	Replacement Battery
98766-62	2.5 X	11.11 cm	YES	1111, 4 each
98766-63	2.5 X	8.9 cm	YES	1111, 4 each
98766-64	3.0 X	7.6 cm	NO	n/a
98766-65	3.5 X	5 cm	NO	n/a
98766-66	5.0 X	3.2 cm	NO	n/a
98766-67	7.0 X	2.2 cm	NO	n/a
98766-68	10.0 X	1.3 cm	YES	1105, 2 each



98766-59

98766-60

## Illuminated Microscope

### View slides at any site with a large viewing area

- Hand-held unit is perfect for inspection, quality control, field use, clinical observation, cloth/paper examination, and plant studies
- View slides in field with snap-on attachment
- Adjustable light source directs the bulb onto the exact area being examined
- Adjustable focus control knob allows for crisp viewing
- Supplied: battery, vinyl supply case (model 3356 only)

Cat. No.	Magnification	Features	Size/Weight
98766-59	60X to 100X	illuminated, snap-on slide holder	13.9 x 3.8 x 2.2 cm, 28.3 g
98766-60	30X	illuminated	13.9 x 3.8 x 2.2 cm, 28.3 g



98766-57

98766-58

## Illuminated Magnifiers

### Powerful lighted magnifiers provide perfect-focus and defined view of surface details

- Features state-of-the-art LED lamps and provide evenly-distributed light over surface being observed
- Low-power consumption and high-efficiency lamps improve battery life and performance

Cat. No.	Magnification	Magnifying lens size	Features
98766-57	2X with 4X spot	7.6 cm diameter	illuminated, hand-held
98766-58	4X	4.5 cm diameter	illuminated, hand-held

## Counter-Pen™

### The ideal cell growth colony counter

- Combination marker and digital counter designed for the lab and plant
- Sound and count occur simultaneously when black mark is made with felt-tipped pen
- Essential for counting cell growth on petri dishes, inventory parts, and tally samples received
- Pen marks hold place if interrupted and counter holds total
- Supplied: replaceable pen, cap, battery

Cat. No.	Counting quantity	Size
20610-30	99,999	152 x 16.7 mm



## Digital Counter with Key-Chain/Wrist-Strap

### Designed for easy-use and fail-safe counting

- ABS plastic construction with water-resistant seal
- Carry anywhere

Cat. No.	Counting quantity	Size	Supplied
20610-35	99,999	4.8 x 1.3 cm, weight is less than 28 g	metal clip, wrist-strap, battery



## Hand Tally Counter

### Counting made easy

- Numbers instantly and automatically return to zero with a twist of the reset knob
- Protective window seals out dust, dirt and humidity
- Corrosion-proof stainless-steel for long-life

Cat. No.	Counting quantity	Supplied
20610-00	9,999	loop for lanyard



## Big-Digit Solar-Powered Calculator

### Environmentally friendly, never again buy a battery

- Performs all arithmetic operations (add, subtract, multiply, divide), and features memory, percent, and floating decimal point
- Large digits allow effortless readings
- Supplied: solar-panel, battery, protective case design

Cat. No.	Functions
17300-14	add, subtract, multiply, divide, memory, percent, and floating decimal point





## 12 Digit Computer

### Calculator displays the entire answer to 12 digits

- Oversized, raised keys and jumbo digits make it easy on fingers and eyes
- Twelve digits end rounding errors and confusing scientific notation
- Supplied: solar panel, battery

Cat. No.	Functions
98766-81	arithmetic calculation, percent, memory, floating decimal, ratios, and grand totals



## Metric Converter

### Change lab measurements to US or metric in an instant

- Fast and convenient
- Provides fast and accurate answers for 126 metric conversions
- Supplied: battery, automatic flip-open LCD cover, bench top stand

Cat. No.	Functions	Size
98766-00	converts: length, area, volume, weight, liquid, energy, and temperature	7.6 x 9.5 x 1.27 cm, weight: 56.7 g



## Scientific Calculator

### Performs over 50 scientific functions

- Scientific calculator performs 99% of lab's routine and not-so-routine calculations
- Three-key memory and forever-memory store data when the unit is off
- Supplied: solar-panel, battery, protective case design

Cat. No.	Functions
17300-16	memory, roots, logs, trigs, hex; statistical: standard deviation, mean, sum of squares, sum of data



## Solar Desktop Calculator

### Solar-powered unit can be read in any light

- Large 8 or 12-digit easy-to-read display is angled to eliminate reflected glare
- Supplied: solar-panel, battery

Cat. No.	Digits	Functions
98766-82	8	add, subtract, multiply, divide, percent, 3-key memory, square root, floating decimal point
98766-82	12	add, subtract, multiply, divide, percent, 3-key memory, square root, floating decimal point

## Clear Plastic Lab Wrap

Ultra-clean film ensures sample purity and eliminates contamination

- Low tangle, high cling, ultra-clean film designed for lab
- Metal tear-off bar for ease in achieving exact size needed
- Unique flaps prevent roll from leaving box



Cat. No.	Dimensions
06276-02	30.5 cm wide x 30 metres long

## Flexible-Arm™ Light

Lamp moves in all directions and places light exactly where needed

- Beam closely resembles daylight for correct colour detection
- Designed specifically to reduce distortion, increase contrast, and give visual clarity up to 40% greater than typical lamps

Cat. No.	Arm Length	Supplied	Weight
98766-25	50.8 cm	35-watt soft-white Halogen light, 3.2 kg, 17.8 cm base, white reflector,	3.6 kg
98766-26	78.7 cm		



## Accessories

Cat. No.	Description	Use with Cat. No.	Product Page No.
19601-22	Accessory Battery Eliminator, Adaptor 115 VAC/60 Hz adaptor for use when battery operation is not possible.	19601-06	59
19601-34	Easy-Use Accessory Adaptor 115 VAC adaptor for use when battery operation is not possible.	98766-92	64
		98766-93	65
		98766-94	65
		37803-92	23
		19601-08	58
98767-10	62		
35612-90	33% Calibration Standard with calibration instructions	37950-01 / 37950-02	49
35612-91	75% Calibration Standard with calibration instructions	37950-01 / 37950-02	49
37803-50	Replacement Printing Paper (pack of 2 rolls)	37803-89	40/49



 **Cole-Parmer**<sup>®</sup>  
*scientific experts*

T: +44 (0)1480 272279  
info@coleparmer.co.uk  
www.coleparmer.com

Visit [coleparmer.com](http://coleparmer.com)